



[Go to Product page](#)

Datasheet for ABIN7013927
anti-GRAP2 antibody (APC)

2 Images

Overview

Quantity:	0.1 mg
Target:	GRAP2
Reactivity:	Human
Host:	Mouse
Clonality:	Monoclonal
Conjugate:	This GRAP2 antibody is conjugated to APC
Application:	Flow Cytometry (FACS)

Product Details

Immunogen:	GST-fusion human GRAP2/GADS protein
Clone:	UW40
Isotype:	IgG2a
Specificity:	The mouse monoclonal antibody UW40 recognizes GRAP2/GADS, a 41 kDa cytoplasmic adaptor protein that plays a pivotal role during the early events of signal transduction in T cells.
Purification:	Purified antibody is conjugated with activated allophycocyanin (APC) under optimum conditions and unconjugated antibody and free fluorochrome are removed by size-exclusion chromatography.

Target Details

Target:	GRAP2
Alternative Name:	GRAP2 (GRAP2 Products)

Target Details

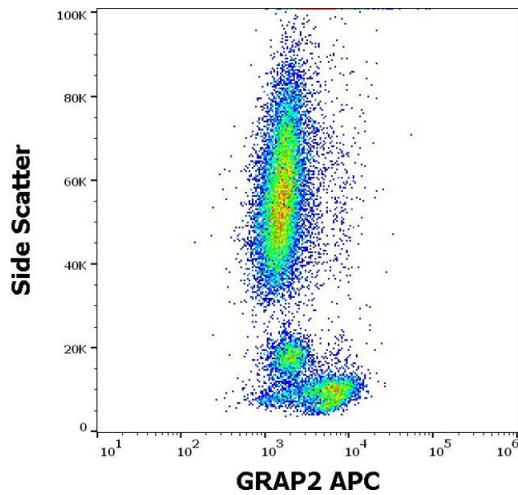
Background:	GRB2 related adaptor protein 2,GRAP2/GADS (Grb2-related adaptor protein 2 / Grb2-related adaptor downstream of Shc) is a cytoplasmic adaptor protein containing N- and C-terminal SH3 domains flanking a central SH2 domain and a proline/glutamine-rich region. It is expressed predominantly in lymphoid tissue and hematopoietic cells, particularly in T cells. GRAP2/GADS plays a pivotal role during the early events of T cell signal transduction by recruiting the adaptor protein SLP-76 and its associated molecules, such as Vav, Nck, Itk, and ADAP, to the transmembrane adaptor protein LAT. GRAP2/GADS also binds several other signaling proteins, namely Gab2, HPK1 (hematopoietic progenitor kinase 1), and Cbl. Unlike similar adaptor protein Grb2, GRAP2/GADS shows higher selectivity when binding to the particular phosphorylated tyrosines of LAT adaptor.,GADS, GRID, GRAP-2, GrbX
Gene ID:	9402
UniProt:	075791
Pathways:	TCR Signaling , Fc-epsilon Receptor Signaling Pathway

Application Details

Application Notes:	Flow cytometry: Recommended dilution: 1-4 µg/mL. Intracellular staining.
Restrictions:	For Research Use only

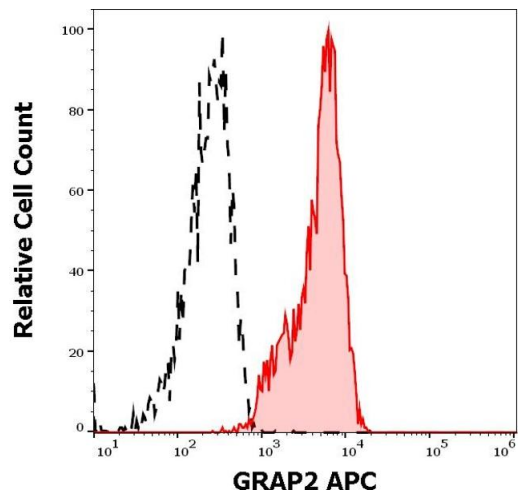
Handling

Concentration:	0.1 mg/mL
Buffer:	Stabilizing phosphate buffered saline (PBS), pH 7.4, 15 mM sodium azide
Preservative:	Sodium azide
Precaution of Use:	This product contains Sodium azide: a POISONOUS AND HAZARDOUS SUBSTANCE which should be handled by trained staff only.
Storage:	4 °C
Storage Comment:	Store at 2-8°C. Protect from prolonged exposure to light. Do not freeze.



Flow Cytometry

Image 1. Flow cytometry intracellular staining pattern of human peripheral whole blood stained using anti-human GRAP2(UW40) APC antibody (concentration in sample 1,7 μ g/mL).



Flow Cytometry

Image 2. Separation of lymphocytes stained using anti-human GRAP2 (UW40) APC antibody (concentration in sample 1,7 μ g/mL, red-filled) from lymphocytes stained using mouse IgG2a isotype control (MOPC-173) APC antibody (concentration in sample 1,7 μ g/mL, same as GRAP2 APC concentration, black-dashed) in flow cytometry analysis (intracellular staining) of peripheral blood.