

Datasheet for ABIN7013938  
**anti-CD8B antibody (PE)**[Go to Product page](#)

## 2 Images

## Overview

Quantity:	0.1 mg
Target:	CD8B
Reactivity:	Mouse
Host:	Rat
Clonality:	Monoclonal
Conjugate:	This CD8B antibody is conjugated to PE
Application:	Flow Cytometry (FACS)

## Product Details

Immunogen:	Mouse CD8b
Clone:	H35-17-2
Isotype:	IgG2b kappa
Specificity:	The rat monoclonal antibody H35-17.2 recognizes an extracellular epitope of mouse CD8b, the 32-34 kDa beta chain of the CD8 coreceptor, expressed on cytotoxic T cells and thymocytes.
Purification:	Purified antibody is conjugated with R-phycoerythrin (PE) under optimum conditions. Unconjugated antibody and free fluorochrome are removed by size-exclusion chromatography.

## Target Details

Target:	CD8B
Alternative Name:	CD8b ( <a href="#">CD8B Products</a> )

## Target Details

**Background:** The CD8b (CD8 beta) subunit of CD8 T cell coreceptor is expressed in CD8 alpha/beta heterodimers on majority of MHC I-restricted conventional T cells and thymocytes and in CD8 alpha/alpha homodimers on subsets of memory T cells, intraepithelial lymphocytes, NK cells, macrophages, mast cells, and dendritic cells. Regulation of CD8 beta level on T cell surface seems to be an important mechanism to control their effector function. Assembly of CD8 alpha/beta but not alpha/alpha dimers is connected with formation or localization to the lipid rafts. Recruiting triggered TCR complexes to these membrane microdomains as well as affinity of TCR to MHC I is modulated by CD8, thereby affecting the functional diversity of the TCR signaling.,Ly-3, Ly-C, Lyl-3

**UniProt:** [P10300](#)

**Pathways:** [TCR Signaling](#)

## Application Details

**Application Notes:** Flow cytometry: Recommended dilution: 1-4 µg/mL.

**Restrictions:** For Research Use only

## Handling

**Concentration:** 0.5 mg/mL

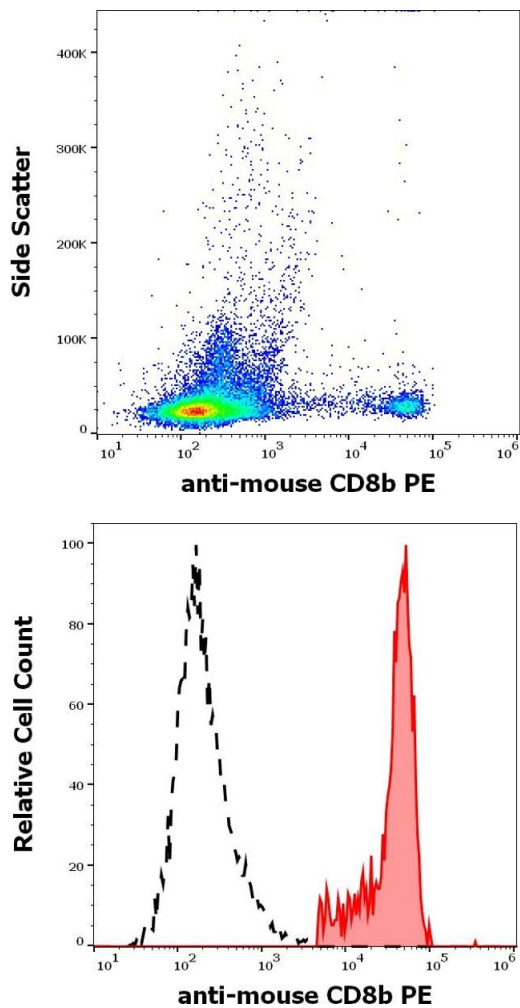
**Buffer:** Phosphate buffered saline (PBS), pH 7.4, 15 mM sodium azide

**Preservative:** Sodium azide

**Precaution of Use:** This product contains Sodium azide: a POISONOUS AND HAZARDOUS SUBSTANCE which should be handled by trained staff only.

**Storage:** 4 °C

**Storage Comment:** Store at 2-8°C. Protect from prolonged exposure to light. Do not freeze.



### Flow Cytometry

**Image 1.** Flow cytometry surface staining pattern of murine splenocyte suspension stained using anti-mouse CD8b (H35-17.2) PE antibody (concentration in sample 0.56  $\mu$ g/mL).

### Flow Cytometry

**Image 2.** Separation of murine CD8b positive splenocytes (red-filled) from murine CD8b negative splenocytes (black-dashed) in flow cytometry analysis (surface staining) of murine splenocyte suspension stained using anti-mouse CD8b (H35-17.2) PE antibody (concentration in sample 0.56  $\mu$ g/mL).