

Datasheet for ABIN7013941
anti-CD8 antibody (APC)



[Go to Product page](#)

2 Images

Overview

Quantity:	100 tests
Target:	CD8
Reactivity:	Human, Non-Human Primate
Host:	Mouse
Clonality:	Monoclonal
Conjugate:	This CD8 antibody is conjugated to APC
Application:	Flow Cytometry (FACS)

Product Details

Purpose:	Anti-Hu CD8 APC
Immunogen:	human blood lymphocytes
Clone:	LT8
Isotype:	IgG1
Specificity:	The mouse monoclonal antibody LT8 recognizes an extracellular epitope of CD8, a cell surface glycoprotein found on most cytotoxic T lymphocytes that mediates efficient cell-cell interactions within the immune system. This antibody blocks Leu2 binding.
Purification:	Purified antibody is conjugated with activated allophycocyanin (APC) under optimum conditions and unconjugated antibody and free fluorochrome are removed by size-exclusion chromatography.

Target Details

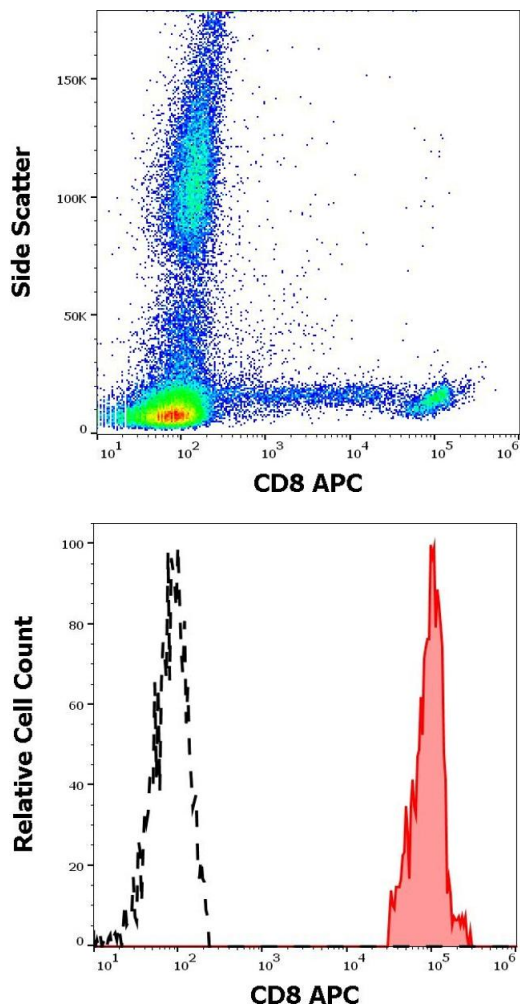
Target:	CD8
Alternative Name:	CD8 (CD8 Products)
Background:	<p>The CD8 T cell coreceptor (monomer approx. 32-34 kDa) is expressed as alpha/beta heterodimer on majority of MHC I-restricted conventional T cells and thymocytes and as alpha/alpha homodimer on subsets of memory T cells, intraepithelial lymphocytes, NK cells and dendritic cells. Regulation of CD8 beta level on T cell surface seems to be an important mechanism to control their effector function. Assembly of CD8 alpha-beta but not alpha-alpha dimers is connected with formation or localization to the lipid rafts. Recruiting triggered TCR complexes to these membrane microdomains as well as affinity of TCR to MHC I is modulated by CD8, thereby affecting the functional diversity of the TCR signaling.,p32, LEU2</p>

Application Details

Application Notes:	<p>Flow cytometry: The reagent is designed for analysis of human blood cells using 10 µL reagent / 100 µL of whole blood or 10⁶ cells in a suspension. The content of a vial (1 ml) is sufficient for 100 tests.</p>
Restrictions:	For Research Use only

Handling

Buffer:	Stabilizing phosphate buffered saline (PBS), pH 7.4, 15 mM sodium azide
Preservative:	Sodium azide
Precaution of Use:	<p>This product contains Sodium azide: a POISONOUS AND HAZARDOUS SUBSTANCE which should be handled by trained staff only.</p>
Storage:	4 °C
Storage Comment:	Store at 2-8°C. Protect from prolonged exposure to light. Do not freeze.



Flow Cytometry

Image 1. Flow cytometry surface staining pattern of human peripheral whole blood stained using anti-human CD8 (LT8) APC antibody (4 μ L reagent / 100 μ L of peripheral whole blood)

Flow Cytometry

Image 2. Separation of human CD8 positive lymphocytes (red-filled) from CD8 negative lymphocytes (black-dashed) in flow cytometry analysis (surface staining) of human peripheral whole blood stained using anti-human CD8 (LT8) APC antibody (4 μ L reagent / 100 μ L of peripheral whole blood).