

Datasheet for ABIN7013946  
**anti-CD56 antibody (PE-DyLight 594)**



[Go to Product page](#)

3 Images

## Overview

Quantity:	100 tests
Target:	CD56 (NCAM1)
Reactivity:	Human
Host:	Mouse
Clonality:	Monoclonal
Conjugate:	This CD56 antibody is conjugated to PE-DyLight 594
Application:	Flow Cytometry (FACS)

## Product Details

Immunogen:	Cell line KG1a
Clone:	LT56
Isotype:	IgG2a
Specificity:	The mouse monoclonal antibody LT56 recognizes an extracellular epitope of CD56 (NCAM), a transmembrane glycoprotein expressed ubiquitously in the nervous system and found also on T cells and NK cells.
Purification:	Purified antibody is conjugated with activated tandem dye of R-phycoerythrin-DyLight®594 (PE-DyLight®594) under optimum conditions and unconjugated antibody and free fluorochrome are removed by size-exclusion chromatography.

## Target Details

Target:	CD56 (NCAM1)
---------	--------------

## Target Details

---

Alternative Name: [CD56 \(NCAM1 Products\)](#)

---

Background: Neural cell adhesion molecule 1,CD56 (NCAM, neural cell adhesion molecule) is a transmembrane glycoprotein of immunoglobulin family serving as adhesive molecule which is ubiquitously expressed in nervous system, usually as 120 kDa, 140 kDa or 180 kDa isoform, and it is also found on T cells and NK cells. Polysialic modification results in reduction of CD56-mediated cell adhesion and is involved in cell migration, axonal growth, pathfinding and synaptic plasticity. CD56 is a widely used neuroendocrine marker with a high sensitivity for neuroendocrine tumours and ovarian granulosa cell tumours.,NCAM1, MSK39

---

Gene ID: 4684

---

UniProt: [P13591](#)

---

## Application Details

---

Application Notes: Flow cytometry: The reagent is designed for analysis of human blood cells using 4 µL reagent / 100 µL of whole blood or 10<sup>6</sup> cells in a suspension. The content of a vial (0.4 ml) is sufficient for 100 tests.

---

Restrictions: For Research Use only

---

## Handling

---

Buffer: Stabilizing phosphate buffered saline (PBS), pH 7.4, 15 mM sodium azide

---

Preservative: Sodium azide

---

Precaution of Use: This product contains Sodium azide: a POISONOUS AND HAZARDOUS SUBSTANCE which should be handled by trained staff only.

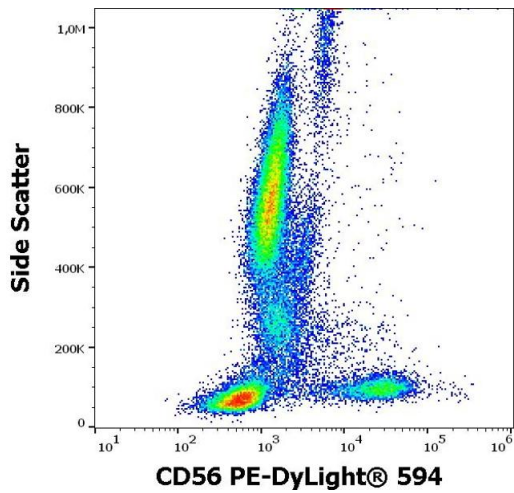
---

Storage: 4 °C

---

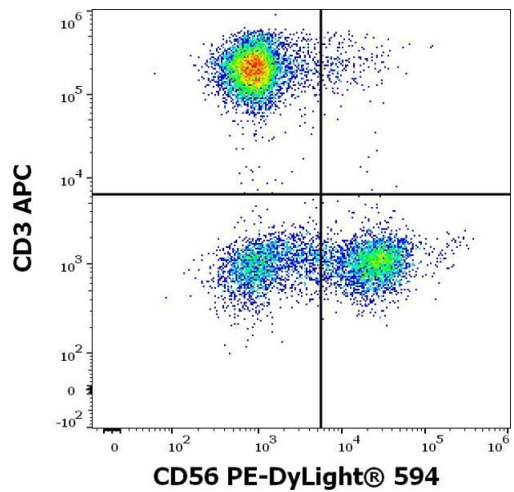
Storage Comment: Store at 2-8°C. Protect from prolonged exposure to light. Do not freeze.

---



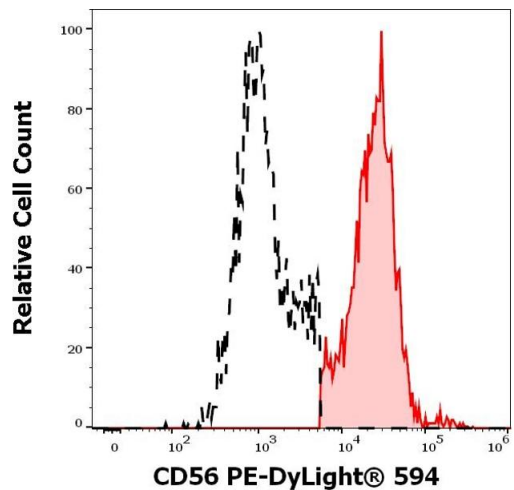
### Flow Cytometry

**Image 1.** Flow cytometry surface staining pattern of human peripheral whole blood stained using anti-human CD56 (LT56) PE-DyLight® 594 antibody (10 µL reagent / 100 µL of peripheral whole blood).



### Flow Cytometry

**Image 2.** Flow cytometry multicolor surface staining of human lymphocytes using anti-human CD56 (LT56) PE-DyLight® 594 antibody (10 µL reagent / 100 µL of peripheral whole blood) and anti-human CD3 (UCHT1) APC antibody (10 µL reagent / 100 µL of peripheral whole blood).



### Flow Cytometry

**Image 3.** Separation of human CD56 positive CD3 negative NK cells (red-filled) from CD56 negative lymphocytes (black-dashed) in flow cytometry analysis (surface staining) stained using anti-human CD56 (LT56) PE-DyLight® 594 antibody (10 µL reagent / 100 µL of peripheral whole blood).