

Datasheet for ABIN7013964

anti-SLAMF6 antibody**2** Images[Go to Product page](#)

Overview

Quantity:	0.1 mg
Target:	SLAMF6
Reactivity:	Human
Host:	Mouse
Clonality:	Monoclonal
Conjugate:	This SLAMF6 antibody is un-conjugated
Application:	Flow Cytometry (FACS), Immunocytochemistry (ICC), Immunoprecipitation (IP)

Product Details

Immunogen:	CD352 transfectants
Clone:	HsF6-4-20
Isotype:	IgG1
Specificity:	The mouse monoclonal antibody hsF6.4.20 recognizes an extracellular epitope of CD352, a transmembrane glycoprotein expressed on NK, T and B cells.
Purification:	Purified by protein-A affinity chromatography.

Target Details

Target:	SLAMF6
Alternative Name:	CD352 (SLAMF6 Products)
Background:	SLAM family member 6,CD352, also known as SLAMF6 (SLAM family member 6) is a type I

Target Details

transmembrane glycoprotein expressed on NK cells, T cells, and B cells, and serves as a coreceptor for them. Besides association of its tyrosine phosphorylated intracellular domain with SH2D1A protein, it associates also with SH2 domain-containing phosphatases, which can modulate the signaling. Multiple CD352 isoforms have been identified.,SLAMF6, KALI, NTBA, Ly108, SF2000

Gene ID: 114836

UniProt: [Q96DU3](#)

Application Details

Application Notes: Flow cytometry: Recommended dilution: 1-12 µg/mL

Restrictions: For Research Use only

Handling

Concentration: 1 mg/mL

Buffer: Phosphate buffered saline (PBS), pH 7.4, 15 mM sodium azide

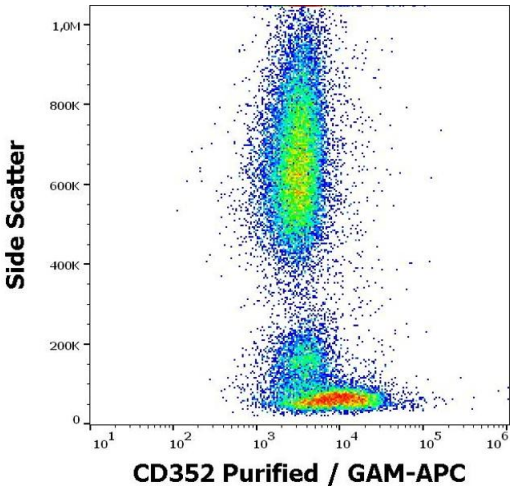
Preservative: Sodium azide

Precaution of Use: This product contains Sodium azide: a POISONOUS AND HAZARDOUS SUBSTANCE which should be handled by trained staff only.

Storage: 4 °C

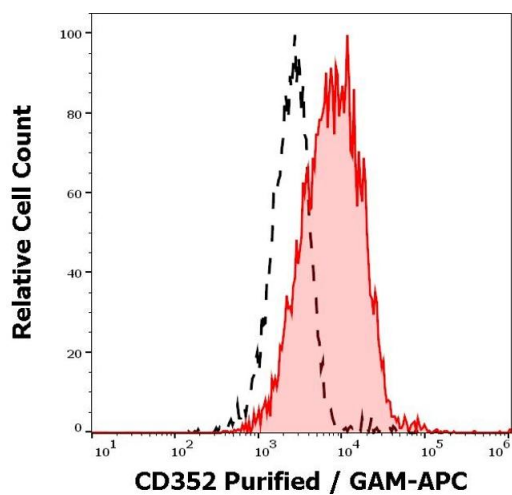
Storage Comment: Store at 2-8°C. Do not freeze.

Images



Flow Cytometry

Image 1. Flow cytometry surface staining pattern of human peripheral whole blood stained using anti-human CD352 (hsF6.4.20) Purified antibody (concentration in sample 0,56 µg/mL, GAM APC).



Flow Cytometry

Image 2. Separation of lymphocytes stained using anti-CD352 (hsF6.4.20) purified antibody (concentration in sample 0,56 $\mu\text{g/mL}$, GAM-APC, red-filled) from lymphocytes unstained by primary antibody (GAM APC, black-dashed) in flow cytometry analysis (surface staining).