



[Go to Product page](#)

Datasheet for ABIN7013973
anti-CDCP1 antibody (FITC)

1 Image

Overview

Quantity:	0.1 mg
Target:	CDCP1
Reactivity:	Human
Host:	Mouse
Clonality:	Monoclonal
Conjugate:	This CDCP1 antibody is conjugated to FITC
Application:	Flow Cytometry (FACS)

Product Details

Immunogen:	NIH-3T3/CD318 cells
Clone:	CUB1
Isotype:	IgG2b
Specificity:	The mouse monoclonal antibody CUB1 recognizes an extracellular epitope of CD318, a type I transmembrane protein involved in early hematopoiesis.
Purification:	Purified antibody is conjugated with fluorescein isothiocyanate (FITC) under optimum conditions and unconjugated antibody and free fluorochrome are removed by size-exclusion chromatography.

Target Details

Target:	CDCP1
Alternative Name:	CD318 (CDCP1 Products)

Target Details

Background: CUB domain containing protein 1,CD318 (CUB domain containing protein 1) is a complement domains-containing transmembrane glycoprotein, which takes part in early hematopoiesis. It is expressed on CD34+CD133+ bone marrow cells, keratinocytes, and in human colorectal and breast cancers. It is being used as a marker of mesenchymal stem-like cells, neural progenitor cells, and also as an independent marker for the diagnosis of myeloid leukemias.,CDCP1, SIMA135, TRASK

Gene ID: 64866

UniProt: [Q9H5V8](#)

Application Details

Application Notes: Flow cytometry: Recommended dilution: 1-4 µg/mL.

Restrictions: For Research Use only

Handling

Concentration: 0.1 mg/mL

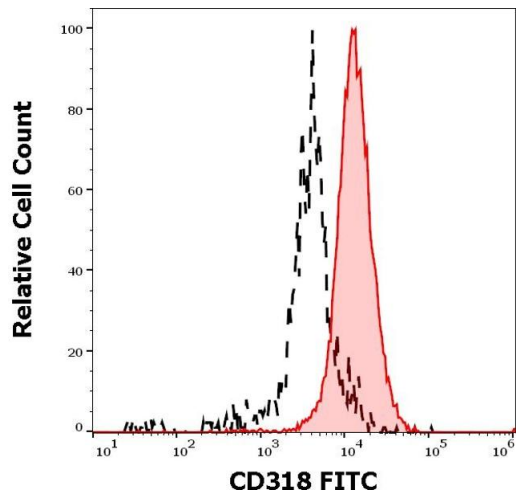
Buffer: Phosphate buffered saline (PBS), pH 7.4, 15 mM sodium azide

Preservative: Sodium azide

Precaution of Use: This product contains Sodium azide: a POISONOUS AND HAZARDOUS SUBSTANCE which should be handled by trained staff only.

Storage: 4 °C

Storage Comment: Store at 2-8°C. Protect from prolonged exposure to light. Do not freeze.



Flow Cytometry

Image 1. Separation of HT-29 cells stained using anti-human CD318 (CUB1) FITC antibody (concentration in sample 5 µg/mL, red-filled) from HT-29 cells stained using mouse IgG2b isotype control (MPC-11) FITC antibody (concentration in sample 5 µg/mL, same as CD318 FITC concentration, black-dashed) in flow cytometry analysis (surface staining) of HT-29 cell suspension.