

Datasheet for ABIN7013974  
**anti-CDCP1 antibody (PE)**



[Go to Product page](#)

1 Image

## Overview

Quantity:	100 µg
Target:	CDCP1
Reactivity:	Human
Host:	Mouse
Clonality:	Monoclonal
Conjugate:	This CDCP1 antibody is conjugated to PE
Application:	Flow Cytometry (FACS)

## Product Details

Purpose:	Anti-Hu CD318 PE
Immunogen:	NIH-3T3/CD318 cells
Clone:	CUB1
Isotype:	IgG2b
Specificity:	The mouse monoclonal antibody CUB1 recognizes an extracellular epitope of CD318, a type I transmembrane protein involved in early hematopoiesis.
Purification:	Purified antibody is conjugated with R-phycoerythrin (PE) under optimum conditions. Unconjugated antibody and free fluorochrome are removed by size-exclusion chromatography.

## Target Details

Target:	CDCP1
---------	-------

## Target Details

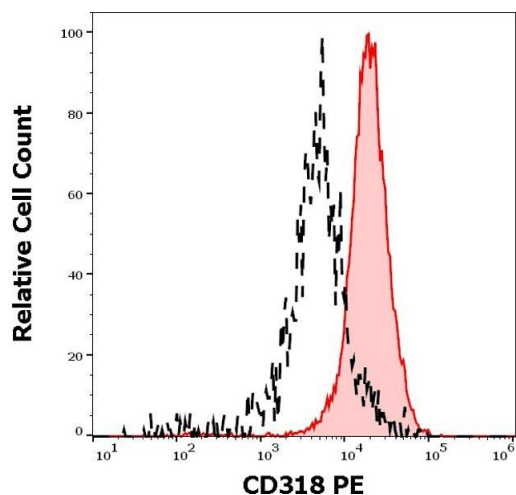
Alternative Name:	CD318 ( <a href="#">CDCP1 Products</a> )
Background:	CUB domain containing protein 1,CD318 (CUB domain containing protein 1) is a complement domains-containing transmembrane glycoprotein, which takes part in early hematopoiesis. It is expressed on CD34+CD133+ bone marrow cells, keratinocytes, and in human colorectal and breast cancers. It is being used as a marker of mesenchymal stem-like cells, neural progenitor cells, and also as an independent marker for the diagnosis of myeloid leukemias.,CDCP1, SIMA135, TRASK
Gene ID:	64866
UniProt:	<a href="#">Q9H5V8</a>

## Application Details

Application Notes:	Flow cytometry: Recommended dilution: 1-4 µg/mL
Restrictions:	For Research Use only

## Handling

Concentration:	0.1 mg/mL
Buffer:	Stabilizing phosphate buffered saline (PBS), pH 7.4, 15 mM sodium azide
Preservative:	Sodium azide
Precaution of Use:	This product contains Sodium azide: a POISONOUS AND HAZARDOUS SUBSTANCE which should be handled by trained staff only.
Storage:	4 °C
Storage Comment:	Store at 2-8°C. Protect from prolonged exposure to light. Do not freeze.



### Flow Cytometry

**Image 1.** Separation of HT-29 cells stained using anti-human CD318 (CUB1) PE antibody (concentration in sample 5 µg/mL, red-filled) from HT-29 cells stained using mouse IgG2b isotype control (MPC-11) PE antibody (concentration in sample 5 µg/mL, same as CD318 PE concentration, black-dashed) in flow cytometry analysis (surface staining) of HT-29 cell suspension.