



[Go to Product page](#)

Datasheet for ABIN7013983  
**anti-DPP4 antibody (PE)**

2 Images

### Overview

Quantity:	0.1 mg
Target:	DPP4
Reactivity:	Mouse
Host:	Rat
Clonality:	Monoclonal
Conjugate:	This DPP4 antibody is conjugated to PE
Application:	Flow Cytometry (FACS)

### Product Details

Immunogen:	BALB/c thymocytes
Clone:	H194-112
Isotype:	IgG2a kappa
Specificity:	The rat monoclonal antibody H194-112 recognizes an extracellular epitope of CD26, a 110 kDa type II membrane glycoprotein, which is a peptidase expressed on mature thymocytes, T cells (especially activated), B cells, NK cells and macrophages.
Purification:	Purified antibody is conjugated with R-phycoerythrin (PE) under optimum conditions. Unconjugated antibody and free fluorochrome are removed by size-exclusion chromatography.

### Target Details

Target:	DPP4
Alternative Name:	CD26 ( <a href="#">DPP4 Products</a> )

## Target Details

---

**Background:** Dipeptidyl peptidase 4,CD26, also known as dipeptidyl peptidase IV (DPP-IV), is a homodimeric cell surface serine peptidase that degrades IFN-gamma-induced cytokines, acts as a T cell costimulatory molecule, and participates in multiple immunopathological roles in leukocyte homing and inflammation. Alterations in its peptidase activity are characteristic of malignant transformation. The enzymatic activity increases dramatically with tumour grade and severity. CD26 is expressed in various blood cell types, but also e.g. in cells that are histogenetically related to activated fibroblasts. Alterations in CD26 density have been reported on circulating monocytes and CD4+ T cells during rheumatoid arthritis and systemic lupus erythematosus.,DPP4, TP103, ADCP-2, ADABP

**Gene ID:** 13482

**UniProt:** [P28843](#)

**Pathways:** [Peptide Hormone Metabolism](#), [Regulation of Leukocyte Mediated Immunity](#)

## Application Details

---

**Application Notes:** Flow cytometry: Recommended dilution: 1-5 µg/mL.

**Restrictions:** For Research Use only

## Handling

---

**Concentration:** 0.5 mg/mL

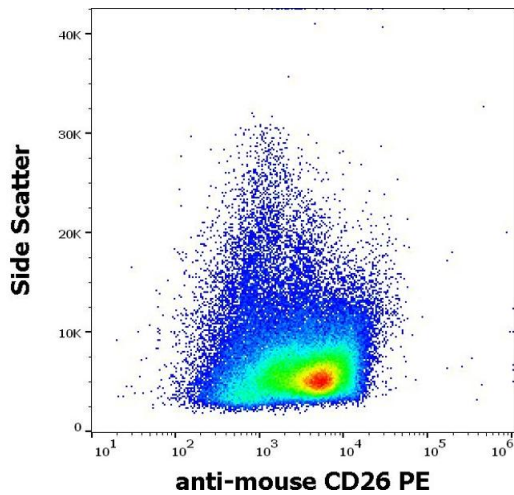
**Buffer:** Phosphate buffered saline (PBS), pH 7.4, 15 mM sodium azide

**Preservative:** Sodium azide

**Precaution of Use:** This product contains Sodium azide: a POISONOUS AND HAZARDOUS SUBSTANCE which should be handled by trained staff only.

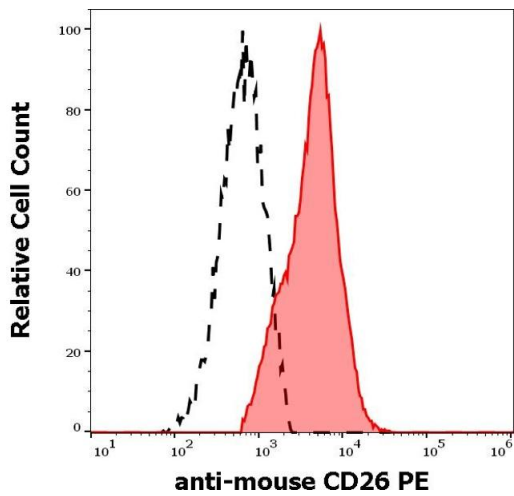
**Storage:** 4 °C

**Storage Comment:** Store at 2-8°C. Protect from prolonged exposure to light. Do not freeze.



### Flow Cytometry

**Image 1.** Flow cytometry surface staining pattern of murine splenocyte suspension stained using anti-mouse CD26 (H194-112) PE antibody (concentration in sample 15  $\mu$ g/mL).



### Flow Cytometry

**Image 2.** Separation of murine CD26 positive cells (red-filled) from murine CD26 negative cells (black-dashed) in flow cytometry analysis (surface staining) of murine splenocyte suspension stained using anti-mouse CD26 (H194-112) PE antibody (concentration in sample 15  $\mu$ g/mL).