

Datasheet for ABIN7013988
anti-CD2 antibody

2 Images



[Go to Product page](#)

Overview

Quantity:	100 µg
Target:	CD2
Reactivity:	Mouse
Host:	Rat
Clonality:	Monoclonal
Conjugate:	This CD2 antibody is un-conjugated
Application:	Flow Cytometry (FACS), Immunoprecipitation (IP)

Product Details

Purpose:	Anti-Ms CD2 Purified
Immunogen:	murine thymocytes
Clone:	RM2-5
Isotype:	IgG2b lambda
Specificity:	The rat monoclonal antibody RM2-5 recognizes an extracellular epitope of CD2, a 50 kDa glycoprotein present on the human peripheral blood T lymphocytes and NK cells, also expressed by all thymocytes.
Purification:	Purified by protein-G affinity chromatography.

Target Details

Target:	CD2
---------	-----

Target Details

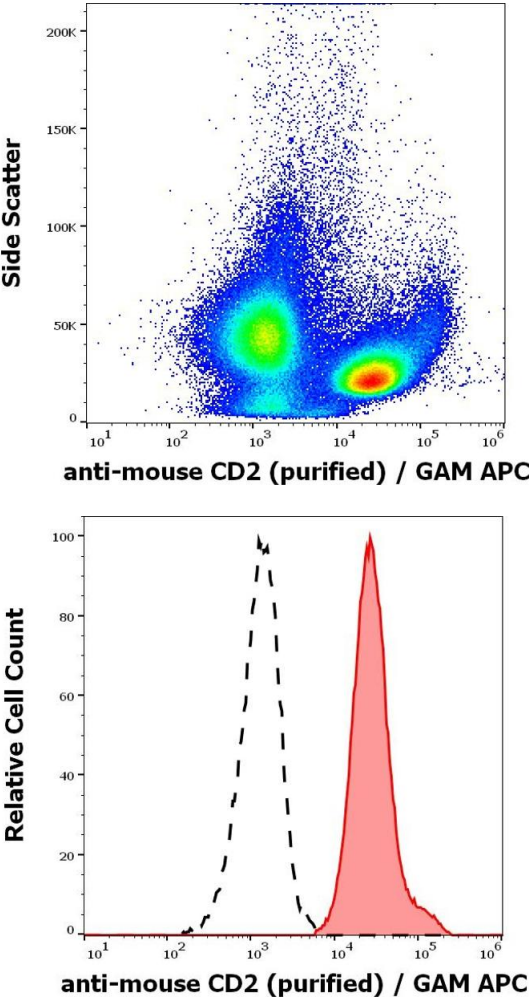
Alternative Name:	CD2 (CD2 Products)
Background:	CD2 Molecule,CD2 belongs to T lymphocyte glycoproteins of immunoglobulin superfamily. Its interaction with CD58 stabilizes adhesion between T cells and antigen presenting or target cells. Relatively low affinity of CD2 to CD58 (as measured in solution) is compensated within the two-dimensional cell-cell interface to provide tight adhesion. Moreover, T cell activation induces increased CD2 expression and its lateral mobility, making easier contact between CD2 and CD58. Subsequently, T cell activation causes fixation of CD58-CD2 at sites of cell-cell contact, thereby strengthening intercellular adhesion. CD2 deficiency reduces intestinal inflammation and helps to control infection.,LFA-2, Ly37, Ly-37
Gene ID:	12481
UniProt:	P08920

Application Details

Application Notes:	Flow cytometry: Recommended dilution: 1-4 µg/mL
Restrictions:	For Research Use only

Handling

Concentration:	1 mg/mL
Buffer:	Phosphate buffered saline (PBS), pH 7.4, 15 mM sodium azide
Preservative:	Sodium azide
Precaution of Use:	This product contains Sodium azide: a POISONOUS AND HAZARDOUS SUBSTANCE which should be handled by trained staff only.
Storage:	4 °C
Storage Comment:	Store at 2-8°C. Do not freeze.



Flow Cytometry

Image 1. Flow cytometry surface staining pattern of murine splenocyte suspension stained using anti-mouse CD2 (RM2-5) purified antibody (concentration in sample 0,44 µg/mL, GAM APC).

Flow Cytometry

Image 2. Separation of murine CD2 positive cells (red-filled) from CD2 negative cells (black-dashed) in flow cytometry analysis (surface staining) of murine splenocyte suspension stained using anti-mouse CD2 (RM2-5) purified antibody (concentration in sample 0,44 µg/mL, GAM APC).