

Datasheet for ABIN7013997  
**anti-CD32/CD16 antibody (PE)**[Go to Product page](#)

## 2 Images

## Overview

Quantity:	0.1 mg
Target:	CD32/CD16
Reactivity:	Mouse
Host:	Rat
Clonality:	Monoclonal
Conjugate:	This CD32/CD16 antibody is conjugated to PE
Application:	Flow Cytometry (FACS)

## Product Details

Immunogen:	Murine pre-B cells
Clone:	93
Isotype:	IgG2a lambda
Specificity:	The rat monoclonal antibody 93 recognizes a common extracellular epitope of murine CD16 (FcgammaRIII) and CD32 (FcgammaRII), the low affinity receptors for IgG.
Purification:	Purified antibody is conjugated with R-phycoerythrin (PE) under optimum conditions. Unconjugated antibody and free fluorochrome are removed by size-exclusion chromatography.

## Target Details

Target:	CD32/CD16
Alternative Name:	CD16/CD32 ( <a href="#">CD32/CD16 Products</a> )

## Target Details

Background:	CD16 (FcγRIII) is a 50-65 kDa glycoprotein serving as a low affinity IgG receptor. Unlike human, the murine protein is expressed only as a transmembrane isoform. Also CD32 (FcγRII) is a low affinity receptor for IgG, but its affinity is lower than that of CD16. These receptors are expressed on monocytes/macrophages, NK cells, granulocytes, mast cells, dendritic cells, and B cells. Their role is to mediate adaptive immune responses through binding the antibody-antigen immunocomplexes, but their effect on the particular cell differs according to the cell type. CD16, CD32, FcγRIII, FcγRII, FCGR3, FCGR2
-------------	--

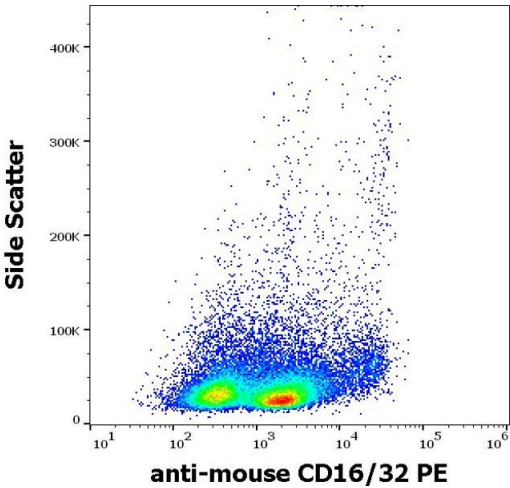
## Application Details

Application Notes:	Flow cytometry: Recommended dilution: 2 µg/mL.
Restrictions:	For Research Use only

## Handling

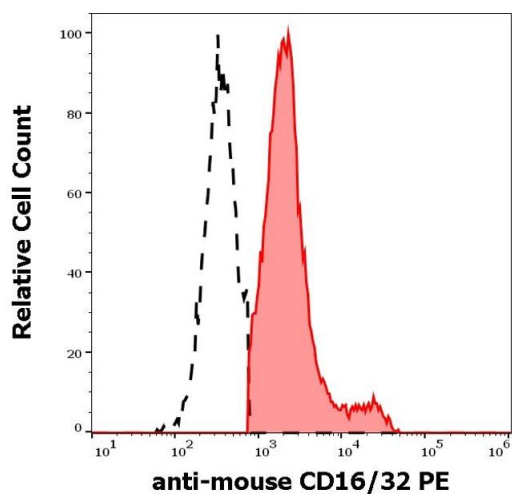
Concentration:	0.5 mg/mL
Buffer:	Phosphate buffered saline (PBS), pH 7.4, 15 mM sodium azide
Preservative:	Sodium azide
Precaution of Use:	This product contains Sodium azide: a POISONOUS AND HAZARDOUS SUBSTANCE which should be handled by trained staff only.
Storage:	4 °C
Storage Comment:	Store at 2-8°C. Protect from prolonged exposure to light. Do not freeze.

## Images



### Flow Cytometry

**Image 1.** Flow cytometry surface staining pattern of murine splenocyte suspension stained using anti-mouse CD16/32 (93) PE antibody (concentration in sample 5 µg/mL).



### Flow Cytometry

**Image 2.** Separation of murine CD16/32 positive cells (red-filled) from murine CD16/32 negative cells (black-dashed) in flow cytometry analysis (surface staining) of murine splenocyte suspension stained using anti-mouse CD16/32 (93) PE antibody (concentration in sample 5  $\mu\text{g/mL}$ ).