

Datasheet for ABIN7014002
anti-VCAM1 antibody



[Go to Product page](#)

2 Images

Overview

Quantity:	0.1 mg
Target:	VCAM1
Reactivity:	Mouse
Host:	Rat
Clonality:	Monoclonal
Conjugate:	This VCAM1 antibody is un-conjugated
Application:	Flow Cytometry (FACS), Immunoprecipitation (IP), Immunohistochemistry (Frozen Sections) (IHC (fro)), Functional Studies (Func)

Product Details

Immunogen:	Murine preadipose cell line PA6
Clone:	429 (MVCAM-A)
Isotype:	IgG2a kappa
Specificity:	The rat monoclonal antibody 429 (also known as MVCAM.A) recognizes an extracellular epitope of murine CD106, a 100-110 kDa type I membrane protein of the immunoglobulin superfamily, a crucial mediator of leukocyte adhesion, and a costimulation molecule.
Purification:	Purified by protein-G affinity chromatography.

Target Details

Target:	VCAM1
Alternative Name:	CD106 (VCAM1 Products)

Target Details

Background: Vascular cell adhesion molecule 1,CD106 / VCAM-1 (vascular cell adhesion molecule-1) is an Ig-like cell surface adhesion molecule binding VLA-4 integrin. VCAM-1 is a potent T cell costimulatory molecule taking part in their positive selection and survival, as well as in adhesion, transendothelial migration and activation of peripheral T cells. VCAM-1 is also involved in endothelial cell-cell contacts. Whereas VCAM-1 normally mediates leukocyte extravasation to sites of tissue inflammation, tumour cells can use overexpressed VCAM-1 to escape T cell immunity.,Vcam-1

Gene ID: 22329

UniProt: [Q3UPN1](#)

Pathways: [Carbohydrate Homeostasis](#)

Application Details

Application Notes: Flow cytometry: Recommended dilution: 1-4 µg/mL.
Functional application: Blocking

Restrictions: For Research Use only

Handling

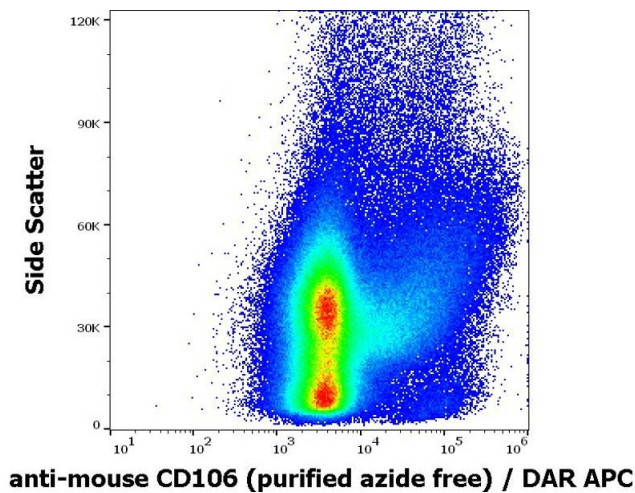
Concentration: 1 mg/mL

Buffer: Phosphate buffered saline (PBS), pH 7.4

Preservative: Azide free

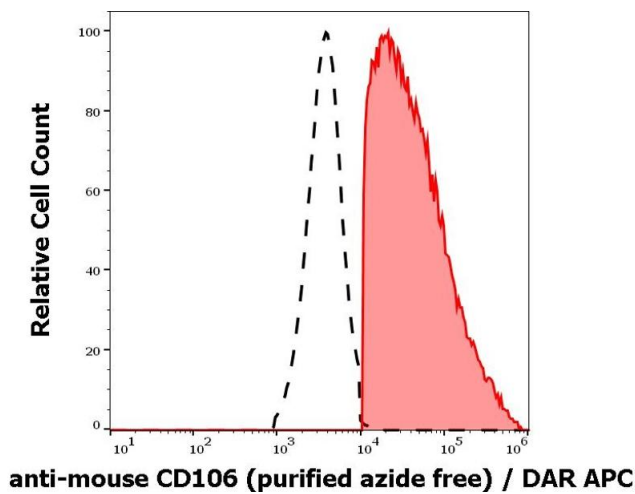
Storage: 4 °C

Storage Comment: Store at 2-8°C. Do not freeze.



Flow Cytometry

Image 1. Flow cytometry surface staining pattern of murine bone marrow cell suspension stained using anti-mouse CD160 (429) purified antibody (azide free, concentration in sample 0,19 µg/mL) DAR APC.



Flow Cytometry

Image 2. Separation of murine CD160 positive cells (red-filled) from CD160 negative cells (black-dashed) in flow cytometry analysis (surface staining) of murine bone marrow cell suspension stained using anti-mouse CD160 (429) purified antibody (azide free, concentration in sample 0,19 µg/mL) DAR APC.