



[Go to Product page](#)

Datasheet for ABIN7014007

anti-SEMA4D/CD100 antibody (PE)

1 Image

Overview

Quantity:	100 tests
Target:	SEMA4D/CD100 (SEMA4D)
Reactivity:	Human
Host:	Mouse
Clonality:	Monoclonal
Conjugate:	This SEMA4D/CD100 antibody is conjugated to PE
Application:	Flow Cytometry (FACS)

Product Details

Immunogen:	PHA stimulated human PBL
Clone:	133-1C6
Isotype:	IgM
Specificity:	The mouse monoclonal antibody 133-1C6 recognizes an extracellular epitope of CD100, an approximately 150 kDa (when reduced) semaphorin family member expressed mainly on lymphocytes, NK cells, monocytes/macrophages and granulocytes, but also on some non-hematopoietic cells.
Purification:	Purified antibody is conjugated with R-phycoerythrin (PE) under optimum conditions. Unconjugated antibody and free fluorochrome are removed by size-exclusion chromatography.

Target Details

Target:	SEMA4D/CD100 (SEMA4D)
---------	-----------------------

Target Details

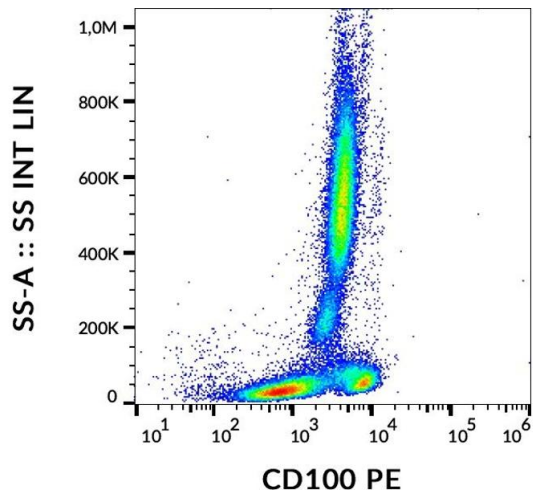
Alternative Name:	CD100 (SEMA4D Products)
Background:	Semaphorin 4D,CD100, also known as semaphorin 4D, is a homodimerizing type I transmembrane glycoprotein containing an extracellular semaphorin domain. It is expressed on most hematopoietic cells with the exception of immature bone marrow cells, erythrocytes and platelets. A 120 kDa soluble form is generated from the transmembrane form by proteolytic cascade following primary T and B cell activation. It seems CD100 acts through dampening CD72-mediated negative signaling. CD100 promotes angiogenesis, invasive growth, proliferation and anti-apoptosis of cancer cells in vitro. Higher expression levels of CD100 correlate with poor survival in soft tissue sarcoma patients.,COLL4, SEMA4D, semaphorin 4D
Gene ID:	10507
UniProt:	Q92854
Pathways:	Regulation of Cell Size

Application Details

Application Notes:	Flow cytometry: The reagent is designed for analysis of human blood cells using 10 µL reagent / 100 µL of whole blood or 10 ⁶ cells in a suspension. The content of a vial (1 ml) is sufficient for 100 tests.
Restrictions:	For Research Use only

Handling

Buffer:	Stabilizing phosphate buffered saline (PBS), pH 7.4, 15 mM sodium azide
Preservative:	Sodium azide
Precaution of Use:	This product contains Sodium azide: a POISONOUS AND HAZARDOUS SUBSTANCE which should be handled by trained staff only.
Storage:	4 °C
Storage Comment:	Store at 2-8°C. Protect from prolonged exposure to light. Do not freeze.



Flow Cytometry

Image 1. Flow cytometry analysis (surface staining) of human peripheral blood with anti-CD100 (133-1C6) PE.