

Datasheet for ABIN7014010
Rat IgG2a Isotype Control



[Go to Product page](#)

1 Image

Overview

Quantity:	100 µg
Target:	IgG2a
Host:	Rat
Clonality:	Monoclonal
Application:	Flow Cytometry (FACS), Isotype Control (IsoC), ELISA, Western Blotting (WB), Immunoprecipitation (IP), Immunocytochemistry (ICC), Immunohistochemistry (Frozen Sections) (IHC (fro)), Immunohistochemistry (Paraffin-embedded Sections) (IHC (p))

Product Details

Purpose:	Rat IgG2a Isotype Control Purified
Clone:	RTG2A1-1
Isotype:	IgG2a
Specificity:	This rat IgG2a kappa monoclonal antibody (clone RTG2A1-1, also known as G2A-1-1 or KLH/G2A-1-1) detects specifically the hemocyanin of keyhole limpet and can be used as a negative control antibody in other species.
Purification:	Purified by protein-G affinity chromatography.

Target Details

Target:	IgG2a
Abstract:	IgG2a Products
Target Type:	Antibody

Application Details

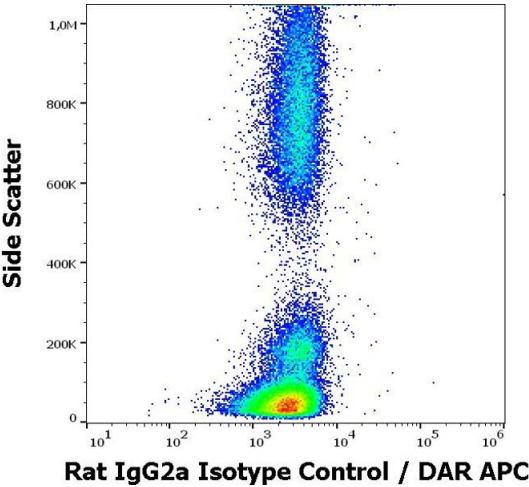
Application Notes: Negative control: The reagent is intended as an isotype control to establish the amount of non-specific antibody binding. For your particular experiment, use the same concentration of this control antibody as the recommended working concentration of the antigen-specific antibody. Also, when working with prediluted antibodies, dilute the isotype control to the same concentration as is the concentration of the antigen-specific antibody in the prediluted antibody solution you are using. If under particular experimental conditions the background signal of the isotype control is too high (usually when working concentrations of used antibodies are above 10 µg/mL of incubation mixture), change the conditions of your experiment to reduce the background.

Restrictions: For Research Use only

Handling

Concentration:	1 mg/mL
Buffer:	Phosphate buffered saline (PBS), pH 7.4, 15 mM sodium azide
Preservative:	Sodium azide
Precaution of Use:	This product contains Sodium azide: a POISONOUS AND HAZARDOUS SUBSTANCE which should be handled by trained staff only.
Storage:	4 °C
Storage Comment:	Store at 2-8°C. Do not freeze.

Images



Flow Cytometry

Image 1. Flow cytometry surface nonspecific staining pattern of human peripheral whole blood stained using rat IgG2a Isotype control (RTG2A1-1) purified antibody (concentration in sample 3 µg/mL, DAR APC).