

Datasheet for ABIN7014012
Rat IgG2a Isotype Control



[Go to Product page](#)

1 Image

Overview

Quantity:	100 µg
Target:	IgG2a
Host:	Rat
Clonality:	Monoclonal
Application:	Flow Cytometry (FACS), Isotype Control (IsoC), ELISA, Western Blotting (WB), Immunoprecipitation (IP), Immunocytochemistry (ICC), Immunohistochemistry (Frozen Sections) (IHC (fro)), Functional Studies (Func), Immunohistochemistry (Paraffin-embedded Sections) (IHC (p))

Product Details

Purpose:	Rat IgG2a Isotype Control LOW ENDOTOXIN
Clone:	RTG2A1-1
Isotype:	IgG2a
Specificity:	This rat IgG2a kappa monoclonal antibody (clone RTG2A1-1, also known as G2A-1-1 or KLH/G2A-1-1) detects specifically the hemocyanin of keyhole limpet and can be used as a negative control antibody in other species.
Purification:	Purified by protein-G affinity chromatography.
Endotoxin Level:	Endotoxin level is less than 0.01 EU/µg of the protein, as determined by the LAL test.

Target Details

Target:	IgG2a
---------	-------

Target Details

Abstract: IgG2a Products

Target Type: Antibody

Application Details

Application Notes: Negative control: The reagent is intended as an isotype control to establish the amount of non-specific antibody binding. For your particular experiment, use the same concentration of this control antibody as the recommended working concentration of the antigen-specific antibody. Also, when working with prediluted antibodies, dilute the isotype control to the same concentration as is the concentration of the antigen-specific antibody in the prediluted antibody solution you are using. If under particular experimental conditions the background signal of the isotype control is too high (usually when working concentrations of used antibodies are above 10 µg/mL of incubation mixture), change the conditions of your experiment to reduce the background.

Restrictions: For Research Use only

Handling

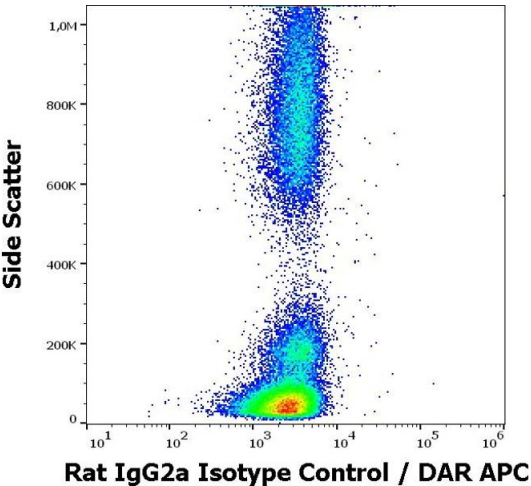
Concentration: 1 mg/mL

Buffer: Phosphate buffered saline (PBS), pH 7.4

Storage: 4 °C

Storage Comment: Store at 2-8°C. Do not freeze.

Images



Flow Cytometry

Image 1. Flow cytometry surface nonspecific staining pattern of human peripheral whole blood stained using rat IgG2a Isotype control (RTG2A1-1) purified antibody (concentration in sample 3 µg/mL, DAR APC).