



[Go to Product page](#)

Datasheet for ABIN701425  
**anti-MTF1 antibody (AA 101-200)**

1 Image

Overview

Quantity:	100 µL
Target:	MTF1
Binding Specificity:	AA 101-200
Reactivity:	Human
Host:	Rabbit
Clonality:	Polyclonal
Conjugate:	This MTF1 antibody is un-conjugated
Application:	ELISA, Immunofluorescence (Cultured Cells) (IF (cc)), Immunofluorescence (Paraffin-embedded Sections) (IF (p)), Immunohistochemistry (Frozen Sections) (IHC (fro)), Immunohistochemistry (Paraffin-embedded Sections) (IHC (p))

Product Details

Immunogen:	KLH conjugated synthetic peptide derived from human MTF-1
Isotype:	IgG
Cross-Reactivity:	Human
Predicted Reactivity:	Mouse,Rat,Dog,Cow,Pig,Horse,Rabbit
Purification:	Purified by Protein A.

Target Details

Target:	MTF1
---------	------

## Target Details

---

Alternative Name:	MTF-1 ( <a href="#">MTF1 Products</a> )
Background:	Synonyms: ZRF, MTF-1, Metal regulatory transcription factor 1, MRE-binding transcription factor, Transcription factor MTF-1, MTF1 Background: Activates the metallothionein I promoter. Binds to the metal responsive element (MRE).
Gene ID:	4520
UniProt:	<a href="#">Q14872</a>

## Application Details

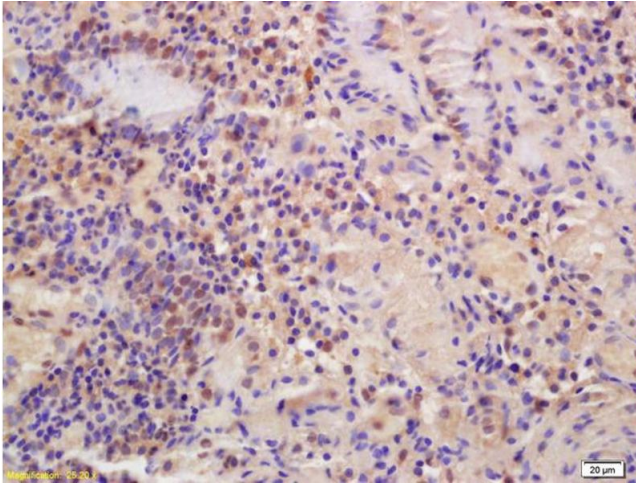
---

Application Notes:	ELISA 1:500-1000 IHC-P 1:200-400 IHC-F 1:100-500 IF(IHC-P) 1:50-200 IF(IHC-F) 1:50-200 IF(ICC) 1:50-200
Restrictions:	For Research Use only

## Handling

---

Format:	Liquid
Concentration:	1 µg/µL
Buffer:	0.01M TBS( pH 7.4) with 1 % BSA, 0.02 % Proclin300 and 50 % Glycerol.
Preservative:	ProClin
Precaution of Use:	This product contains ProClin: a POISONOUS AND HAZARDOUS SUBSTANCE, which should be handled by trained staff only.
Storage:	4 °C,-20 °C
Storage Comment:	Shipped at 4°C. Store at -20°C for one year. Avoid repeated freeze/thaw cycles.
Expiry Date:	12 months



### Immunohistochemistry

**Image 1.** Formalin-fixed and paraffin embedded human gastric carcinoma labeled with Anti-MTF-1 Polyclonal Antibody, Unconjugated (ABIN701425) at 1:200 followed by conjugation to the secondary antibody and DAB staining