

Datasheet for ABIN701635
anti-ESM1 antibody (AA 51-150)

4 Images

[Go to Product page](#)

Overview

Quantity:	100 µL
Target:	ESM1
Binding Specificity:	AA 51-150
Reactivity:	Human, Mouse, Rat
Host:	Rabbit
Clonality:	Polyclonal
Conjugate:	This ESM1 antibody is un-conjugated
Application:	Western Blotting (WB), ELISA, Immunofluorescence (Cultured Cells) (IF (cc)), Immunofluorescence (Paraffin-embedded Sections) (IF (p)), Immunohistochemistry (Frozen Sections) (IHC (fro))

Product Details

Immunogen:	KLH conjugated synthetic peptide derived from human ESM1
Isotype:	IgG
Cross-Reactivity:	Human, Mouse, Rat
Predicted Reactivity:	Cow,Pig,Horse
Purification:	Purified by Protein A.

Target Details

Target:	ESM1
---------	------

Target Details

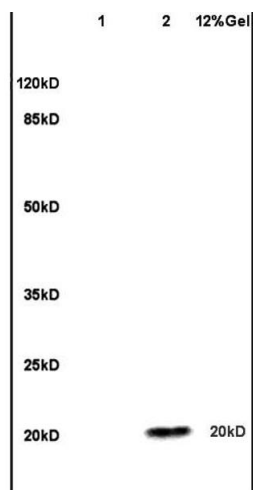
Alternative Name:	ESM1 (ESM1 Products)
Background:	Synonyms: endocan, Endothelial cell-specific molecule 1, ESM-1, ESM1 Background: Involved in angiogenesis, promotes angiogenic sprouting. May have potent implications in lung endothelial cell-leukocyte interactions.
Gene ID:	11082
UniProt:	Q9NQ30
Pathways:	Growth Factor Binding

Application Details

Application Notes:	WB 1:300-5000 ELISA 1:500-1000 IHC-P 1:200-400 IHC-F 1:100-500 IF(IHC-P) 1:50-200 IF(IHC-F) 1:50-200 IF(ICC) 1:50-200
Restrictions:	For Research Use only

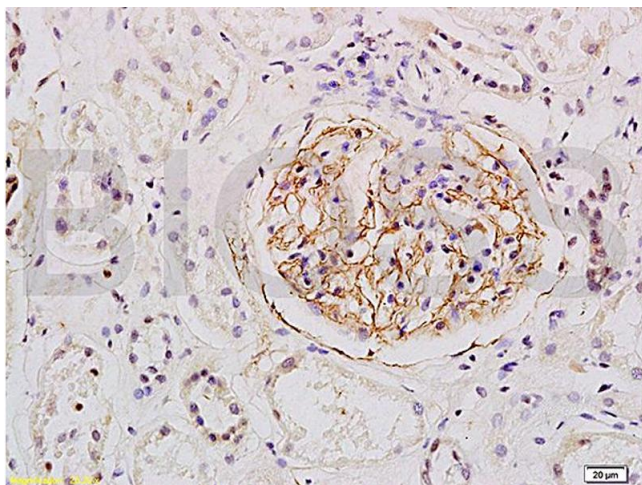
Handling

Format:	Liquid
Concentration:	1 µg/µL
Buffer:	0.01M TBS(pH 7.4) with 1 % BSA, 0.02 % Proclin300 and 50 % Glycerol.
Preservative:	ProClin
Precaution of Use:	This product contains ProClin: a POISONOUS AND HAZARDOUS SUBSTANCE, which should be handled by trained staff only.
Storage:	4 °C,-20 °C
Storage Comment:	Shipped at 4°C. Store at -20°C for one year. Avoid repeated freeze/thaw cycles.
Expiry Date:	12 months



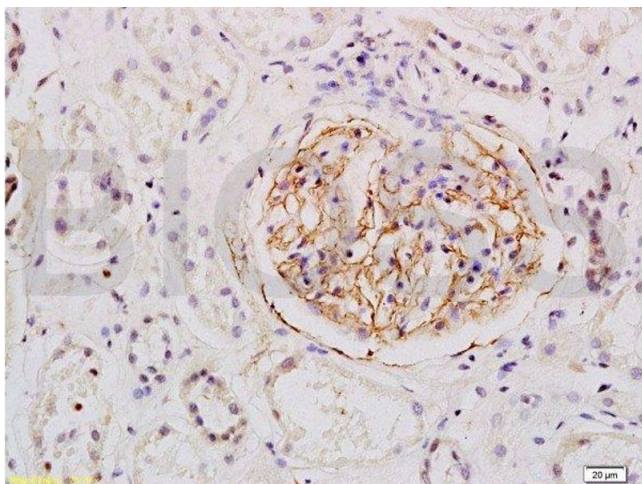
SDS-PAGE

Image 1. Lane 1: mouse brain lysates Lane 2: human colon carcinoma lysates probed with Anti ESM1 Polyclonal Antibody, Unconjugated (ABIN701635) at 1:200 in 4 °C. Followed by conjugation to secondary antibody at 1:3000 90min in 37 °C. Predicted band 20kD. Observed band size: 20kD



Immunohistochemistry

Image 2. Formalin-fixed and human kidney tissue labeled with Anti-ESM1 Polyclonal Antibody, Unconjugated (ABIN701635) at 1:200 followed by conjugation to the secondary antibody and DAB staining



Immunohistochemistry (Paraffin-embedded Sections)

Image 3. Formalin-fixed and human kidney tissue labeled with Anti-ESM1 Polyclonal Antibody, Unconjugated at 1:200 followed by conjugation to the secondary antibody and DAB staining

Please check the [product details page](#) for more images. Overall 4 images are available for ABIN701635.