

Datasheet for ABIN701702  
**anti-TLN1 antibody (AA 1601-1750) (FITC)**[Go to Product page](#)

## 3 Images

## Overview

Quantity:	100 µL
Target:	TLN1
Binding Specificity:	AA 1601-1750
Reactivity:	Mouse, Rat
Host:	Rabbit
Clonality:	Polyclonal
Conjugate:	This TLN1 antibody is conjugated to FITC
Application:	Immunofluorescence (Cultured Cells) (IF (cc)), Immunofluorescence (Paraffin-embedded Sections) (IF (p))

## Product Details

Immunogen:	KLH conjugated synthetic peptide derived from human Talin 1.
Isotype:	IgG
Cross-Reactivity:	Mouse, Rat
Predicted Reactivity:	Human,Dog,Cow,Pig,Horse,Rabbit
Purification:	Purified by Protein A.

## Target Details

Target:	TLN1
Alternative Name:	Talin1 ( <a href="#">TLN1 Products</a> )

## Target Details

Background:	<p>Synonyms: TLN 1, ILWEQ, Talin 1, Talin, TLN, TLN1, TLN 2, Talin 2, Talin 2, TLN2.</p> <p>Background: Talin, a multifunctional constituent of cell-substratum attachment sites, is a high molecular weight protein (225-270 kDa) found in variety of tissues and cell types. It is localized at a subset of adherens junctions, specialized cell-cell and cell-matrix associations that are characterized by the presence of filamentous actin at the cytoplasmic face of the junctional complex. In cultured cells, talin is absent from cell-cell junctions and found predominantly at adhesion plaques and in fibrillar streaks underlying cell surface fibronectin. Talin interacts with at least two other proteins that are localized at adhesion plaques, vinculin and integrin. Talin and vinculin have been shown to interact with each other and both have been proposed to be involved in generating the transmembrane connection, between the extracellular matrix and the cytoskeleton, that occurs at adhesion plaques. At physiological ionic strength, talin is an elongate, flexible, monomeric protein with the ability to self-associate into dimers at higher protein concentrations.</p>
Gene ID:	7094, 83660
UniProt:	<a href="#">Q9Y4G6</a> , <a href="#">Q9Y490</a>
Pathways:	<a href="#">Cell-Cell Junction Organization</a> , <a href="#">ER-Nucleus Signaling</a> , <a href="#">Maintenance of Protein Location</a>

## Application Details

Application Notes:	IF(IHC-P) 1:50-200 IF(IHC-F) 1:50-200 IF(ICC) 1:50-200
Restrictions:	For Research Use only

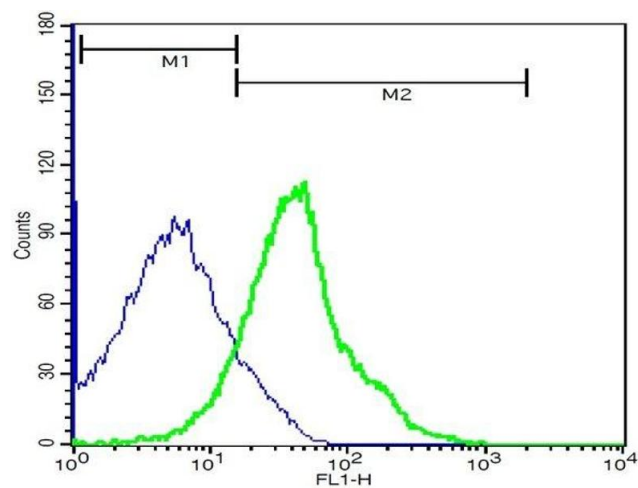
## Handling

Format:	Liquid
Concentration:	1 µg/µL
Buffer:	Aqueous buffered solution containing 0.01M TBS ( pH 7.4) with 1 % BSA, 0.03 % Proclin300 and 50 % Glycerol.
Preservative:	ProClin
Precaution of Use:	This product contains ProClin: a POISONOUS AND HAZARDOUS SUBSTANCE, which should be handled by trained staff only.
Storage:	-20 °C

Handling

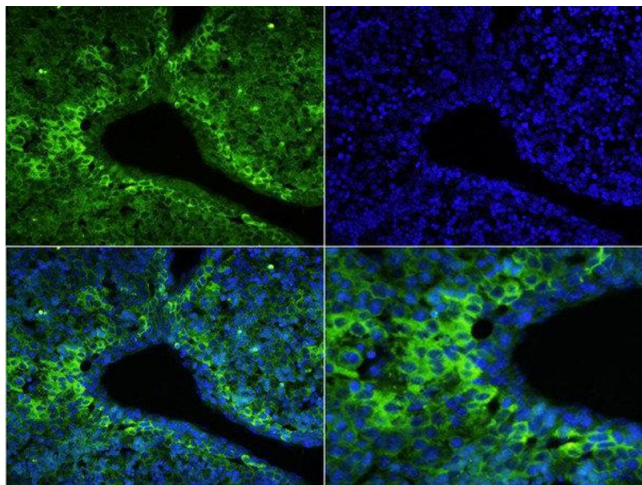
Storage Comment:	Store at -20°C. Aliquot into multiple vials to avoid repeated freeze-thaw cycles.
Expiry Date:	12 months

Images



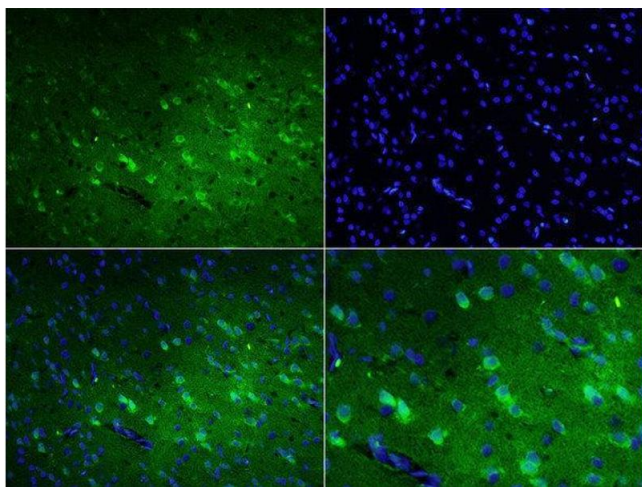
Flow Cytometry

**Image 1.** Mouse hepatocytes probed with Rabbit Anti-Talin Polyclonal Antibody, FITC Conjugated (ABIN701702) at 1:100 for 40 minutes (green) compared to control cells (blue).



Immunofluorescence (Paraffin-embedded Sections)

**Image 2.** Formalin-fixed and paraffin embedded mouse fetal liver labeled with Rabbit Anti-Talin Polyclonal Antibody, FITC Conjugated at 1:200 for 60 minutes.



Immunofluorescence (Paraffin-embedded Sections)

**Image 3.** Formalin-fixed and paraffin embedded rat brain labeled with Rabbit Anti-Talin Polyclonal Antibody, FITC Conjugated at 1:200 for 60 minutes.