

Datasheet for ABIN701785  
**anti-PKC delta antibody (AA 65-170)**



[Go to Product page](#)

1 Image

## Overview

|                      |   |
|----------------------|---|
| Quantity:            | 100 µL  |
| Target:              | PKC delta (PKCd)  |
| Binding Specificity: | AA 65-170   |
| Reactivity:          | Human, Mouse, Rat   |
| Host:                | Rabbit  |
| Clonality:           | Polyclonal  |
| Conjugate:           | This PKC delta antibody is un-conjugated  |
| Application:         | Western Blotting (WB), ELISA, Immunofluorescence (Cultured Cells) (IF (cc)),<br>Immunofluorescence (Paraffin-embedded Sections) (IF (p)), Immunohistochemistry (Paraffin-embedded Sections) (IHC (p)), Immunohistochemistry (Frozen Sections) (IHC (fro)) |

## Product Details

|                       |   |
|-----------------------|---|
| Immunogen:            | KLH conjugated synthetic peptide derived from human PKC delta |
| Isotype:              | IgG   |
| Cross-Reactivity:     | Human, Mouse, Rat   |
| Predicted Reactivity: | Cow,Horse,Rabbit  |
| Purification:         | Purified by Protein A.  |

## Target Details

|         |                  |
|---------|------------------|
| Target: | PKC delta (PKCd) |
|---------|------------------|

## Target Details

---

Alternative Name: PKC delta ([PKCd Products](#))

---

Background: Synonyms: MAY 1, MAY1, nPKC delta, PCKd, PKC d, PKC delta, PKC-d, PKCD, PKCdelta, PRKC D, PRKC delta, PRKC-d, PRKCd, Protein Kinase C delta, Protein kinase C delta type, Protein Kinase Cdelta, KPCD\_HUMAN.

Background: Protein kinase C (PKC) is a family of serine- and threonine-specific protein kinases that can be activated by calcium and the second messenger diacylglycerol. PKC family members phosphorylate a wide variety of protein targets and are known to be involved in diverse cellular signaling pathways. PKC family members also serve as major receptors for phorbol esters, a class of tumor promoters. Each member of the PKC family has a specific expression profile and is believed to play distinct roles in cells. The protein encoded by this gene is one of the PKC family members. Studies both in human and mice demonstrate that this kinase is involved in B cell signaling and in the regulation of growth, apoptosis, and differentiation of a variety of cell types. Alternatively spliced transcript variants encoding the same protein have been observed. [provided by RefSeq, Jul 2008].

---

Gene ID: 5580

---

UniProt: [Q05655](#)

---

Pathways: [Interferon-gamma Pathway](#), [EGFR Signaling Pathway](#), [Neurotrophin Signaling Pathway](#), [Thyroid Hormone Synthesis](#), [Regulation of Actin Filament Polymerization](#), [Carbohydrate Homeostasis](#), [Myometrial Relaxation and Contraction](#), [M Phase](#), [G-protein mediated Events](#), [Dicarboxylic Acid Transport](#), [Positive Regulation of Response to DNA Damage Stimulus](#), [Interaction of EGFR with phospholipase C-gamma](#), [Thromboxane A2 Receptor Signaling](#), [Lipid Metabolism](#)

---

## Application Details

---

Application Notes: WB 1:300-5000  
ELISA 1:500-1000  
IHC-P 1:200-400  
IHC-F 1:100-500  
IF(IHC-P) 1:50-200  
IF(IHC-F) 1:50-200  
IF(ICC) 1:50-200

---

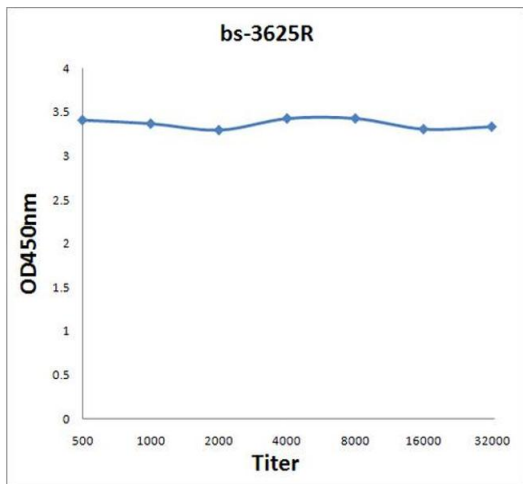
Restrictions: For Research Use only

---

## Handling

|                    |  |
|--------------------|--|
| Format:            | Liquid   |
| Concentration:     | 1 µg/µL  |
| Buffer:            | 0.01M TBS( pH 7.4) with 1 % BSA, 0.02 % Proclin300 and 50 % Glycerol.  |
| Preservative:      | ProClin  |
| Precaution of Use: | This product contains ProClin: a POISONOUS AND HAZARDOUS SUBSTANCE, which should be handled by trained staff only. |
| Storage:           | 4 °C,-20 °C  |
| Storage Comment:   | Shipped at 4°C. Store at -20°C for one year. Avoid repeated freeze/thaw cycles.                                    |
| Expiry Date:       | 12 months  |

## Images



### ELISA

**Image 1.** Antigen: 2 µg/100 µL Primary: Antiserum, 1:500, 1:1000, 1:2000, 1:4000, 1:8000, 1:16000, 1:32000; Secondary: HRP conjugated Rabbit Anti-Goat IgG at 1: 5000; TMB staining Read the data in Microplate Reader by 450nm.