

Datasheet for ABIN701867

anti-SYNPO antibody (AA 601-700) (FITC)[Go to Product page](#)**1** Image**1** Publication

Overview

| | |
|----------------------|--|
| Quantity: | 100 µL |
| Target: | SYNPO |
| Binding Specificity: | AA 601-700 |
| Reactivity: | Mouse, Rat |
| Host: | Rabbit |
| Clonality: | Polyclonal |
| Conjugate: | This SYNPO antibody is conjugated to FITC |
| Application: | Western Blotting (WB), Flow Cytometry (FACS) |

Product Details

| | |
|-----------------------|--|
| Immunogen: | KLH conjugated synthetic peptide derived from human Synaptopodin |
| Isotype: | IgG |
| Cross-Reactivity: | Mouse, Rat |
| Predicted Reactivity: | Human |
| Purification: | Purified by Protein A. |

Target Details

| | |
|-------------------|---|
| Target: | SYNPO |
| Alternative Name: | Synaptopodin (SYNPO Products) |
| Background: | Synonyms: Synaptopodin, SYNPO, KIAA129 |

Target Details

Background: Actin-associated protein that may play a role in modulating actin-based shape and motility of dendritic spines and renal podocyte foot processes. Seems to be essential for the formation of spine apparatuses in spines of telencephalic neurons, which is involved in synaptic plasticity (By similarity).

Gene ID: 11346

UniProt: [Q8N3V7](#)

Application Details

Application Notes: FCM 1:20-100

Restrictions: For Research Use only

Handling

Format: Liquid

Concentration: 1 µg/µL

Buffer: Aqueous buffered solution containing 0.01M TBS (pH 7.4) with 1 % BSA, 0.03 % Proclin300 and 50 % Glycerol.

Preservative: ProClin

Precaution of Use: This product contains ProClin: a POISONOUS AND HAZARDOUS SUBSTANCE, which should be handled by trained staff only.

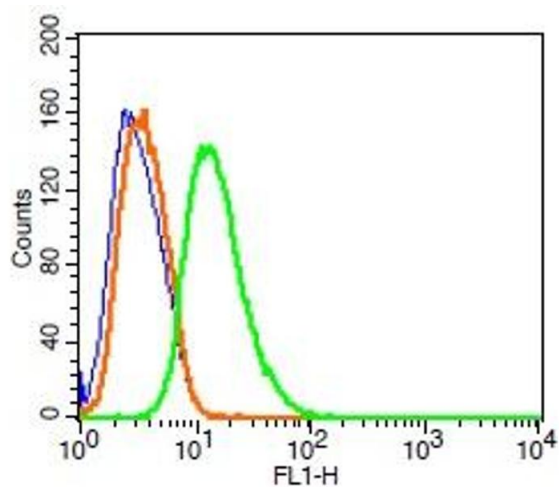
Storage: -20 °C

Storage Comment: Store at -20°C. Aliquot into multiple vials to avoid repeated freeze-thaw cycles.

Expiry Date: 12 months

Publications

Product cited in: Jayachandran, Lugo, Heiling, Miller, Rule, Lieske: "Extracellular vesicles in urine of women with but not without kidney stones manifest patterns similar to men: a case control study." in: **Biology of sex differences**, Vol. 6, pp. 2, (2015) ([PubMed](#)).



Flow Cytometry

Image 1. Rat RSC96 cells probed with Synaptopodin Polyclonal Antibody, FITC conjugated (bs-3633R-FITC) (green) at 1:100 for 30 minutes compared to unstained cells (blue) and isotype control (orange).