

Datasheet for ABIN702205

anti-KCNA7 antibody[Go to Product page](#)

1 Image

Overview

Quantity:	100 µL
Target:	KCNA7
Reactivity:	Human, Mouse, Rat
Host:	Rabbit
Clonality:	Polyclonal
Conjugate:	This KCNA7 antibody is un-conjugated
Application:	ELISA, Western Blotting (WB)

Product Details

Immunogen:	KLH conjugated synthetic peptide derived from human KCNA7
Isotype:	IgG
Cross-Reactivity:	Human, Mouse
Predicted Reactivity:	Rat,Dog,Pig,Chicken,Rabbit
Purification:	Purified by Protein A.

Target Details

Target:	KCNA7
Alternative Name:	Kcna7 (KCNA7 Products)
Background:	Optional[synonyms]: HAK 6, HAK6, KCNA 7, KV1.7, Potassium voltage gated channel shaker related subfamily member 7, Potassium voltage gated channel subfamily A member 7, Voltage

Target Details

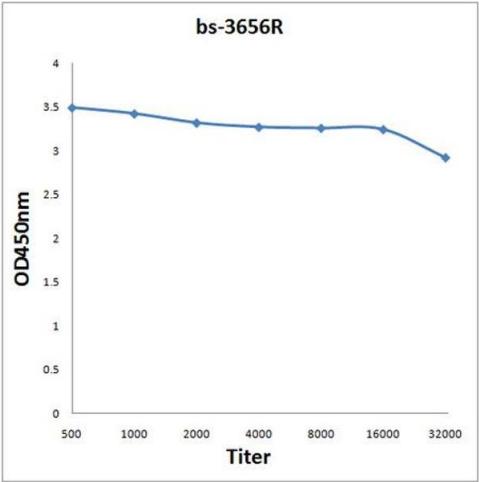
	dependent potassium channel Kv1.7, Voltage gated potassium channel KCNA7, Voltage gated potassium channel subunit Kv1.7.
Gene ID:	3743
UniProt:	Q96RP8

Application Details

Application Notes:	WB: (1:100-1000), IHC-P: (1:100-500), IF(IHC-P): (1:50-200) Optimal working dilution should be determined by the investigator.
Restrictions:	For Research Use only

Handling

Format:	Liquid
Concentration:	1 mg/mL
Buffer:	0.01M TBS(pH 7.4) with 1 % BSA, 0.02 % Proclin300 and 50 % Glycerol.
Preservative:	Sodium azide
Precaution of Use:	This product contains Sodium azide: a POISONOUS AND HAZARDOUS SUBSTANCE which should be handled by trained staff only.
Storage:	4 °C,-20 °C
Storage Comment:	Shipped at 4°C. Store at -20°C for one year. Avoid repeated freeze/thaw cycles.
Expiry Date:	12 months



ELISA

Image 1. Antigen: 0.2 µg/100 µL Primary: Antiserum, 1:500, 1:1000, 1:2000, 1:4000, 1:8000, 1:16000, 1:32000; Secondary: HRP conjugated Goat Anti-Rabbit IgG at 1:5000; TMB staining; Read the data in Microplate Reader by 450nm