

Datasheet for ABIN702235
anti-PPP1R8 antibody (AA 21-120)

2 Images

[Go to Product page](#)

Overview

Quantity:	100 µL
Target:	PPP1R8
Binding Specificity:	AA 21-120
Reactivity:	Mouse, Zebrafish (Danio rerio)
Host:	Rabbit
Clonality:	Polyclonal
Conjugate:	This PPP1R8 antibody is un-conjugated
Application:	Western Blotting (WB), ELISA, Immunofluorescence (Cultured Cells) (IF (cc)), Immunofluorescence (Paraffin-embedded Sections) (IF (p)), Immunohistochemistry (Paraffin-embedded Sections) (IHC (p)), Immunohistochemistry (Frozen Sections) (IHC (fro))

Product Details

Immunogen:	KLH conjugated synthetic peptide derived from human NIPP1
Isotype:	IgG
Cross-Reactivity:	Mouse, Zebrafish (Danio rerio)
Predicted Reactivity:	Human,Rat,Cow,Pig,Horse,Chicken,Rabbit,Guinea Pig
Purification:	Purified by Protein A.

Target Details

Target:	PPP1R8
---------	--------

Target Details

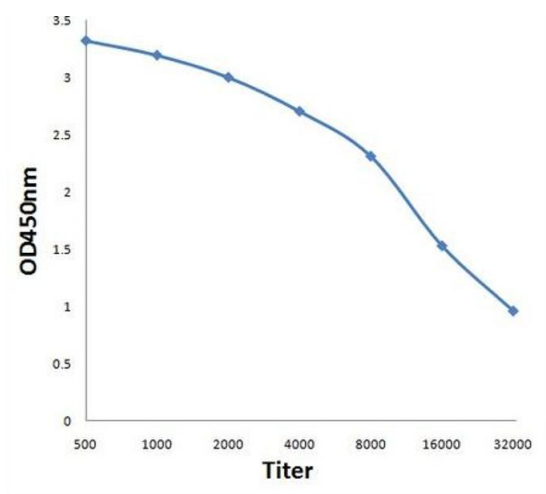
Alternative Name:	Nipp1/Ard1 (PPP1R8 Products)
Background:	<p>Synonyms: Activator of RNA decay, ARD 1, ARD1, Homolog of E.coli RNase E, NIPP 1, NIPP1, Nuclear inhibitor of protein phosphatase 1, Nuclear subunit of PP1, PPP1R8, Protein phosphatase 1 regulatory inhibitor subunit 8, Protein phosphatase 1 regulatory subunit 8, RNase E.</p> <p>Background: Inhibitor subunit of the major nuclear protein phosphatase 1 (PP1). It has RNA binding activity but does not cleave RNA and may target PP1 to RNA associated substrates. May also be involved in pre mRNA splicing. Binds DNA and might act as a transcriptional repressor. Seems to be required for cell proliferation.</p>
Gene ID:	5511

Application Details

Application Notes:	WB 1:300-5000 ELISA 1:500-1000 IHC-P 1:200-400 IHC-F 1:100-500 IF(IHC-P) 1:50-200 IF(IHC-F) 1:50-200 IF(ICC) 1:50-200
Restrictions:	For Research Use only

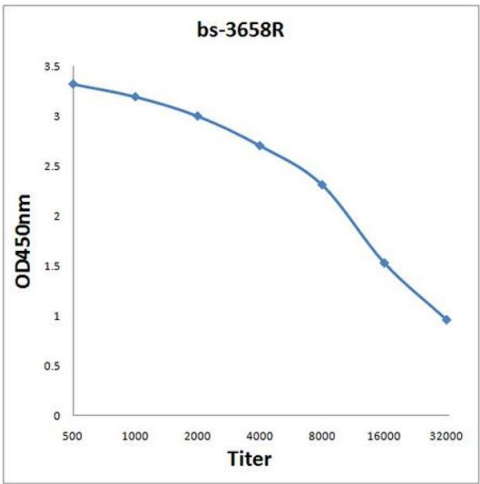
Handling

Format:	Liquid
Concentration:	1 µg/µL
Buffer:	0.01M TBS(pH 7.4) with 1 % BSA, 0.02 % Proclin300 and 50 % Glycerol.
Preservative:	ProClin
Precaution of Use:	This product contains ProClin: a POISONOUS AND HAZARDOUS SUBSTANCE, which should be handled by trained staff only.
Storage:	4 °C, -20 °C
Storage Comment:	Shipped at 4°C. Store at -20°C for one year. Avoid repeated freeze/thaw cycles.
Expiry Date:	12 months



ELISA

Image 1. Antigen: 0.2ug/100ul, Primary: Antiserum, 1:500, 1:1000, 1:2000, 1:4000, 1:8000, 1:16000, 1:32000, Secondary: HRP conjugated Goat Anti-Rabbit IgG at 1: 5000, TMB staining Read the data in Microplate Reader by 450nm,



ELISA

Image 2. Antigen: 0.2 µg/100 µL Primary: Antiserum, 1:500, 1:1000, 1:2000, 1:4000, 1:8000, 1:16000, 1:32000; Secondary: HRP conjugated Goat Anti-Rabbit IgG at 1: 5000; TMB staining; Read the data in Microplate Reader by 450nm