

Datasheet for ABIN702370  
**anti-SLC44A1 antibody (AA 81-180)**[Go to Product page](#)

2 Images

1 Publication

## Overview

Quantity:	100 µL
Target:	SLC44A1
Binding Specificity:	AA 81-180
Reactivity:	Mouse
Host:	Rabbit
Clonality:	Polyclonal
Conjugate:	This SLC44A1 antibody is un-conjugated
Application:	Western Blotting (WB), ELISA, Immunofluorescence (Cultured Cells) (IF (cc)), Immunofluorescence (Paraffin-embedded Sections) (IF (p)), Immunohistochemistry (Frozen Sections) (IHC (fro)), Immunohistochemistry (Paraffin-embedded Sections) (IHC (p))

## Product Details

Immunogen:	KLH conjugated synthetic peptide derived from human SLC44A1/CD92
Isotype:	IgG
Cross-Reactivity:	Mouse
Predicted Reactivity:	Human,Rat,Dog,Cow,Pig,Horse,Rabbit
Purification:	Purified by Protein A.

## Target Details

Target:	SLC44A1
---------	---------

## Target Details

Alternative Name:	SLC44A1/CD92 ( <a href="#">SLC44A1 Products</a> )
Background:	Synonyms: CD92, CTL1, CDW92, CHTL1, Choline transporter-like protein 1, Solute carrier family 44 member 1, SLC44A1  Background: Choline transporter. May be involved in membrane synthesis and myelin production.
Gene ID:	23446
UniProt:	<a href="#">Q8WWI5</a>

## Application Details

Application Notes:	WB 1:300-5000 ELISA 1:500-1000 IHC-P 1:200-400 IHC-F 1:100-500 IF(IHC-P) 1:50-200 IF(IHC-F) 1:50-200 IF(ICC) 1:50-200
Restrictions:	For Research Use only

## Handling

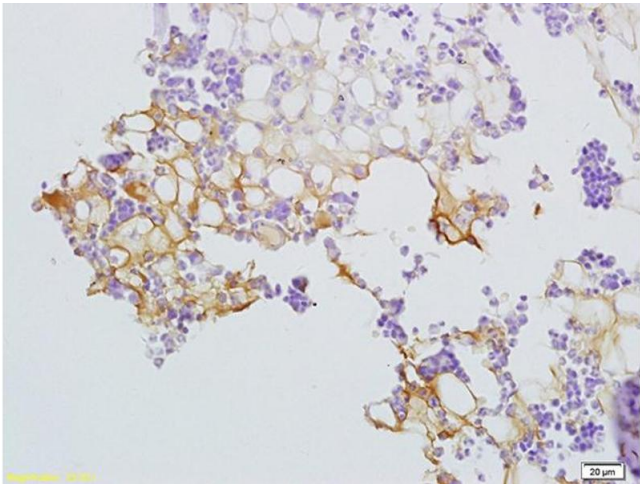
Format:	Liquid
Concentration:	1 µg/µL
Buffer:	0.01M TBS( pH 7.4) with 1 % BSA, 0.02 % Proclin300 and 50 % Glycerol.
Preservative:	ProClin
Precaution of Use:	This product contains ProClin: a POISONOUS AND HAZARDOUS SUBSTANCE, which should be handled by trained staff only.
Storage:	4 °C,-20 °C
Storage Comment:	Shipped at 4°C. Store at -20°C for one year. Avoid repeated freeze/thaw cycles.
Expiry Date:	12 months

## Publications

Product cited in:	Baumgartner, Trinder, Galimanis, Post, Phang, Ross, Winn: "Characterization of choline
-------------------	--

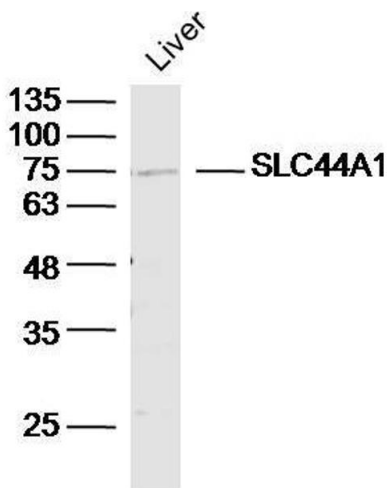
transporters in the human placenta over gestation." in: **Placenta**, (2015) ([PubMed](#)).

Images



Immunohistochemistry

**Image 1.** Formalin-fixed and paraffin embedded rat bone marrow labeled with Anti-SLC44A1/CD92 Polyclonal Antibody, Unconjugated (ABIN702370) at 1:200 followed by conjugation to the secondary antibody and DAB staining



Western Blotting

**Image 2.** Mouse liver lysates probed with SLC44A1/CD92 Polyclonal Antibody, unconjugated at 1:300 overnight at 4°C followed by a conjugated secondary antibody for 60 minutes at 37°C.