

Datasheet for ABIN702505

anti-ALDH1A2 antibody (AA 441-518)**3** Images[Go to Product page](#)

Overview

Quantity:	100 µL
Target:	ALDH1A2
Binding Specificity:	AA 441-518
Reactivity:	Mouse, Rat, Zebrafish (Danio rerio)
Host:	Rabbit
Clonality:	Polyclonal
Conjugate:	This ALDH1A2 antibody is un-conjugated
Application:	Western Blotting (WB), ELISA, Immunofluorescence (Cultured Cells) (IF (cc)), Immunofluorescence (Paraffin-embedded Sections) (IF (p)), Immunohistochemistry (Paraffin- embedded Sections) (IHC (p)), Immunohistochemistry (Frozen Sections) (IHC (fro))

Product Details

Immunogen:	KLH conjugated synthetic peptide derived from human RALDH2
Isotype:	IgG
Cross-Reactivity:	Mouse, Rat, Zebrafish (Danio rerio)
Predicted Reactivity:	Human,Dog,Cow,Pig,Horse,Rabbit
Purification:	Purified by Protein A.

Target Details

Target:	ALDH1A2
---------	---------

Target Details

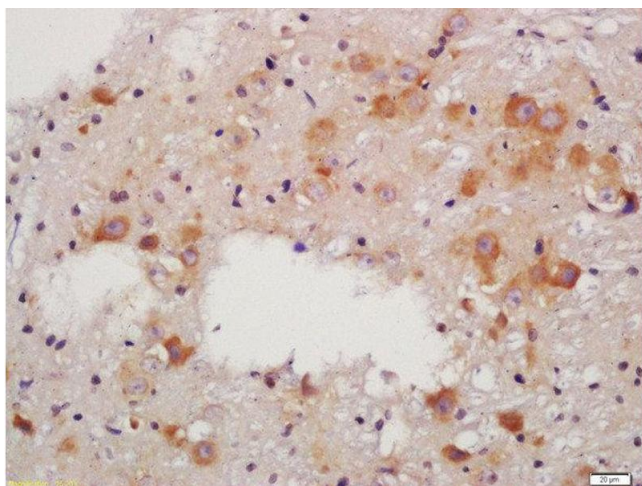
Alternative Name:	RALDH2 (ALDH1A2 Products)
Background:	Synonyms: RALDH2, RALDH2-T, RALDH(II), Retinal dehydrogenase 2, RALDH 2, Aldehyde dehydrogenase family 1 member A2, Retinaldehyde-specific dehydrogenase type 2, ALDH1A2 Background: Recognizes as substrates free retinal and cellular retinol-binding protein-bound retinal. Does metabolize octanal and decanal but does not metabolize citral, benzaldehyde, acetaldehyde and propanal efficiently (By similarity).
Gene ID:	8854
UniProt:	O94788
Pathways:	Retinoic Acid Receptor Signaling Pathway

Application Details

Application Notes:	WB 1:300-5000 ELISA 1:500-1000 IHC-P 1:200-400 IHC-F 1:100-500 IF(IHC-P) 1:50-200 IF(IHC-F) 1:50-200 IF(ICC) 1:50-200
Restrictions:	For Research Use only

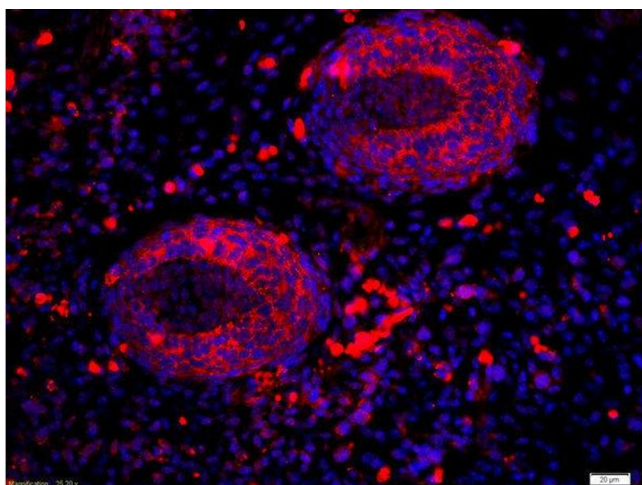
Handling

Format:	Liquid
Concentration:	1 µg/µL
Buffer:	0.01M TBS(pH 7.4) with 1 % BSA, 0.02 % Proclin300 and 50 % Glycerol.
Preservative:	ProClin
Precaution of Use:	This product contains ProClin: a POISONOUS AND HAZARDOUS SUBSTANCE, which should be handled by trained staff only.
Storage:	4 °C, -20 °C
Storage Comment:	Shipped at 4°C. Store at -20°C for one year. Avoid repeated freeze/thaw cycles.
Expiry Date:	12 months



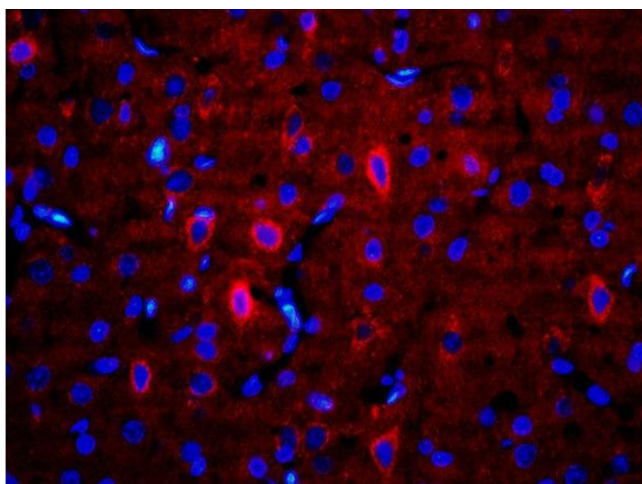
Immunohistochemistry (Paraffin-embedded Sections)

Image 1. Formalin-fixed and paraffin embedded rat brain labeled with Anti-RALDH2 Polyclonal Antibody, Unconjugated at 1:200 followed by conjugation to the secondary antibody and DAB staining



Immunofluorescence

Image 2. Formalin-fixed and paraffin-embedded mouse embryo labeled with Anti-RALDH2 Polyclonal Antibody, Unconjugated used at 1:200 dilution for 40 minutes at 37°C.



Immunofluorescence

Image 3. Formalin-fixed and paraffin-embedded rat brain labeled with Anti-RALDH2 Polyclonal Antibody, Unconjugated used at 1:200 dilution for 40 minutes at 37°C.