

Datasheet for ABIN702700  
**anti-CD1d1 antibody (AA 51-150)**

## 3 Images

[Go to Product page](#)

## Overview

Quantity:	100 µL
Target:	CD1d1 (CD1D1)
Binding Specificity:	AA 51-150
Reactivity:	Mouse, Rat
Host:	Rabbit
Clonality:	Polyclonal
Conjugate:	This CD1d1 antibody is un-conjugated
Application:	Flow Cytometry (FACS), Western Blotting (WB), Immunofluorescence (Cultured Cells) (IF (cc)), Immunohistochemistry (Paraffin-embedded Sections) (IHC (p))

## Product Details

Immunogen:	KLH conjugated synthetic peptide derived from mouse CD1d1
Isotype:	IgG
Cross-Reactivity:	Mouse, Rat
Purification:	Purified by Protein A.

## Target Details

Target:	CD1d1 (CD1D1)
Alternative Name:	CD1d1 ( <a href="#">CD1D1 Products</a> )
Background:	Synonyms: Cd1a, Cd1d, CD1.1, Ly-38, AI747460, Antigen-presenting glycoprotein CD1d1,

## Target Details

CD1d.1, Cd1d1

Background: Antigen-presenting protein that binds self and non-self glycolipids and presents them to T-cell receptors on natural killer T-cells.

Gene ID: 12479

UniProt: [P11609](#)

## Application Details

Application Notes: WB 1:300-5000  
FCM 1:20-100  
IHC-P 1:200-400  
IF(ICC) 1:50-200

Restrictions: For Research Use only

## Handling

Format: Liquid

Concentration: 1 µg/µL

Buffer: 0.01M TBS( pH 7.4) with 1 % BSA, 0.02 % Proclin300 and 50 % Glycerol.

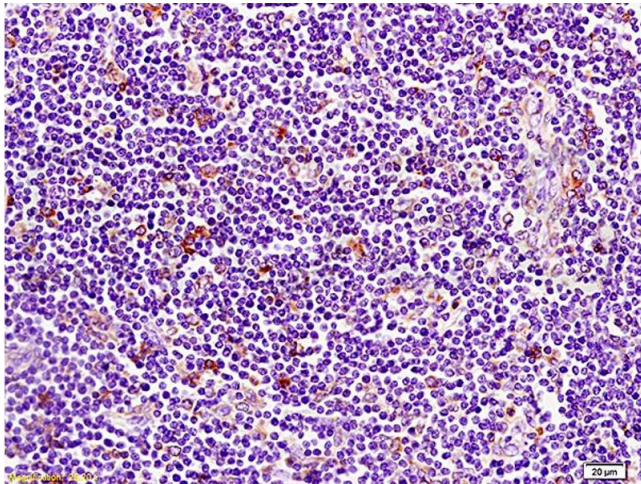
Preservative: ProClin

Precaution of Use: This product contains ProClin: a POISONOUS AND HAZARDOUS SUBSTANCE, which should be handled by trained staff only.

Storage: 4 °C,-20 °C

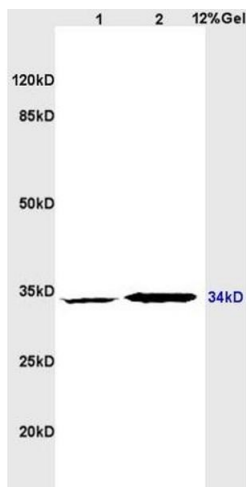
Storage Comment: Shipped at 4°C. Store at -20°C for one year. Avoid repeated freeze/thaw cycles.

Expiry Date: 12 months



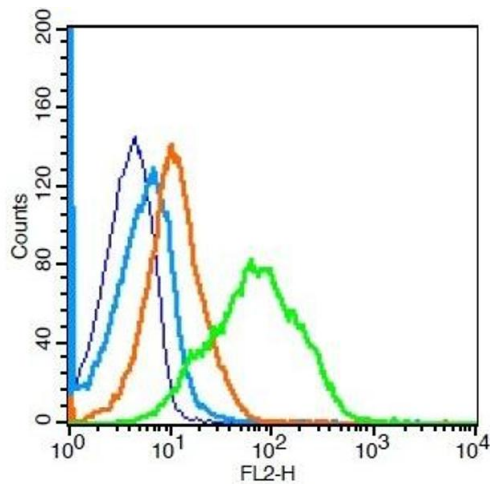
### Immunohistochemistry

**Image 1.** Formalin-fixed and paraffin embedded human pancreatic cancer tissue labeled with Anti-CD1A Polyclonal Antibody, Unconjugated (ABIN702700) at 1:200 followed by conjugation to the secondary antibody and DAB staining



### SDS-PAGE

**Image 2.** Lane 1: rat brain lysates Lane 2: rat heart lysates probed with Anti CD1A Polyclonal Antibody, Unconjugated (ABIN702700) at 1:200 in 4 °C. Followed by conjugation to secondary antibody at 1:3000 90min in 37 °C. Predicted band 34kD. Observed band size: 34kD.



### Flow Cytometry

**Image 3.** Mouse spleen cells probed with CD1d1 Polyclonal Antibody, Unconjugated at 1:100 for 30 minutes followed by incubation with a PE Conjugated secondary (green) for 30 minutes compared to control cells (blue), secondary only (light blue) and isotype control (orange).