

Datasheet for ABIN702805  
**anti-CTR9 antibody (AA 751-850)**[Go to Product page](#)

## 1 Image

## Overview

Quantity:	100 µL
Target:	CTR9
Binding Specificity:	AA 751-850
Reactivity:	Human
Host:	Rabbit
Clonality:	Polyclonal
Conjugate:	This CTR9 antibody is un-conjugated
Application:	Western Blotting (WB), ELISA, Immunofluorescence (Cultured Cells) (IF (cc)), Immunofluorescence (Paraffin-embedded Sections) (IF (p)), Immunohistochemistry (Paraffin- embedded Sections) (IHC (p)), Immunohistochemistry (Frozen Sections) (IHC (fro))

## Product Details

Immunogen:	KLH conjugated synthetic peptide derived from human CTR9
Isotype:	IgG
Cross-Reactivity:	Human
Predicted Reactivity:	Mouse,Rat,Dog,Cow,Sheep,Pig,Horse,Chicken
Purification:	Purified by Protein A.

## Target Details

Target:	CTR9
---------	------

## Target Details

Alternative Name:	CTR9 ( <a href="#">CTR9 Products</a> )
Background:	<p>Synonyms: SH2BP1, TSBP, Ctr 9, Ctr9, Ctr9 Paf1/RNA polymerase II complex component, homolog, p150, RNA polymerase associated protein CTR9 homolog, SH2 binding phosphoprotein, SH2 domain binding protein 1 tetratricopeptide repeat containing, TPR containing SH2 binding phosphoprotein, Paf1/RNA polymerase II complex component homolog Ctr9, SH2 domain binding protein 1, CTR9_HUMAN.</p> <p>Background: CTR9 is a component of the PAF (polymerase-associated factor) complex which interacts with histone-modifying enzymes and RNA polymerase II and plays a role in a number of transcription-related processes. Recent studies show that CTR9 can regulate IL-6-responsive gene transcription by influencing histone methylation.</p>
Gene ID:	9646
Pathways:	<a href="#">Cellular Response to Molecule of Bacterial Origin</a> , <a href="#">Stem Cell Maintenance</a>

## Application Details

Application Notes:	WB 1:300-5000 ELISA 1:500-1000 IHC-P 1:200-400 IHC-F 1:100-500 IF(IHC-P) 1:50-200 IF(IHC-F) 1:50-200 IF(ICC) 1:50-200
Restrictions:	For Research Use only

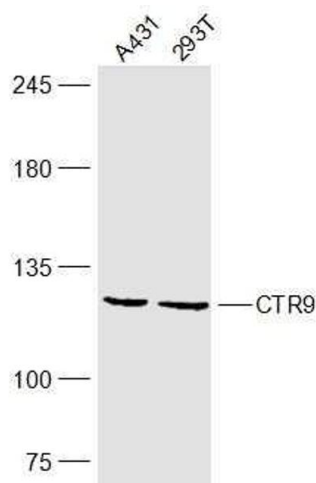
## Handling

Format:	Liquid
Concentration:	1 µg/µL
Buffer:	0.01M TBS( pH 7.4) with 1 % BSA, 0.02 % Proclin300 and 50 % Glycerol.
Preservative:	ProClin
Precaution of Use:	This product contains ProClin: a POISONOUS AND HAZARDOUS SUBSTANCE, which should be handled by trained staff only.
Storage:	4 °C,-20 °C

Handling

Storage Comment:	Shipped at 4°C. Store at -20°C for one year. Avoid repeated freeze/thaw cycles.
Expiry Date:	12 months

Images



Western Blotting

**Image 1.** Lane 1: A431 lysates Lane 2: 293T lysates probed with CTR9 Polyclonal Antibody, Unconjugated at 1:300 dilution and 4°C overnight incubation. Followed by conjugated secondary antibody incubation at 1:10000 for 60 min at 37°C.