



Datasheet for ABIN702835
anti-GPR15 antibody (AA 51-150)



[Go to Product page](#)

5 Images

1 Publication

Overview

Quantity:	100 µL
Target:	GPR15
Binding Specificity:	AA 51-150
Reactivity:	Human, Mouse, Rat
Host:	Rabbit
Clonality:	Polyclonal
Conjugate:	This GPR15 antibody is un-conjugated
Application:	Western Blotting (WB), ELISA, Immunohistochemistry (Paraffin-embedded Sections) (IHC (p)), Immunofluorescence (Cultured Cells) (IF (cc)), Immunofluorescence (Paraffin-embedded Sections) (IF (p)), Immunocytochemistry (ICC), Immunohistochemistry (Frozen Sections) (IHC (fro))

Product Details

Immunogen:	KLH conjugated synthetic peptide derived from human GPR15
Isotype:	IgG
Cross-Reactivity:	Human, Mouse, Rat
Predicted Reactivity:	Dog,Horse,Rabbit
Purification:	Purified by Protein A.

Target Details

Target:	GPR15
---------	-------

Target Details

Alternative Name: GPR15 ([GPR15 Products](#))

Background: Synonyms: BOB, G-protein coupled receptor 15, Brother of Bonzo, GPR15
Background: GPR15 is a probable chemokine receptor, its expression has been reported in CD4(+) T lymphocytes, alveolar macrophages, and the basal surface of the small intestinal epithelium. ESTs have been isolated from normal brain and kidney cancer libraries. This gene encodes a G protein-coupled receptor that acts as a chemokine receptor for human immunodeficiency virus type 1 and 2. The encoded protein localizes to the cell membrane. [provided by RefSeq, Nov 2012].

Gene ID: 2838

UniProt: [P49685](#)

Application Details

Application Notes: WB 1:300-5000
ELISA 1:500-1000
IHC-P 1:200-400
IHC-F 1:100-500
IF(IHC-P) 1:50-200
IF(IHC-F) 1:50-200
IF(ICC) 1:50-200
ICC 1:100-500

Restrictions: For Research Use only

Handling

Format: Liquid

Concentration: 1 µg/µL

Buffer: 0.01M TBS(pH 7.4) with 1 % BSA, 0.02 % Proclin300 and 50 % Glycerol.

Preservative: ProClin

Precaution of Use: This product contains ProClin: a POISONOUS AND HAZARDOUS SUBSTANCE, which should be handled by trained staff only.

Storage: 4 °C, -20 °C

Storage Comment: Shipped at 4°C. Store at -20°C for one year. Avoid repeated freeze/thaw cycles.

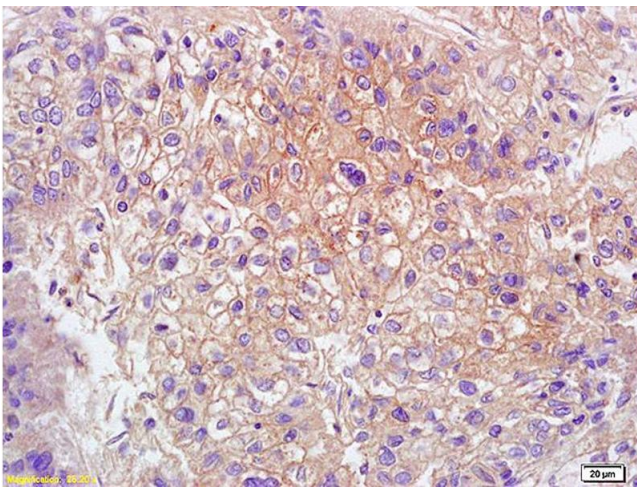
Handling

Expiry Date: 12 months

Publications

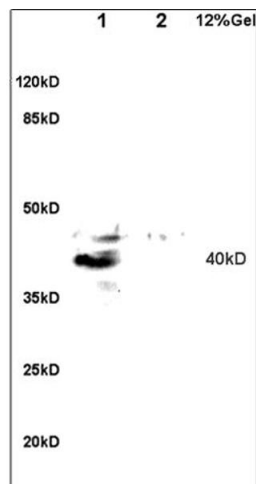
Product cited in: Fischer, Zundler, Atreya, Rath, Voskens, Hirschmann, López-Posadas, Watson, Becker, Schuler, Neufert, Atreya, Neurath: "Differential effects of ?4?7 and GPR15 on homing of effector and regulatory T cells from patients with UC to the inflamed gut in vivo." in: **Gut**, (2015) ([PubMed](#)).

Images



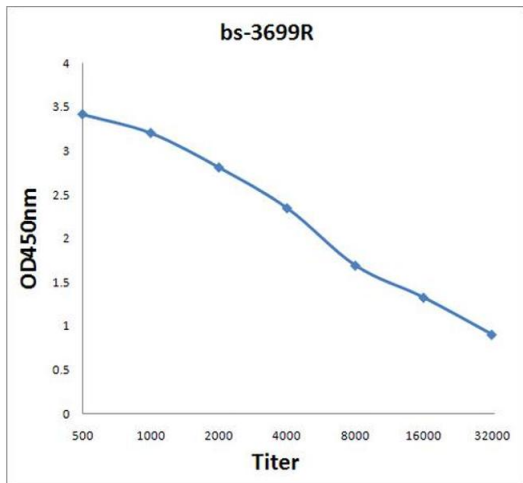
Immunohistochemistry

Image 1. L1 human colon carcinoma lysates L2 rat brain lysates probed with Anti GPR15 Polyclonal Antibody, Unconjugated (ABIN702835) at 1:200 overnight at 4 °C. Followed by conjugation to secondary antibody at 1:3000 for 90 min at 37 °C. Predicted band 40kD. Observed band size:40kD.



SDS-PAGE

Image 2. Formalin-fixed and paraffin embedded human lung carcinoma labeled with Anti-GPR15 Polyclonal Antibody, Unconjugated (ABIN702835) at 1:200 followed by conjugation to the secondary antibody and DAB staining.



ELISA

Image 3. Antigen: 0.2 µg/100 µL Primary: Antiserum, 1:500, 1:1000, 1:2000, 1:4000, 1:8000, 1:16000, 1:32000; Secondary: HRP conjugated Goat-Anti-Rabbit IgG at 1: 5000; TMB staining; Read the data in MicroplateReader by 450

Please check the [product details page](#) for more images. Overall 5 images are available for ABIN702835.