



[Go to Product page](#)

Datasheet for ABIN703135  
**anti-Talin antibody (pSer425)**

5 Images

Overview

Quantity:	100 µL
Target:	Talin (TLN)
Binding Specificity:	pSer425
Reactivity:	Human
Host:	Rabbit
Clonality:	Polyclonal
Conjugate:	This Talin antibody is un-conjugated
Application:	Immunofluorescence (Cultured Cells) (IF (cc)), Immunofluorescence (Paraffin-embedded Sections) (IF (p)), ELISA, Immunohistochemistry (Frozen Sections) (IHC (fro)), Immunocytochemistry (ICC), Immunohistochemistry (Paraffin-embedded Sections) (IHC (p))

Product Details

Immunogen:	KLH conjugated synthetic phosphopeptide derived from human Talin around the phosphorylation site of Ser425
Isotype:	IgG
Specificity:	This antibody will recognize Talin-2 when phosphorylated at Ser428
Cross-Reactivity:	Human
Predicted Reactivity:	Mouse,Rat,Dog,Cow,Pig,Horse,Chicken,Rabbit
Purification:	Purified by Protein A.

## Target Details

---

Target:	Talin (TLN)
Alternative Name:	Talin ( <a href="#">TLN Products</a> )
Background:	Synonyms: TLN, ILWEQ, Talin-1, TLN1, KIAA1027 Background: Probably involved in connections of major cytoskeletal structures to the plasma membrane. High molecular weight cytoskeletal protein concentrated at regions of cell-substratum contact and, in lymphocytes, at cell-cell contacts (By similarity).
Gene ID:	7094
UniProt:	<a href="#">Q9Y490</a>

## Application Details

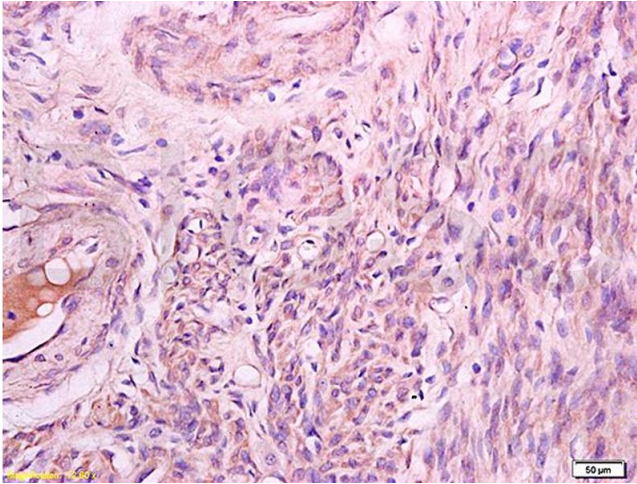
---

Application Notes:	ELISA 1:500-1000 IHC-P 1:200-400 IHC-F 1:100-500 IF(IHC-P) 1:50-200 IF(IHC-F) 1:50-200 IF(ICC) 1:50-200 ICC 1:100-500
Restrictions:	For Research Use only

## Handling

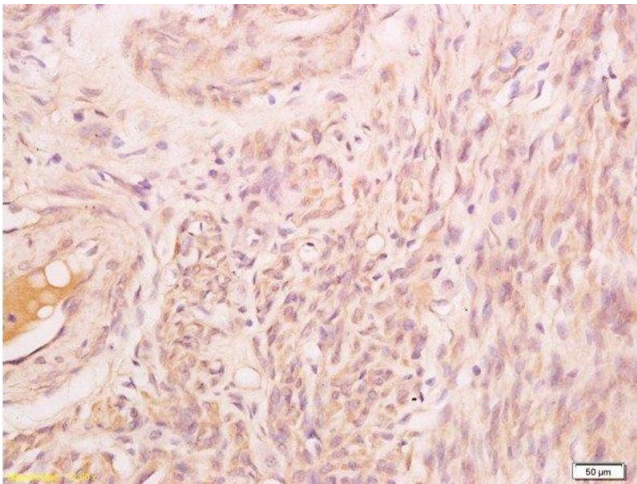
---

Format:	Liquid
Concentration:	1 µg/µL
Buffer:	0.01M TBS( pH 7.4) with 1 % BSA, 0.02 % Proclin300 and 50 % Glycerol.
Preservative:	ProClin
Precaution of Use:	This product contains ProClin: a POISONOUS AND HAZARDOUS SUBSTANCE, which should be handled by trained staff only.
Storage:	4 °C,-20 °C
Storage Comment:	Shipped at 4°C. Store at -20°C for one year. Avoid repeated freeze/thaw cycles.
Expiry Date:	12 months



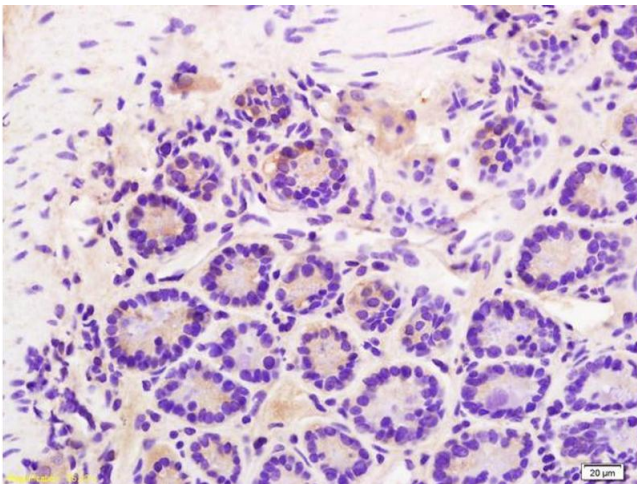
#### Immunohistochemistry

**Image 1.** Formalin-fixed and paraffin embedded human lung carcinoma labeled with Rabbit Anti Phospho-Talin (Ser425) Polyclonal Antibody, Unconjugated (ABIN703135) at 1:200 followed by conjugation to the secondary antibody and DAB staining



#### Immunohistochemistry (Paraffin-embedded Sections)

**Image 2.** Formalin-fixed and paraffin embedded human endometrium carcinoma labeled with Rabbit Anti Phospho-Talin (Ser425) Polyclonal Antibody, Unconjugated at 1:200 followed by conjugation to the secondary antibody and DAB staining



#### Immunohistochemistry

**Image 3.** Formalin-fixed and paraffin embedded mouse intestine labeled with Rabbit Anti Phospho-Talin (Ser425) Polyclonal Antibody, Unconjugated (ABIN703135) at 1:200 followed by conjugation to the secondary antibody and DAB staining

Please check the [product details page](#) for more images. Overall 5 images are available for ABIN703135.