



[Go to Product page](#)

Datasheet for ABIN703270  
**anti-PKC delta antibody (pTyr313)**

1 Image

### Overview

Quantity:	100 µL
Target:	PKC delta (PKCd)
Binding Specificity:	pTyr313
Reactivity:	Human, Mouse, Rat
Host:	Rabbit
Clonality:	Polyclonal
Conjugate:	This PKC delta antibody is un-conjugated
Application:	Western Blotting (WB), ELISA, Immunofluorescence (Cultured Cells) (IF (cc)), Immunofluorescence (Paraffin-embedded Sections) (IF (p)), Immunohistochemistry (Paraffin-embedded Sections) (IHC (p)), Flow Cytometry (FACS), Immunohistochemistry (Frozen Sections) (IHC (fro))

### Product Details

Immunogen:	KLH conjugated synthetic phosphopeptide derived from human PKC delta around the phosphorylation site of Tyr313
Isotype:	IgG
Specificity:	This phosphorylation site is homologous to that of Tyr311 in Mouse and Rat.
Cross-Reactivity:	Human, Mouse, Rat
Purification:	Purified by Protein A.

## Target Details

---

Target:	PKC delta (PKCd)
Alternative Name:	PKC delta ( <a href="#">PKCd Products</a> )
Background:	<p>Synonyms: MAY1, PKCD, ALPS3, CVID9, nPKC-delta, Protein kinase C delta type, Tyrosine-protein kinase PRKCD, PRKCD</p> <p>Background: Protein kinase C (PKC) is a family of serine- and threonine-specific protein kinases that can be activated by calcium and the second messenger diacylglycerol. PKC family members phosphorylate a wide variety of protein targets and are known to be involved in diverse cellular signaling pathways. PKC family members also serve as major receptors for phorbol esters, a class of tumor promoters. Each member of the PKC family has a specific expression profile and is believed to play distinct roles in cells. The protein encoded by this gene is one of the PKC family members. Studies both in human and mice demonstrate that this kinase is involved in B cell signaling and in the regulation of growth, apoptosis, and differentiation of a variety of cell types. Alternatively spliced transcript variants encoding the same protein have been observed. [provided by RefSeq, Jul 2008].</p>
Gene ID:	5580
UniProt:	<a href="#">Q05655</a>
Pathways:	<a href="#">Interferon-gamma Pathway</a> , <a href="#">EGFR Signaling Pathway</a> , <a href="#">Neurotrophin Signaling Pathway</a> , <a href="#">Thyroid Hormone Synthesis</a> , <a href="#">Regulation of Actin Filament Polymerization</a> , <a href="#">Carbohydrate Homeostasis</a> , <a href="#">Myometrial Relaxation and Contraction</a> , <a href="#">M Phase</a> , <a href="#">G-protein mediated Events</a> , <a href="#">Dicarboxylic Acid Transport</a> , <a href="#">Positive Regulation of Response to DNA Damage Stimulus</a> , <a href="#">Interaction of EGFR with phospholipase C-gamma</a> , <a href="#">Thromboxane A2 Receptor Signaling</a> , <a href="#">Lipid Metabolism</a>

## Application Details

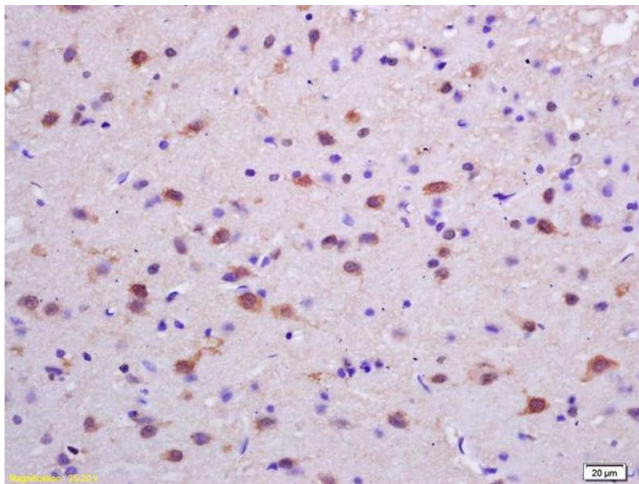
---

Application Notes:	WB 1:300-5000 ELISA 1:500-1000 FCM 1:20-100 IHC-P 1:200-400 IHC-F 1:100-500 IF(IHC-P) 1:50-200 IF(IHC-F) 1:50-200 IF(ICC) 1:50-200
Restrictions:	For Research Use only

## Handling

Format:	Liquid
Concentration:	1 µg/µL
Buffer:	0.01M TBS( pH 7.4) with 1 % BSA, 0.02 % Proclin300 and 50 % Glycerol.
Preservative:	ProClin
Precaution of Use:	This product contains ProClin: a POISONOUS AND HAZARDOUS SUBSTANCE, which should be handled by trained staff only.
Storage:	4 °C,-20 °C
Storage Comment:	Shipped at 4°C. Store at -20°C for one year. Avoid repeated freeze/thaw cycles.
Expiry Date:	12 months

## Images



### Immunohistochemistry

**Image 1.** Formalin-fixed and paraffin embedded rat brain labeled with Rabbit Anti phospho-PKC delta (Tyr311) Polyclonal Antibody, Unconjugated (ABIN703270) at 1:200 followed by conjugation to the secondary antibody and DAB staining