

Datasheet for ABIN703420
anti-CrkL antibody (pTyr251)

3 Images

[Go to Product page](#)

Overview

Quantity:	100 µL
Target:	CrkL (CRKL)
Binding Specificity:	pTyr251
Reactivity:	Human, Mouse
Host:	Rabbit
Clonality:	Polyclonal
Conjugate:	This CrkL antibody is un-conjugated
Application:	Western Blotting (WB), ELISA, Immunohistochemistry (Paraffin-embedded Sections) (IHC (p)), Immunofluorescence (Cultured Cells) (IF (cc)), Immunofluorescence (Paraffin-embedded Sections) (IF (p)), Immunohistochemistry (Frozen Sections) (IHC (fro))

Product Details

Immunogen:	KLH conjugated synthetic phosphopeptide derived from human Crkl around the phosphorylation site of Tyr251 [CA(p-Y)D]
Isotype:	IgG
Cross-Reactivity:	Human, Mouse
Predicted Reactivity:	Rat,Dog,Cow,Sheep,Pig,Horse,Rabbit
Purification:	Purified by Protein A.

Target Details

Target:	CrkL (CRKL)
---------	-------------

Target Details

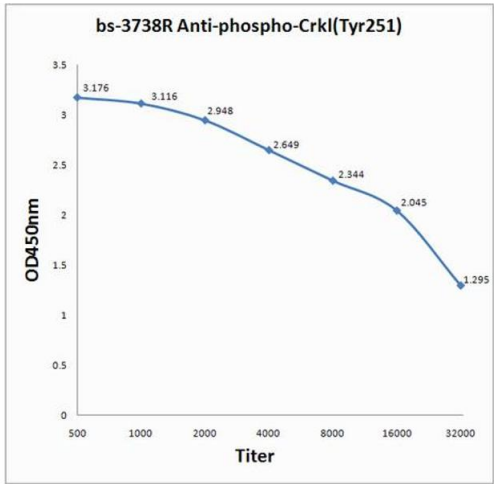
Alternative Name:	Crkl (CRKL Products)
Background:	<p>Synonyms: Crk-like protein, CRKL</p> <p>Background: Crkl is a 34 kDa adaptor protein which has been shown to activate the RAS and JUN kinase signalling pathways and transforms fibroblasts in a RAS dependant manner. Crkl is a substitute of BCR ABL tyrosine kinase. In addition, Crkl has oncogenic potential.</p>
Gene ID:	1399
UniProt:	P46109
Pathways:	Interferon-gamma Pathway , Neurotrophin Signaling Pathway , Signaling of Hepatocyte Growth Factor Receptor

Application Details

Application Notes:	<p>WB 1:300-5000</p> <p>ELISA 1:500-1000</p> <p>IHC-P 1:200-400</p> <p>IHC-F 1:100-500</p> <p>IF(IHC-P) 1:50-200</p> <p>IF(IHC-F) 1:50-200</p> <p>IF(ICC) 1:50-200</p>
Restrictions:	For Research Use only

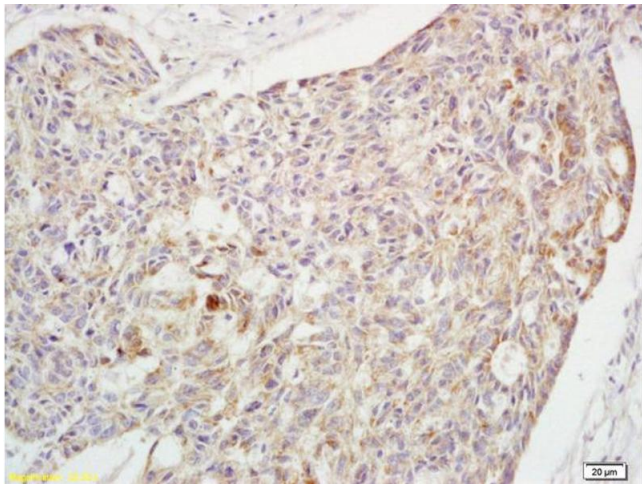
Handling

Format:	Liquid
Concentration:	1 µg/µL
Buffer:	0.01M TBS(pH 7.4) with 1 % BSA, 0.02 % Proclin300 and 50 % Glycerol.
Preservative:	ProClin
Precaution of Use:	This product contains ProClin: a POISONOUS AND HAZARDOUS SUBSTANCE, which should be handled by trained staff only.
Storage:	4 °C, -20 °C
Storage Comment:	Shipped at 4°C. Store at -20°C for one year. Avoid repeated freeze/thaw cycles.
Expiry Date:	12 months



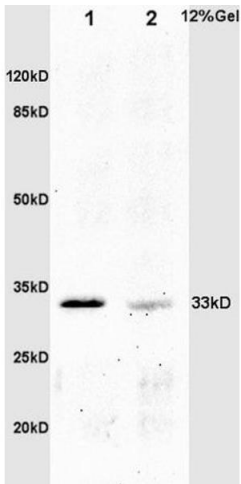
ELISA

Image 1. Antigen: 0.2 µg/100 µL Primary: Antiserum, 1:500, 1:1000, 1:2000, 1:4000, 1:8000, 1:16000, 1:32000; Secondary: HRP conjugated Goat-Anti-Rabbit IgG at 1: 5000; TMB staining; Read the data in MicroplateReader by 450



Immunohistochemistry

Image 2. Formalin-fixed and paraffin embedded human rectal carcinoma labeled with Rabbit Anti phospho-Crk(Tyr251) Polyclonal Antibody, Unconjugated (ABIN703420) at 1:200 followed by conjugation to the secondary antibody and DAB staining



SDS-PAGE

Image 3. L1 mouse embryo lysates L2 mouse intestine lysates probed with Anti phospho-Crk(Tyr251) Polyclonal Antibody, Unconjugated (ABIN703420) at 1:200 overnight at 4 °C. Followed by conjugation to secondary antibody at 1:3000 for 90 min at 37 °C. Predicted band 33kD. Observed band size:33kD.