

Datasheet for ABIN7035620
S100B ELISA Kit[Go to Product page](#)

1 Image

Overview

Quantity:	96 tests
Target:	S100B
Reactivity:	Human
Method Type:	Sandwich ELISA
Detection Range:	0.625 ng/mL - 10 ng/mL
Minimum Detection Limit:	0.625 ng/mL
Application:	ELISA

Product Details

Purpose:	The kit is an instant sandwich enzyme immunoassay for in vitro quantitative measurement in various sample types.
Sample Type:	Cell Culture Supernatant, Cell Lysate, Plasma, Serum, Tissue Homogenate
Analytical Method:	Quantitative
Detection Method:	Colorimetric
Specificity:	This assay has high sensitivity and excellent specificity for detection of S100 Calcium Binding Protein B.
Sensitivity:	0.21 ng/mL
Grade:	Instant
Components:	<ul style="list-style-type: none">• Pre-coated, ready to use 96-well strip plate, flat bottom• Plate sealer for 96 wells

Product Details

- Reference Standard
- Standard Diluent
- Detection Reagent A
- Detection Reagent B
- Assay Diluent A
- Assay Diluent B
- Reagent Diluent (if Detection Reagent is lyophilized)
- TMB Substrate
- Stop Solution
- Wash Buffer (30 x concentrate)
- Instruction manual

Target Details

Target:	S100B
Alternative Name:	S100 Calcium Binding Protein B (S100B Products)
Background:	S100-B, NEF, S100Beta, S-100 protein subunit beta
Pathways:	Regulation of Muscle Cell Differentiation , Positive Regulation of Immune Effector Process , Toll-Like Receptors Cascades , Regulation of long-term Neuronal Synaptic Plasticity , S100 Proteins

Application Details

Sample Volume:	100 µL
Assay Time:	1.5 h
Plate:	Pre-coated
Protocol:	<ol style="list-style-type: none">1. Prepare all reagents, samples and standards,2. Add 100µL standard or sample to each well. Incubate 30 minutes at 37 °C,3. Aspirate and add 100µL prepared Detection Reagent A. Incubate 30 minutes at 37 °C,4. Aspirate and wash 5 times,5. Add 100µL prepared Detection Reagent B. Incubate 10 minutes at 37°C,6. Aspirate and wash 5 times,7. Add 90µL Substrate Solution. Incubate 10-20 minutes at 37 °C,8. Add 50µL Stop Solution. Read at 450nm immediately.
Reagent Preparation:	<ol style="list-style-type: none">1. Bring all kit components and samples to room temperature (18-25 °C) before use. If the kit will not be used up in one time, please only take out strips and reagents for present experiment, and leave the remaining strips and reagents in required condition.2. Standard - Reconstitute the Standards with 0.5mL of Standard Diluent, kept for 10 minutes at

- room temperature, shake gently (not to foam). The concentration of the standards is as follows: (1) 0ng/mL, (2) 0.625ng/mL, (3) 1.25ng/mL, (4) 2.5ng/mL, (5) 5ng/mL, (6) 10ng/mL.
3. Wash Solution - Dilute 20 mL of Wash Solution concentrate (30x) with 580 mL of deionized or distilled water to prepare 600 mL of Wash Solution (1x).
 4. TMB substrate - Aspirate the needed dosage of the solution with sterilized tips and do not dump the residual solution into the vial again.

Note:

1. Making serial dilution in the wells directly is not permitted.
2. Prepare standard within 15 minutes before assay. Please do not dissolve the reagents at 37 °C directly.
3. Please carefully reconstitute Standards or working Detection Reagent A and B according to the instruction, and avoid foaming and mix gently until the crystals are completely dissolved. To minimize imprecision caused by pipetting, use small volumes and ensure that pipettors are calibrated. It is recommended to suck more than 10µL for once pipetting.
4. The reconstituted Standards, Detection Reagent A and Detection Reagent B can be used only once.
5. Prepare Substrate working Solution within 15 minutes before assay.
6. If crystals have formed in the Wash Solution concentrate (30x), warm to room temperature and mix gently until the crystals are completely dissolved.
7. Contaminated water or container for reagent preparation will influence the detection result.

Sample Preparation:

- It is recommended to use fresh samples without long storage, otherwise protein degradation and denaturation may occur in these samples, leading to false results. Samples should therefore be stored for a short period at 2 - 8 °C or aliquoted at -20 °C (≤1 month) or -80 °C (≤3 months). Repeated freeze-thaw cycles should be avoided. Prior to assay, the frozen samples should be slowly thawed and centrifuged to remove precipitates.
- If the sample type is not specified in the instructions, a preliminary test is necessary to determine compatibility with the kit.
- If a lysis buffer is used to prepare tissue homogenates or cell culture supernatant, there is a possibility of causing a deviation due to the introduced chemical substance. The recommended dilution factor is for reference only.
- Please estimate the concentration of the samples before performing the test. If the values are not in the range of the standard curve, the optimal sample dilution for the particular experiment has to be determined. Samples should then be diluted with PBS (pH = 7.0-7.2).

Assay Precision:

Intra-assay Precision (Precision within an assay): 3 samples with low, middle and high level of target were tested 20 times on one plate, respectively.

Inter-assay Precision (Precision between assays): 3 samples with low, middle and high level of target were tested on 3 different plates, 8 replicates in each plate.

$$CV(\%) = SD/mean \times 100$$

Intra-Assay: CV < 10%

Inter-Assay: CV < 12%

Application Details

Restrictions: For Research Use only

Handling

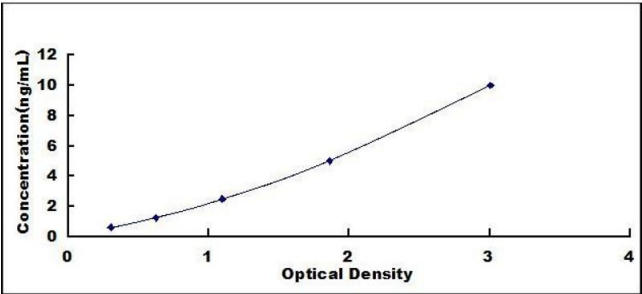
Storage: 4 °C/-20 ° C

Storage Comment:

1. For unopened kit: All reagents should be stored according to the labels on the vials. The Standard, Detection Reagent A, Detection Reagent B, and 96-well Strip Plate should be stored at -20 °C upon receipt, while the other reagents should be stored at 4 °C.
2. For opened kits: the remaining reagents must be stored according to the above storage conditions. In addition, please return the unused wells to the foil pouch containing the desiccant and seal the foil pouch with the zipper.

Expiry Date: 6 months

Images



ELISA

Image 1. Typical standard curve