

Datasheet for ABIN703571  
**anti-ARNTL antibody (AA 151-250)**[Go to Product page](#)

## 1 Image

## Overview

Quantity:	100 µL
Target:	ARNTL
Binding Specificity:	AA 151-250
Reactivity:	Human, Rat, Mouse
Host:	Rabbit
Clonality:	Polyclonal
Conjugate:	This ARNTL antibody is un-conjugated
Application:	Western Blotting (WB), ELISA, Flow Cytometry (FACS), Immunofluorescence (Cultured Cells) (IF (cc)), Immunofluorescence (Paraffin-embedded Sections) (IF (p)), Immunohistochemistry (Paraffin-embedded Sections) (IHC (p)), Immunohistochemistry (Frozen Sections) (IHC (fro))

## Product Details

Immunogen:	KLH conjugated synthetic peptide derived from human BMAL1
Isotype:	IgG
Cross-Reactivity:	Human, Mouse, Rat
Predicted Reactivity:	Dog,Cow,Sheep,Pig,Horse
Purification:	Purified by Protein A.

## Target Details

Target:	ARNTL
---------	-------

## Target Details

Alternative Name: BMAL1 ([ARNTL Products](#))

Background: Synonyms: ARNT like protein 1 brain and muscle, ARNTL, Aryl hydrocarbon receptor nuclear translocator like, Aryl hydrocarbon receptor nuclear translocator like protein 1, Aryl hydrocarbon receptor nuclear translocator-like protein 1, Basic helix loop helix PAS orphan MOP3, bHLH PAS protein JAP3, bHLHe5, BMAL 1, BMAL1c, Brain and muscle ARNT like 1, cycle, JAP 3, JAP3, Member of PAS protein 3, Member of PAS superfamily 3, MOP3, PAS domain-containing protein 3, PASD 3, PASD3, TIC.

Background: Component of the circadian clock oscillator which includes the CRY proteins, CLOCK or NPAS2, ARNTL or ARNTL2, CSNK1D and/or CSNK1E, TIMELESS and the PER proteins. Efficient DNA binding requires dimerization with another bHLH protein.

Heterodimerization with CLOCK is required for E-box-dependent transactivation, for CLOCK nuclear translocation and degradation, and, for phosphorylation of both CLOCK and ARNTL.

Interaction with PER and CRY proteins requires translocation to the nucleus. Interaction of the CLOCK-ARNTL heterodimer with PER or CRY inhibits transcription activation. Interacts with HSP90, with AHR in vitro, but not in vivo.

Gene ID: 406

Pathways: [Regulation of Lipid Metabolism by PPARalpha](#), [Protein targeting to Nucleus](#), [Warburg Effect](#)

## Application Details

Application Notes: WB 1:300-5000  
ELISA 1:500-1000  
FCM 1:20-100  
IHC-P 1:200-400  
IHC-F 1:100-500  
IF(IHC-P) 1:50-200  
IF(IHC-F) 1:50-200  
IF(ICC) 1:50-200

Restrictions: For Research Use only

## Handling

Format: Liquid

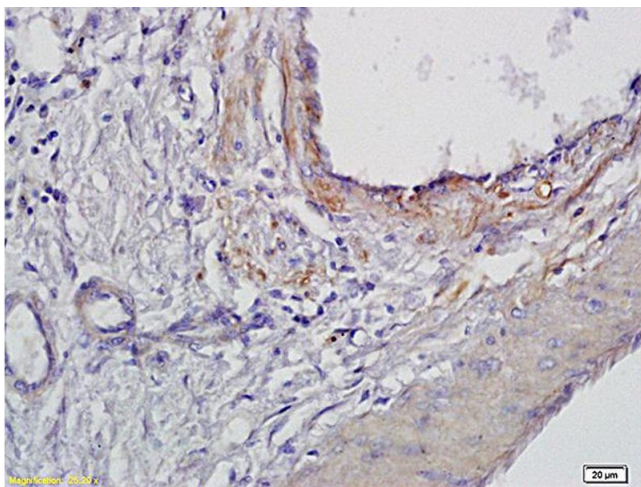
Concentration: 1 µg/µL

Buffer: 0.01M TBS( pH 7.4) with 1 % BSA, 0.02 % Proclin300 and 50 % Glycerol.

## Handling

Preservative:	ProClin
Precaution of Use:	This product contains ProClin: a POISONOUS AND HAZARDOUS SUBSTANCE, which should be handled by trained staff only.
Storage:	4 °C,-20 °C
Storage Comment:	Shipped at 4°C. Store at -20°C for one year. Avoid repeated freeze/thaw cycles.
Expiry Date:	12 months

## Images



### Immunohistochemistry

**Image 1.** Formalin-fixed and paraffin embedded human gastric cancer labeled with Anti BMAL1 Polyclonal Antibody, Unconjugated (ABIN703571) at 1:300 followed by conjugation to the secondary antibody and DAB staining