

Datasheet for ABIN703646  
**anti-CrkL antibody (AA 201-303)**[Go to Product page](#)

## 2 Images

## Overview

Quantity:	100 µL
Target:	CrkL (CRKL)
Binding Specificity:	AA 201-303
Reactivity:	Mouse
Host:	Rabbit
Clonality:	Polyclonal
Conjugate:	This CrkL antibody is un-conjugated
Application:	ELISA, Immunohistochemistry (Paraffin-embedded Sections) (IHC (p)), Immunofluorescence (Paraffin-embedded Sections) (IF (p)), Immunofluorescence (Cultured Cells) (IF (cc)), Immunohistochemistry (Frozen Sections) (IHC (fro))

## Product Details

Immunogen:	KLH conjugated synthetic peptide derived from human Crkl
Isotype:	IgG
Cross-Reactivity:	Mouse
Predicted Reactivity:	Human,Rat,Cow,Pig,Horse,Rabbit
Purification:	Purified by Protein A.

## Target Details

Target:	CrkL (CRKL)
---------	-------------

## Target Details

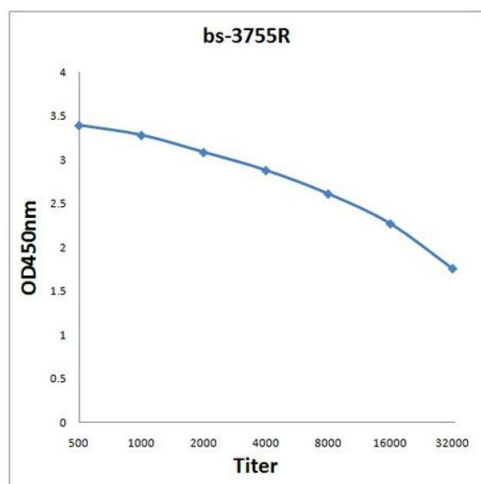
Alternative Name:	Crkl ( <a href="#">CRKL Products</a> )
Background:	<p>Synonyms: Crk-like protein, CRKL</p> <p>Background: Crkl is a 34 kDa adaptor protein which has been shown to activate the RAS and JUN kinase signalling pathways and transforms fibroblasts in a RAS dependant manner. Crkl is a substitute of BCR ABL tyrosine kinase. In addition, Crkl has oncogenic potential.</p>
Gene ID:	1399
UniProt:	<a href="#">P46109</a>
Pathways:	<a href="#">Interferon-gamma Pathway</a> , <a href="#">Neurotrophin Signaling Pathway</a> , <a href="#">Signaling of Hepatocyte Growth Factor Receptor</a>

## Application Details

Application Notes:	<p>ELISA 1:500-1000</p> <p>IHC-P 1:200-400</p> <p>IHC-F 1:100-500</p> <p>IF(IHC-P) 1:50-200</p> <p>IF(IHC-F) 1:50-200</p> <p>IF(ICC) 1:50-200</p>
Restrictions:	For Research Use only

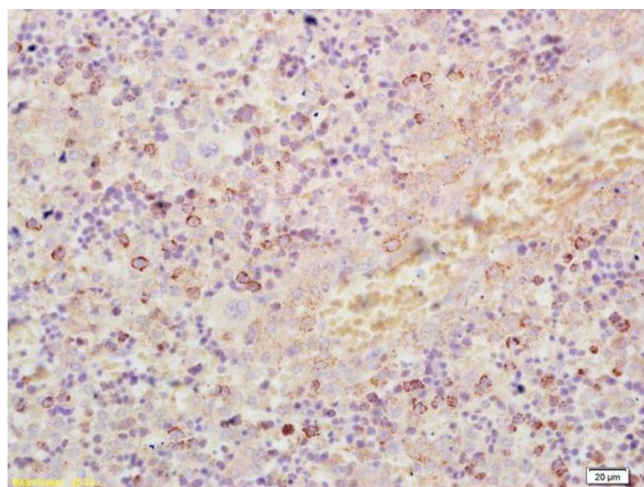
## Handling

Format:	Liquid
Concentration:	1 µg/µL
Buffer:	0.01M TBS( pH 7.4) with 1 % BSA, 0.02 % Proclin300 and 50 % Glycerol.
Preservative:	ProClin
Precaution of Use:	This product contains ProClin: a POISONOUS AND HAZARDOUS SUBSTANCE, which should be handled by trained staff only.
Storage:	4 °C,-20 °C
Storage Comment:	Shipped at 4°C. Store at -20°C for one year. Avoid repeated freeze/thaw cycles.
Expiry Date:	12 months



### ELISA

**Image 1.** Antigen: 0.2 µg/100 µL Primary: Antiserum, 1:500, 1:1000, 1:2000, 1:4000, 1:8000, 1:16000, 1:32000; Secondary: HRP conjugated Goat-Anti-Rabbit IgG at 1: 5000; TMB staining; Read the data in MicroplateReader by 450



### Immunohistochemistry

**Image 2.** Formalin-fixed and paraffin embedded mouse embryo labeled with Anti-Crkl Polyclonal Antibody, Unconjugated (ABIN703646) at 1:200, followed by conjugation to the secondary antibody and DAB staining