

Datasheet for ABIN703706
anti-s100a4 antibody (AA 15-101)**7** Images**1** Publication[Go to Product page](#)

Overview

Quantity:	100 µL
Target:	s100a4 (S100A4)
Binding Specificity:	AA 15-101
Reactivity:	Human, Mouse, Rat, Rabbit
Host:	Rabbit
Clonality:	Polyclonal
Conjugate:	This s100a4 antibody is un-conjugated
Application:	Western Blotting (WB), ELISA, Flow Cytometry (FACS), Immunohistochemistry (Paraffin-embedded Sections) (IHC (p)), Immunofluorescence (Cultured Cells) (IF (cc)), Immunofluorescence (Paraffin-embedded Sections) (IF (p)), Immunohistochemistry (Frozen Sections) (IHC (fro))

Product Details

Immunogen:	KLH conjugated synthetic peptide derived from human S100A4
Isotype:	IgG
Cross-Reactivity:	Human, Mouse, Rabbit, Rat
Predicted Reactivity:	Dog,Cow,Pig,Horse,Guinea Pig
Purification:	Purified by Protein A.

Target Details

Target:	s100a4 (S100A4)
---------	-----------------

Target Details

Alternative Name:	S100A4 (S100A4 Products)
Background:	<p>Synonyms: 42A, 18A2, CAPL, FSP1, MTS1, P9KA, PEL98, Protein S1-A4, Calvasculin, Metastasin, Placental calcium-binding protein, Protein Mts1, S1 calcium-binding protein A4, S1A4</p> <p>Background: S100 belongs to the family of calcium binding proteins such as calmodulin and troponin C. S100A is composed of an alpha and beta chain whereas S100B is composed of two beta chains. S100 protein is also expressed in the antigen presenting cells such as the Langerhans cells in skin and interdigitating reticulum cells in the paracortex of lymph nodes. S100A4 has been implicated in motility, invasion and tubulin polymerization. It is also involved in tumor metastasis.</p>
Gene ID:	6275
UniProt:	P26447
Pathways:	S100 Proteins

Application Details

Application Notes:	WB 1:300-5000 ELISA 1:500-1000 FCM 1:20-100 IHC-P 1:200-400 IHC-F 1:100-500 IF(IHC-P) 1:50-200 IF(IHC-F) 1:50-200 IF(ICC) 1:50-200
Restrictions:	For Research Use only

Handling

Format:	Liquid
Concentration:	1 µg/µL
Buffer:	0.01M TBS(pH 7.4) with 1 % BSA, 0.02 % Proclin300 and 50 % Glycerol.
Preservative:	ProClin
Precaution of Use:	This product contains ProClin: a POISONOUS AND HAZARDOUS SUBSTANCE, which should be handled by trained staff only.

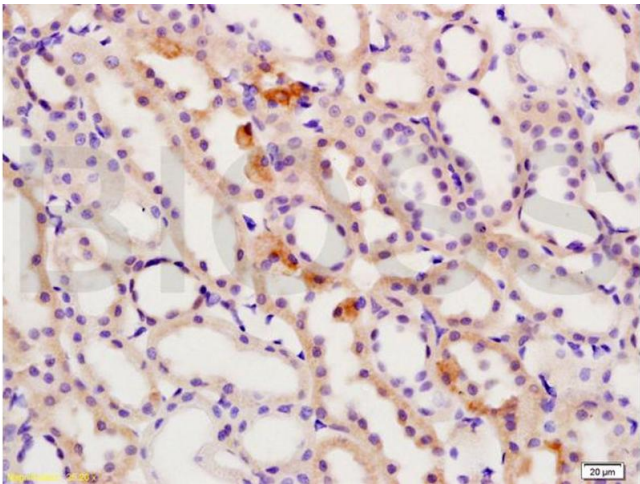
Handling

Storage:	4 °C,-20 °C
Storage Comment:	Shipped at 4°C. Store at -20°C for one year. Avoid repeated freeze/thaw cycles.
Expiry Date:	12 months

Publications

Product cited in:	Liu, Hu, Tang, Tang, Xia, Wu, Yin, Wang, He, Xie, Zhou: "Homemade-device-induced negative pressure promotes wound healing more efficiently than VSD-induced positive pressure by regulating inflammation, proliferation and remodeling." in: International journal of molecular medicine , Vol. 39, Issue 4, pp. 879-888, (2017) (PubMed).
-------------------	---

Images



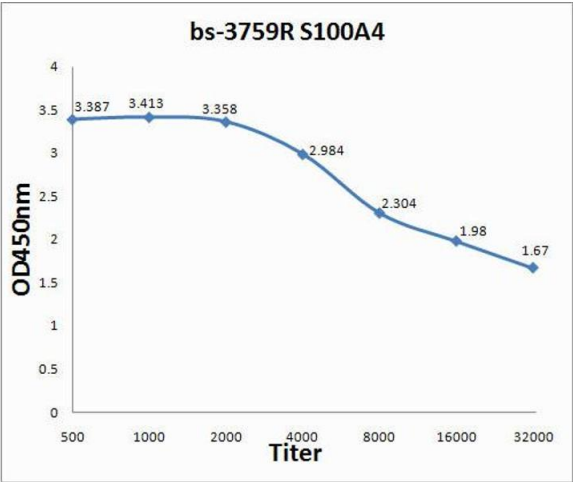
Immunohistochemistry

Image 1. Formalin-fixed and paraffin embedded rat kidney labeled with Rabbit Anti S100A4 Polyclonal Antibody, Unconjugated (ABIN703706) at 1:200 followed by conjugation to the secondary antibody and DAB staining



ELISA

Image 2. Formalin-fixed and paraffin embedded mouse small intestine labeled with Rabbit Anti S100A4 Polyclonal Antibody, Unconjugated (ABIN703706) at 1:200 followed by conjugation to the secondary antibody and DAB staining



ELISA

Image 3. Antigen: 0.2 µg/100 µL Primary: Antiserum, 1:500, 1:1000, 1:2000, 1:4000, 1:8000, 1:16000, 1:32000; Secondary: HRP conjugated Goat-Anti-Rabbit IgG at 1: 5000; TMB staining; Read the data in MicroplateReader by 450

Please check the [product details page](#) for more images. Overall 7 images are available for ABIN703706.