



[Go to Product page](#)

Datasheet for ABIN704186
anti-CD21 antibody (AA 981-1092)

4 Images

Overview

Quantity:	100 µL
Target:	CD21 (CR2)
Binding Specificity:	AA 981-1092
Reactivity:	Human, Rat
Host:	Rabbit
Clonality:	Polyclonal
Conjugate:	This CD21 antibody is un-conjugated
Application:	Flow Cytometry (FACS), Western Blotting (WB), ELISA, Immunohistochemistry (Paraffin-embedded Sections) (IHC (p))

Product Details

Immunogen:	KLH conjugated synthetic peptide derived from human CR2
Isotype:	IgG
Cross-Reactivity:	Human, Rat
Predicted Reactivity:	Mouse
Purification:	Purified by Protein A.

Target Details

Target:	CD21 (CR2)
Alternative Name:	CD21/EBV receptor (CR2 Products)

Target Details

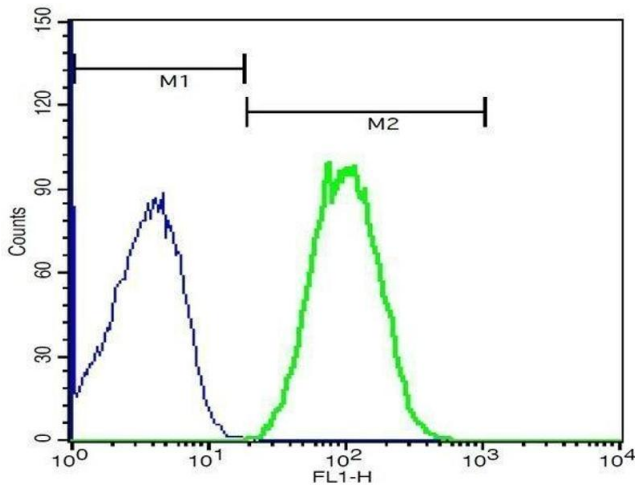
Background:	Synonyms: CR, C3DR, CD21, CVID7, SLEB9, Complement receptor type 2, Cr2, Complement C3d receptor, Epstein-Barr virus receptor, EBV receptor Background: Receptor for complement C3Dd, for the Epstein-Barr virus on human B-cells and T-cells and for HNRPU. Participates in B lymphocytes activation.
Gene ID:	1380
UniProt:	P20023
Pathways:	Complement System

Application Details

Application Notes:	WB 1:300-5000 ELISA 1:500-1000 FCM 1:20-100 IHC-P 1:200-400
Restrictions:	For Research Use only

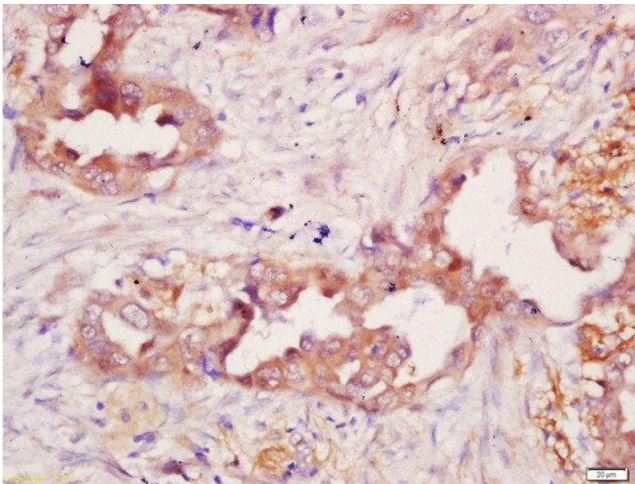
Handling

Format:	Liquid
Concentration:	1 µg/µL
Buffer:	0.01M TBS(pH 7.4) with 1 % BSA, 0.02 % Proclin300 and 50 % Glycerol.
Preservative:	ProClin
Precaution of Use:	This product contains ProClin: a POISONOUS AND HAZARDOUS SUBSTANCE, which should be handled by trained staff only.
Storage:	4 °C,-20 °C
Storage Comment:	Shipped at 4°C. Store at -20°C for one year. Avoid repeated freeze/thaw cycles.
Expiry Date:	12 months



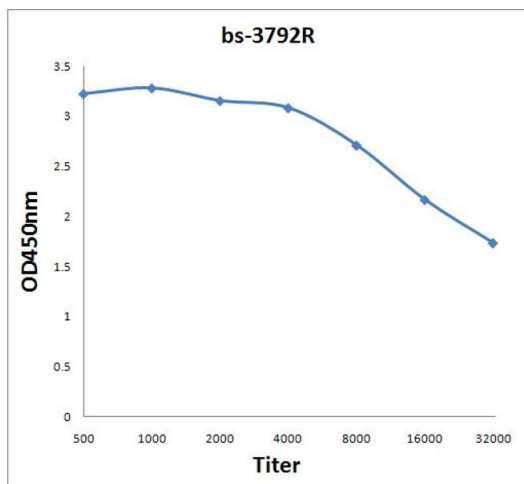
Flow Cytometry

Image 1. Mouse splenocyte probed with Rabbit Anti-CD21/EBV receptor Polyclonal Antibody, FITC Conjugated .



Immunohistochemistry (Paraffin-embedded Sections)

Image 2. Formalin-fixed and paraffin embedded human lung carcinoma labeled with Anti-Polyclonal Antibody, Unconjugated 1:200 followed by conjugation to the secondary antibody and DAB staining



ELISA

Image 3. Antigen: 0.2 µg/100 µL Primary: Antiserum, 1:500, 1:1000, 1:2000, 1:4000, 1:8000, 1:16000, 1:32000; Secondary: HRP conjugated Goat Anti-Rabbit IgG at 1: 5000; TMB staining Read the data in MicroplateReader by 450nm.

Please check the [product details page](#) for more images. Overall 4 images are available for ABIN704186.