

Datasheet for ABIN704216
anti-ANO1 antibody (AA 151-250)

3 Images

[Go to Product page](#)

Overview

Quantity:	100 µL
Target:	ANO1
Binding Specificity:	AA 151-250
Reactivity:	Human, Mouse, Rat
Host:	Rabbit
Clonality:	Polyclonal
Conjugate:	This ANO1 antibody is un-conjugated
Application:	Western Blotting (WB), ELISA, Immunohistochemistry (Paraffin-embedded Sections) (IHC (p)), Immunofluorescence (Paraffin-embedded Sections) (IF (p)), Immunofluorescence (Cultured Cells) (IF (cc)), Immunohistochemistry (Frozen Sections) (IHC (fro))

Product Details

Immunogen:	KLH conjugated synthetic peptide derived from human TMEM16A
Isotype:	IgG
Cross-Reactivity:	Human, Mouse, Rat
Predicted Reactivity:	Dog,Cow,Pig,Horse
Purification:	Purified by Protein A.

Target Details

Target:	ANO1
---------	------

Target Details

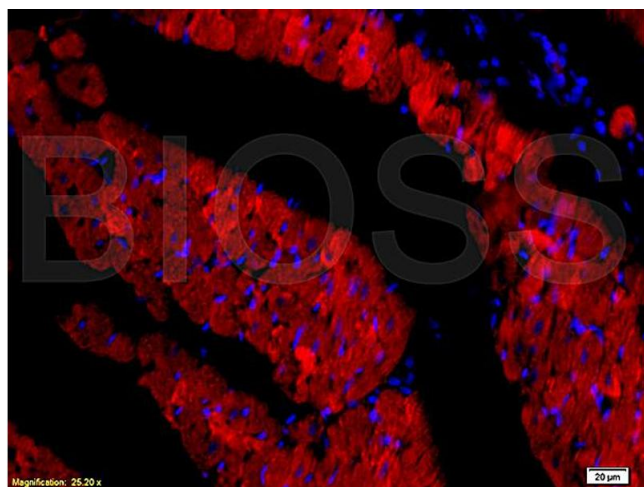
Alternative Name:	TMEM16A (ANO1 Products)
Background:	<p>Synonyms: DOG1, TAOS2, ORAOV2, TMEM16A, Anoctamin-1, Discovered on gastrointestinal stromal tumors protein 1, Oral cancer overexpressed protein 2, Transmembrane protein 16A, Tumor-amplified and overexpressed sequence 2, ANO1</p> <p>Background: Calcium-activated chloride channel (CaCC) which plays a role in transepithelial anion transport and smooth muscle contraction. Required for the normal functioning of the interstitial cells of Cajal (ICCs) which generate electrical pacemaker activity in gastrointestinal smooth muscles. Acts as a major contributor to basal and stimulated chloride conductance in airway epithelial cells and plays an important role in tracheal cartilage development.</p>
Gene ID:	55107
UniProt:	Q5XXA6

Application Details

Application Notes:	WB 1:300-5000 ELISA 1:500-1000 IHC-P 1:200-400 IHC-F 1:100-500 IF(IHC-P) 1:50-200 IF(IHC-F) 1:50-200 IF(ICC) 1:50-200
Restrictions:	For Research Use only

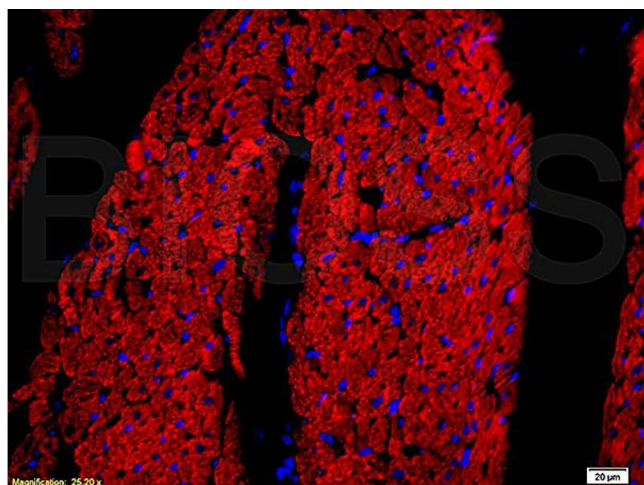
Handling

Format:	Liquid
Concentration:	1 µg/µL
Buffer:	0.01M TBS(pH 7.4) with 1 % BSA, 0.02 % Proclin300 and 50 % Glycerol.
Preservative:	ProClin
Precaution of Use:	This product contains ProClin: a POISONOUS AND HAZARDOUS SUBSTANCE, which should be handled by trained staff only.
Storage:	4 °C,-20 °C
Storage Comment:	Shipped at 4°C. Store at -20°C for one year. Avoid repeated freeze/thaw cycles.



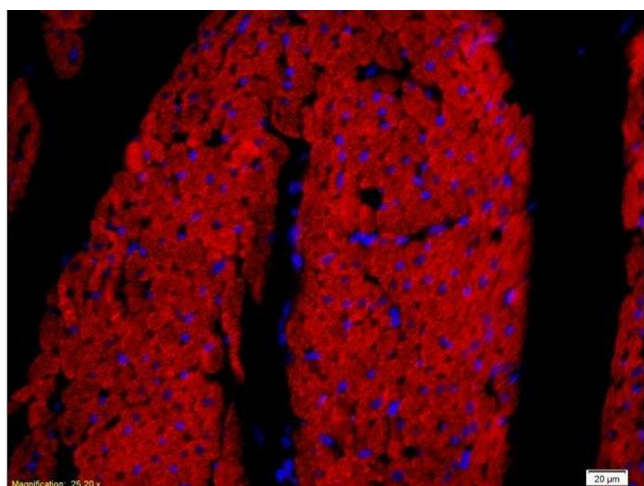
Immunofluorescence

Image 1. Formalin-fixed and paraffin embedded rat heart tissue labeled with Rabbit Anti-DOG-1/TMEM16A Polyclonal Antibody, Unconjugated (ABIN704216) at 1:200 followed by conjugation to the secondary antibody and DAB staining.



Immunofluorescence

Image 2. Formalin-fixed and paraffin embedded rat heart tissue labeled with Rabbit Anti-DOG-1/TMEM16A Polyclonal Antibody, Unconjugated (ABIN704216) at 1:200 followed by conjugation to the secondary antibody and DAB staining.



Immunofluorescence (Paraffin-embedded Sections)

Image 3. Formalin-fixed and paraffin embedded rat heart tissue labeled with Rabbit Anti-DOG-1/TMEM16A Polyclonal Antibody, Unconjugated at 1:200 followed by conjugation to the secondary antibody and DAB staining.