

Datasheet for ABIN7042876
anti-HTR7 antibody (Extracellular, N-Term)



[Go to Product page](#)

5 Images

Overview

Quantity:	0.2 mL
Target:	HTR7
Binding Specificity:	AA 73-84, Extracellular, N-Term
Reactivity:	Human, Mouse, Rat
Host:	Rabbit
Clonality:	Polyclonal
Conjugate:	This HTR7 antibody is un-conjugated
Application:	Western Blotting (WB), Immunohistochemistry (IHC), Immunofluorescence (IF), Flow Cytometry (FACS)

Product Details

Immunogen:	Immunogen: Synthetic peptide Immunogen Sequence: CGEQINYGRVEK, corresponding to amino acid residues 73 - 84 of rat 5-HT7
Isotype:	IgG
Characteristics:	Anti-5HT7 Receptor/HTR7 (extracellular) Antibody (ABIN7042876, ABIN7045292 and ABIN7045293)) is a highly specific antibody directed against an epitope of the rat protein. The antibody can be used in western blot, immunohistochemistry, and live cell flow cytometry applications. It has been designed to recognize 5HT7 from human, rat, and mouse samples.
Purification:	Affinity purified on immobilized antigen.

Target Details

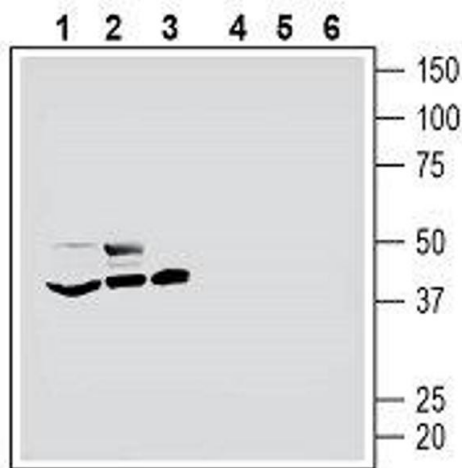
Target:	HTR7
Alternative Name:	5HT7 Receptor/HTR7 (HTR7 Products)
Background:	Alternative names: 5-Hydroxytryptamine Receptor 7, Serotonin Receptor 7, 5-HT7, 5-HT-7
Gene ID:	42648
NCBI Accession:	NM_000872
UniProt:	P34969
Pathways:	JAK-STAT Signaling

Application Details

Application Notes:	Optimal working dilution should be determined by the investigator.
Restrictions:	For Research Use only

Handling

Format:	Lyophilized
Reconstitution:	25 µL, 50 µL or 0.2 mL double distilled water (DDW), depending on the sample size.
Concentration:	0.8 mg/mL
Buffer:	Reconstituted antibody contains phosphate buffered saline (PBS), pH 7.4, 1 % BSA, 0.05 % Sodium azide.
Preservative:	Sodium azide
Precaution of Use:	This product contains Sodium azide: a POISONOUS AND HAZARDOUS SUBSTANCE which should be handled by trained staff only.
Storage:	RT, 4 °C, -20 °C
Storage Comment:	<p>Storage before reconstitution: The antibody ships as a lyophilized powder at room temperature. Upon arrival, it should be stored at -20°C.</p> <p>Storage after reconstitution: The reconstituted solution can be stored at 4°C for up to 1 week. For longer periods, small aliquots should be stored at -20°C. Avoid multiple freezing and thawing. Centrifuge all antibody preparations before use (10000 x g 5 min).</p>

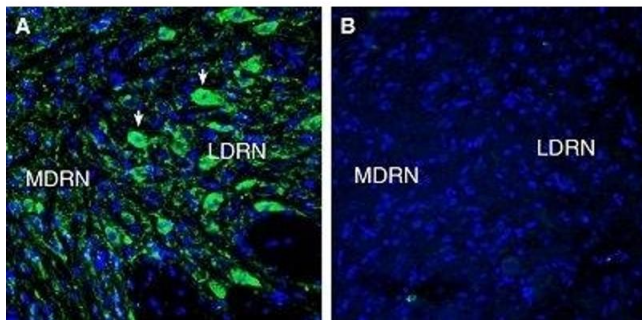


Western Blotting

Image 1. Western blot analysis of mouse BV-2 microglia cell line lysate (lanes 1 and 4), human THP-1 monocytic leukemia cell line lysate (lanes 2 and 5) and human MEG-01 megakaryoblastic leukemia cell line lysate (lanes 3 and 6): - 1-3. Anti-5HT7 Receptor/HTR7 (extracellular) Antibody (ABIN7042876, ABIN7045292 and ABIN7045293), (1:400). 4-6. Anti-5HT7 Receptor/HTR7 (extracellular) Antibody, preincubated with 5HT7 Receptor/HTR7 (extracellular) Blocking Peptide (#BLP-SR037).

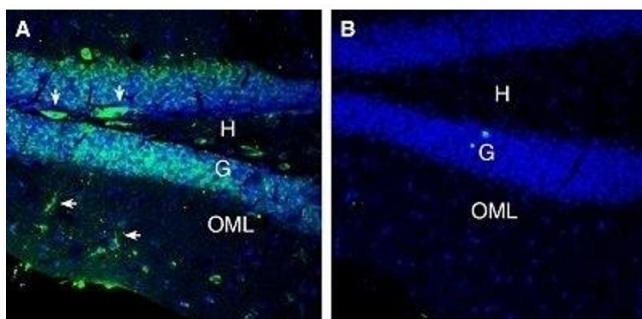
Immunohistochemistry

Image 2. Expression of 5HT7 Receptor in rat dorsal raphe nucleus (DRN) - Immunohistochemical staining of perfusion-fixed frozen rat brain sections with Anti-5HT7 Receptor/HTR7 (extracellular) Antibody (ABIN7042876, ABIN7045292 and ABIN7045293), (1:300), followed by goat anti-rabbit-AlexaFluor-488. A. 5HT7R immunoreactivity (green) appears in neuronal profiles in the lateral DRN (arrows). B. Pre-incubation of the antibody with 5HT7 Receptor/HTR7 (extracellular) Blocking Peptide (#BLP-SR037), suppresses staining. Cell nuclei are stained with DAPI (blue). LDRN = lateral DRN, MDRN = medial DRN.



Immunohistochemistry

Image 3. Expression of 5HT7 Receptor in mouse hippocampus - Immunohistochemical staining of perfusion-fixed frozen mouse brain sections with Anti-5HT7 Receptor/HTR7 (extracellular) Antibody (ABIN7042876, ABIN7045292 and ABIN7045293), (1:300), followed by goat anti-rabbit-AlexaFluor-488. A. Staining in the hippocampal dentate gyrus region, shows 5HT7R immunoreactivity (green) in neuronal profiles in the hilus (vertical arrows) and in glial profiles in the outer molecular layer (OML, horizontal arrows). B. Pre-incubation of the antibody with 5HT7



Receptor/HTR7 (extracellular) Blocking Peptide (#BLP-SR037), suppressed staining. Cell nuclei are stained with DAPI (blue). H = hilus, G = granule layer, OML= outer molecular layer.

Please check the [product details page](#) for more images. Overall 5 images are available for ABIN7042876.