

Datasheet for ABIN7042880
anti-ADAM10 antibody (Extracellular, N-Term)

5 Images

[Go to Product page](#)

Overview

Quantity:	0.2 mL
Target:	ADAM10
Binding Specificity:	AA 400-414, Extracellular, N-Term
Reactivity:	Human, Rat, Mouse
Host:	Rabbit
Clonality:	Polyclonal
Conjugate:	This ADAM10 antibody is un-conjugated
Application:	Western Blotting (WB), Immunohistochemistry (IHC), Flow Cytometry (FACS), Live Cell Imaging (LCI)

Product Details

Immunogen:	Immunogen: Synthetic peptide Immunogen Sequence: CTPGESKNLGQKENG, corresponding to amino acid residues 400 - 414 of mouse ADAM10
Isotype:	IgG
Characteristics:	Anti-ADAM10 (extracellular) Antibody (ABIN7042880, ABIN7044734 and ABIN7044735)) is a highly specific antibody directed against an extracellular epitope of mouse ADAM10. The antibody can be used in western blot, Indirect flow cytometry and immunohistochemistry. It has been designed to recognize ADAM10 from mouse, rat and human samples.
Purification:	Affinity purified on immobilized antigen.

Target Details

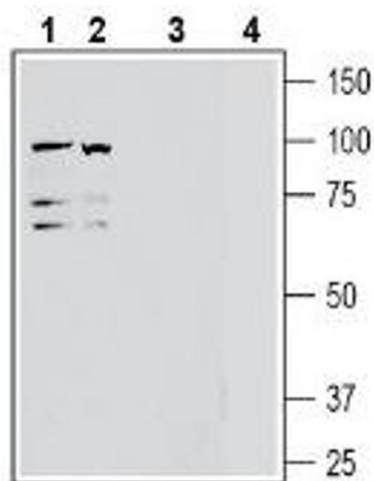
Target:	ADAM10
Alternative Name:	ADAM10 (ADAM10 Products)
Background:	Alternative names: Disintegrin And Metalloproteinase Domain-Containing Protein 10, ADAM Metallopeptidase Domain 10, CD156c
Gene ID:	44133
NCBI Accession:	NM_001110
UniProt:	O14672
Pathways:	Notch Signaling , EGFR Signaling Pathway

Application Details

Application Notes:	Optimal working dilution should be determined by the investigator.
Restrictions:	For Research Use only

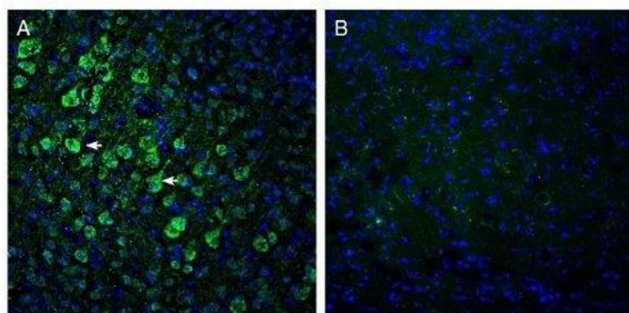
Handling

Format:	Lyophilized
Reconstitution:	25 µL, 50 µL or 0.2 mL double distilled water (DDW), depending on the sample size.
Concentration:	0.8 mg/mL
Buffer:	Reconstituted antibody contains phosphate buffered saline (PBS), pH 7.4, 1 % BSA, 0.05 % Sodium azide.
Preservative:	Sodium azide
Precaution of Use:	This product contains Sodium azide: a POISONOUS AND HAZARDOUS SUBSTANCE which should be handled by trained staff only.
Storage:	RT, 4 °C, -20 °C
Storage Comment:	<p>Storage before reconstitution: The antibody ships as a lyophilized powder at room temperature. Upon arrival, it should be stored at -20°C.</p> <p>Storage after reconstitution: The reconstituted solution can be stored at 4°C for up to 1 week. For longer periods, small aliquots should be stored at -20°C. Avoid multiple freezing and thawing. Centrifuge all antibody preparations before use (10000 x g 5 min).</p>



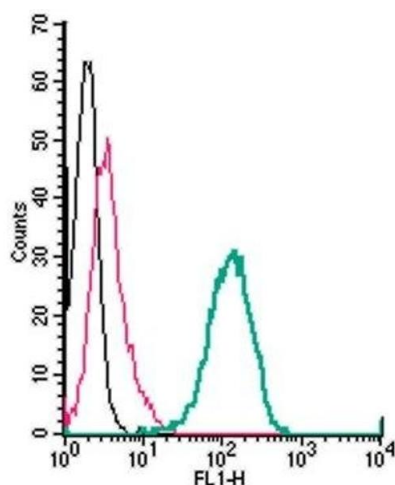
Western Blotting

Image 1. Western blot analysis of human Jurkat T-cell leukemia cell line lysate (lanes 1 and 3) and human K562 erythroleukemia cell line lysate (lanes 2 and 4): - 1-2. Anti-ADAM10 (extracellular) Antibody (ABIN7042880, ABIN7044734 and ABIN7044735), (1:200). 3-4. Anti-ADAM10 (extracellular) Antibody, preincubated with ADAM10 (extracellular) Blocking Peptide (BLP-NR156).



Immunohistochemistry

Image 2. Expression of ADAM10 in mouse parietal cortex. - Immunohistochemical staining of perfusion-fixed frozen mouse brain sections with Anti-ADAM10 (extracellular) Antibody (ABIN7042880, ABIN7044734 and ABIN7044735), (1:300), followed by goat anti-rabbit-AlexaFluor-488. A. ADAM10 immunoreactivity (green) appears in neuronal profiles (horizontal arrows). B. Pre-incubation of the antibody with ADAM10 (extracellular) Blocking Peptide (BLP-NR156), suppressed staining. Cell nuclei are stained with DAPI (blue).



Flow Cytometry

Image 3. Cell surface detection of ADAM10 by indirect flow cytometry in live intact human THP-1 monocytic leukemia cells: (black line) Cells.(red line) Cells + goat-anti-rabbit-FITC.(green line) Cells + Anti-ADAM10 (extracellular) Antibody (ABIN7042880, ABIN7044734 and ABIN7044735), (2.5 µg) + goat-anti-rabbit-FITC.

Please check the [product details page](#) for more images. Overall 5 images are available for ABIN7042880.