

Datasheet for ABIN7042881

anti-ADAM22 antibody (Extracellular, N-Term)[Go to Product page](#)**2** Images

Overview

Quantity:	25 µL
Target:	ADAM22
Binding Specificity:	AA 715-729, Extracellular, N-Term
Reactivity:	Human, Mouse, Rat
Host:	Rabbit
Clonality:	Polyclonal
Conjugate:	This ADAM22 antibody is un-conjugated
Application:	Western Blotting (WB), Immunohistochemistry (IHC), Immunofluorescence (IF)

Product Details

Immunogen:	Immunogen: Synthetic peptide Immunogen Sequence: (C)HNDDAKTGITLSGNG, corresponding to amino acid residues 715-729 of mouse ADAM22
Isotype:	IgG
Characteristics:	Anti-ADAM22 (extracellular) Antibody (ABIN7042881, ABIN7044724 and ABIN7044725)) is a highly specific antibody directed against an epitope of the mouse protein. The antibody can be used in western blot and immunohistochemistry applications. The antibody recognizes an extracellular epitope and can potentially be used for detecting the protein in living cells. It has been designed to recognize ADAM22 from rat, mouse, and human samples.
Purification:	Affinity purified on immobilized antigen.

Target Details

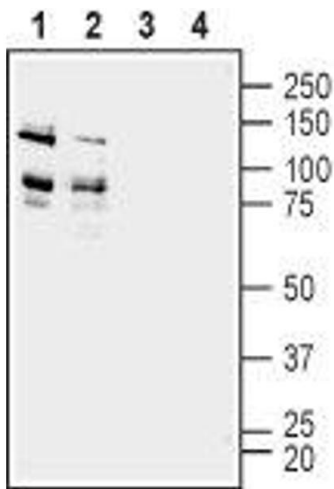
Target:	ADAM22
Alternative Name:	ADAM22 (ADAM22 Products)
Background:	Alternative names: ADAM22, Disintegrin and metalloproteinase domain-containing protein 22, ADAM metalloproteinase domain 22, MDC2
Gene ID:	11496
NCBI Accession:	NM_021723
UniProt:	Q9R1V6

Application Details

Application Notes:	Optimal working dilution should be determined by the investigator.
Restrictions:	For Research Use only

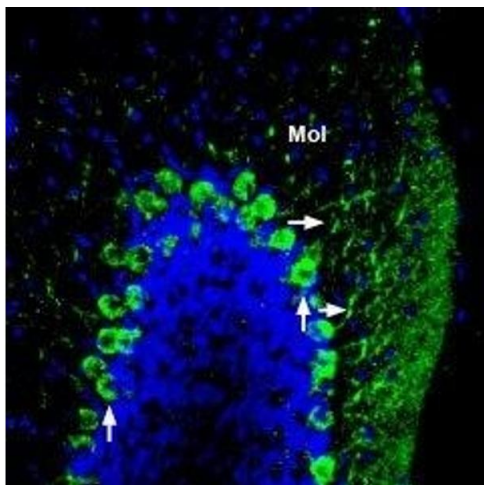
Handling

Format:	Lyophilized
Reconstitution:	25 µL, 50 µL or 0.2 mL double distilled water (DDW), depending on the sample size.
Concentration:	0.8 mg/mL
Buffer:	Reconstituted antibody contains phosphate buffered saline (PBS), pH 7.4, 1 % BSA, 0.05 % Sodium azide.
Preservative:	Sodium azide
Precaution of Use:	This product contains Sodium azide: a POISONOUS AND HAZARDOUS SUBSTANCE which should be handled by trained staff only.
Storage:	RT, 4 °C, -20 °C
Storage Comment:	Storage before reconstitution: The antibody ships as a lyophilized powder at room temperature. Upon arrival, it should be stored at -20°C. Storage after reconstitution: The reconstituted solution can be stored at 4°C for up to 1 week. For longer periods, small aliquots should be stored at -20°C. Avoid multiple freezing and thawing. Centrifuge all antibody preparations before use (10000 x g 5 min).



Western Blotting

Image 1. Western blot analysis of rat (lanes 1 and 3) and mouse (lanes 2 and 4) brain membranes: - 1,2. Anti-ADAM22 (extracellular) Antibody (ABIN7042881, ABIN7044724 and ABIN7044725), (1:200).3,4. Anti-ADAM22 (extracellular) Antibody, preincubated with ADAM22 (extracellular) Blocking Peptide (#BLP-NR120).



Immunohistochemistry

Image 2. Expression of ADAM22 in mouse cerebellum - Immunohistochemical staining of perfusion-fixed frozen mouse brain sections using Anti-ADAM22 (extracellular) Antibody (ABIN7042881, ABIN7044724 and ABIN7044725), (1:200), followed by goat-anti-rabbit-AlexaFluor-488 secondary antibody. ADAM22 staining (green) appears in Purkinje cells (vertical arrows) and in dendrites (horizontal arrows) in the molecular layer (Mol). Cell nuclei are stained with DAPI (blue).