

Datasheet for ABIN7042890
anti-Adenosine A2b Receptor antibody (2nd Extracellular Loop) (FITC)



[Go to Product page](#)

2 Images

Overview

Quantity:	50 µL
Target:	Adenosine A2b Receptor (ADORA2B)
Binding Specificity:	2nd Extracellular Loop, AA 147-166
Reactivity:	Human, Mouse
Host:	Rabbit
Clonality:	Polyclonal
Conjugate:	This Adenosine A2b Receptor antibody is conjugated to FITC
Application:	Flow Cytometry (FACS)

Product Details

Immunogen:	Immunogen: Synthetic peptide Immunogen Sequence: KDSATNN(S)TEPWDGTTNESC, corresponding to amino acid residues 147-166 of human A2BAR
Isotype:	IgG
Characteristics:	Anti-Adenosine A2B Receptor (extracellular) Antibody (ABIN7042889, ABIN7043890 and ABIN7043891)) is a highly specific antibody directed against an extracellular epitope of the human protein. The antibody can be used in western blot, immunohistochemistry, live cell imaging, and indirect flow cytometry applications. It has been designed to recognize A2BAR from human, rat, and mouse samples. \nAnti-Adenosine A2B Receptor (extracellular)-FITC Antibody (ABIN7042889, ABIN7043890 and ABIN7043891)-F) is directly conjugated to fluorescein isothiocyanate (FITC). This labeled antibody can be used in immunofluorescent applications such as direct flow cytometry using live cells.

Product Details

Purification: Affinity purified on immobilized antigen.

Target Details

Target: Adenosine A2b Receptor (ADORA2B)

Alternative Name: Adenosine A2B Receptor ([ADORA2B Products](#))

Background: Alternative names: Adenosine A2B Receptor, ADORA2b, A2BAR, Adenosine A2bR

Gene ID: 136

NCBI Accession: [NM_000676](#)

UniProt: [P29275](#)

Pathways: [cAMP Metabolic Process](#), [Regulation of Leukocyte Mediated Immunity](#), [Positive Regulation of Immune Effector Process](#)

Application Details

Application Notes: Optimal working dilution should be determined by the investigator.

Restrictions: For Research Use only

Handling

Format: Lyophilized

Reconstitution: 50 µL double distilled water (DDW).

Concentration: 1 mg/mL

Buffer: Reconstituted antibody contains phosphate buffered saline (PBS), pH 7.4, 1 % BSA, 0.05 % Sodium azide.

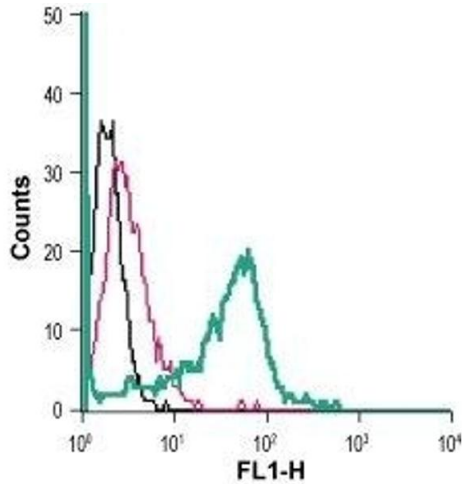
Preservative: Sodium azide

Precaution of Use: This product contains Sodium azide: a POISONOUS AND HAZARDOUS SUBSTANCE which should be handled by trained staff only.

Storage: RT, 4 °C, -20 °C

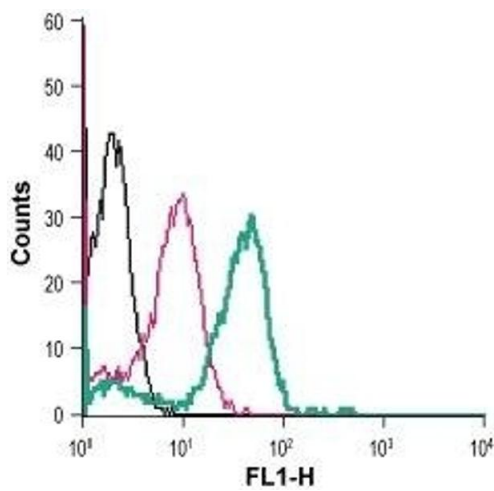
Storage Comment: Storage before reconstitution: The antibody ships as a lyophilized powder at room temperature. Upon arrival, it should be stored at -20°C.
Storage after reconstitution: The reconstituted solution can be stored at 4°C, protected from the light, for up to 1 week. For longer periods, small aliquots should be stored at -20°C. Avoid

multiple freezing and thawing. Centrifuge all antibody preparations before use (10000 x g 5 min).



Flow Cytometry

Image 1. Cell surface detection of ADORA2b in live intact mouse J774 macrophage cells: (black line) Cells.(red line) Cells + Rabbit IgG isotype control-FITC. (green line) Cells + Adenosine A2B Receptor (extracellular)-FITC Antibody (ABIN7042890, ABIN7045452, ABIN7045453 and ABIN7045454), (5 µg).



Flow Cytometry

Image 2. Cell surface detection of ADORA2b in live intact human THP-1 monocytic leukemia cells: (black line) Cells.(red line) Cells + Rabbit IgG isotype control-FITC. (green line) Cells + Adenosine A2B Receptor (extracellular)-FITC Antibody (ABIN7042890, ABIN7045452, ABIN7045453 and ABIN7045454), (5 µg).