

Datasheet for ABIN7042894

**anti-ADCYAP1R1 antibody (C-Term, Intracellular)**[Go to Product page](#)**2** Images

## Overview

Quantity:	25 µL
Target:	ADCYAP1R1
Binding Specificity:	AA 474-487, C-Term, Intracellular
Reactivity:	Mouse, Rat
Host:	Rabbit
Clonality:	Polyclonal
Conjugate:	This ADCYAP1R1 antibody is un-conjugated
Application:	Western Blotting (WB), Immunohistochemistry (IHC), Immunofluorescence (IF)

## Product Details

Immunogen:	Immunogen: Synthetic peptide Immunogen Sequence: (C)KVNRYFTMDFKHRH, corresponding to amino acid residues 474-487 of rat PAC1 receptor
Isotype:	IgG
Characteristics:	Anti-PACAP Receptor 1 (PAC1) Antibody is directed against an epitope of the rat PACAP type I receptor. Anti-PACAP Receptor 1 (PAC1) Antibody (ABIN7042894, ABIN7045333 and ABIN7045334)) can be used in western blot and immunohistochemistry applications. It has been designed to recognize PAC1 receptor from rat, mouse and human samples.
Purification:	Affinity purified on immobilized antigen.

## Target Details

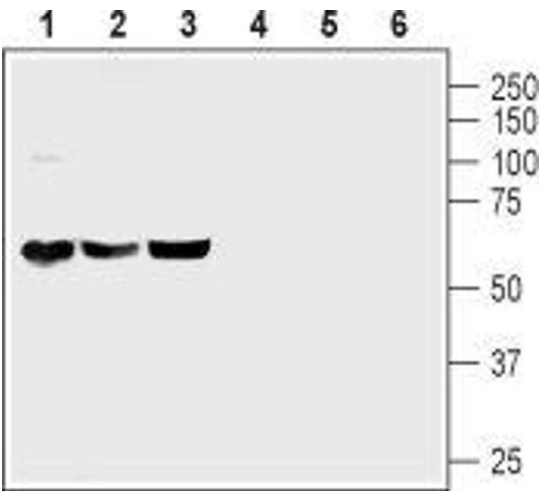
Target:	ADCYAP1R1
Alternative Name:	PACAP Receptor 1 (PAC1) ( <a href="#">ADCYAP1R1 Products</a> )
Background:	Alternative names: PACAP Receptor 1 (PAC1), PACAP type I receptor, Pituitary adenylate cyclase-activating polypeptide type I receptor, PACAP-R1, ADCYAP1R1
Gene ID:	24167
NCBI Accession:	<a href="#">NM_001118</a>
UniProt:	<a href="#">P32215</a>
Pathways:	<a href="#">Neurotrophin Signaling Pathway</a> , <a href="#">cAMP Metabolic Process</a> , <a href="#">Regulation of Carbohydrate Metabolic Process</a>

## Application Details

Application Notes:	Optimal working dilution should be determined by the investigator.
Restrictions:	For Research Use only

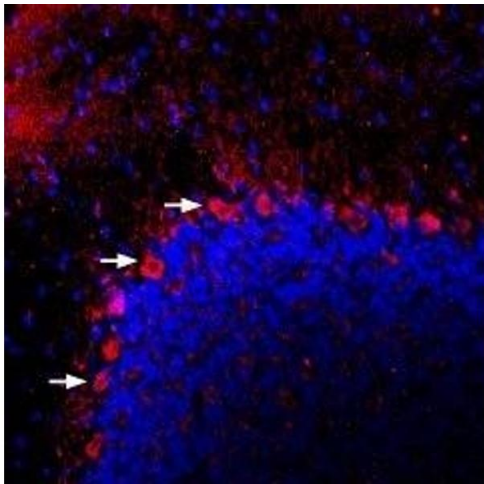
## Handling

Format:	Lyophilized
Reconstitution:	25 µL, 50 µL or 0.2 mL double distilled water (DDW), depending on the sample size.
Concentration:	0.8 mg/mL
Buffer:	Reconstituted antibody contains phosphate buffered saline (PBS), pH 7.4, 1 % BSA, 0.05 % Sodium azide.
Preservative:	Sodium azide
Precaution of Use:	This product contains Sodium azide: a POISONOUS AND HAZARDOUS SUBSTANCE which should be handled by trained staff only.
Storage:	RT, 4 °C, -20 °C
Storage Comment:	<p>Storage before reconstitution: The antibody ships as a lyophilized powder at room temperature. Upon arrival, it should be stored at -20°C.</p> <p>Storage after reconstitution: The reconstituted solution can be stored at 4°C for up to 1 week. For longer periods, small aliquots should be stored at -20°C. Avoid multiple freezing and thawing. Centrifuge all antibody preparations before use (10000 x g 5 min).</p>



### Western Blotting

**Image 1.** Western blot analysis of mouse brain (lanes 1 and 4), rat brain (lanes 2 and 5) and rat cerebellum (lanes 3 and 6) lysates: - 1-3. Anti-PACAP Receptor 1 (PAC1) Antibody (ABIN7042894, ABIN7045333 and ABIN7045334), (1:500). 4-6. Anti-PACAP Receptor 1 (PAC1) Antibody, preincubated with PACAP Receptor 1/PAC1 Blocking Peptide (#BLP-VR003).



### Immunohistochemistry

**Image 2.** Expression of PAC1 receptor in rat cerebellum - Immunohistochemical staining of perfusion-fixed frozen rat brain sections using Anti-PACAP Receptor 1 (PAC1) Antibody (ABIN7042894, ABIN7045333 and ABIN7045334), (1:400), followed by donkey anti-rabbit-Cy3 antibody. PAC1 receptor staining (red) appears in Purkinje cells (arrows). Nuclei are stained with DAPI (blue).