

Datasheet for ABIN7042920  
**anti-MAS1 antibody (AA 212-224)**



[Go to Product page](#)

4 Images

## Overview

Quantity:	50 µL
Target:	MAS1
Binding Specificity:	AA 212-224
Reactivity:	Rat
Host:	Rabbit
Clonality:	Polyclonal
Conjugate:	This MAS1 antibody is un-conjugated
Application:	Western Blotting (WB), Immunohistochemistry (IHC), Immunofluorescence (IF), Immunochromatography (IC)

## Product Details

Purpose:	A Rabbit Polyclonal Antibody to Angiotensin-(1-7) Mas Receptor
Immunogen:	Immunogen: Synthetic peptide Immunogen Sequence: (C)KIRKNTWASHSSK, corresponding to amino acid residues 212-224 of the rat Angiotensin-(1-7) Mas receptor
Isotype:	IgG
Specificity:	3rd intracellular loop
Cross-Reactivity:	Human, Mouse, Rat
Predicted Reactivity:	Mouse,human - identical
Characteristics:	Anti-Angiotensin-(1-7) Mas Receptor Antibody (ABIN7042920, ABIN7043904 and

## Product Details

ABIN7043905)) is a highly specific antibody designed against an epitope of the rat protein. The antibody can be used in western blot, immunocytochemistry, and immunohistochemistry applications. It has been designed to recognize Ang-(1-7) Mas receptor from rat, mouse, and human samples.

Purification: Affinity purified on immobilized antigen.

Grade: KO Validated

## Target Details

Target: MAS1

Alternative Name: MAS1 ([MAS1 Products](#))

Background: Proto-oncogene Mas, MAS1, The Angiotensin-(1-7) Mas receptor is the recently identified receptor of the biologically active heptapeptide Angiotensin-(1-7).<sup>1</sup> Angiotensin (Ang)-(1-7) is a metabolite of the well known peptide hormone Angiotensin (Ang) II, a key component of the renin-angiotensin system (RAS) that has a central role in cardiovascular homeostasis. Considerable interest in Ang-(1-7) and its receptor aroused in the last few years since it became apparent that it can counterbalance most of Ang II effects. Thus Ang-(1-7) has vasodilator and hypotensive effects as well as antiarrhythmic and cardioprotective roles.<sup>2</sup>,<sup>3</sup> The Ang-(1-7) Mas receptor belongs to the 7-transmembrane domain, G protein-coupled receptor (GPCR) superfamily and was originally described as a protooncogene. Signaling via the Ang-(1-7) Mas receptor is still poorly elucidated however, evidence indicates that the receptor is coupled to a Gq/11 protein that activates phospholipase C (PLC).<sup>2,3</sup> The Ang-(1-7) Mas receptor is expressed in several organs including heart, kidney, blood vessels, testis and brain. Studies with Ang-(1-7) Mas receptor knockout mice have demonstrated the key role of this receptor in cardiovascular regulation as well as in the regulation of learning and memory.<sup>2</sup>

Alternative names: Angiotensin-(1-7) Mas Receptor, Proto-oncogene Mas, MAS1

Gene ID: 25153

NCBI Accession: [NM\\_002377](#)

UniProt: [P12526](#)

Pathways: [ACE Inhibitor Pathway](#), [Regulation of Carbohydrate Metabolic Process](#)

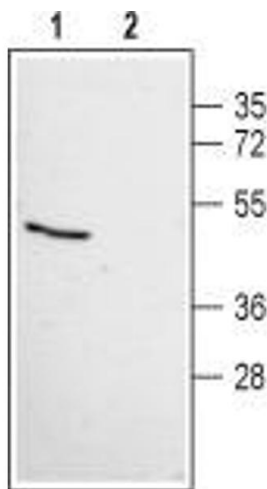
Application Details

Application Notes:	Antigen preadsorption control: 1 µg peptide per 1 µg antibody Application Dilutions Immunohistochemistry paraffin embedded sections ihc: 1:100 Application Dilutions Western blot wb: 1:200
Comment:	Cited Application: IHC ICC IFC Negative Control: BLP-AR013 Blocking Peptide: BLP-AR013
Restrictions:	For Research Use only

Handling

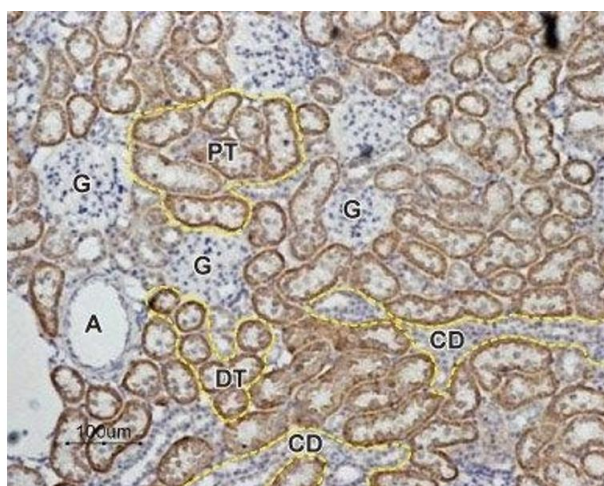
Format:	Lyophilized
Reconstitution:	0.2 mL double distilled water (DDW).
Concentration:	1 mg/mL
Buffer:	PBS pH 7.4
Storage:	4 °C,-20 °C
Storage Comment:	Storage before reconstitution: The antibody ships as a lyophilized powder at room temperature. Upon arrival, it should be stored at -20°C. Storage after reconstitution: The reconstituted solution can be stored at 4°C for up to 1 week. For longer periods, small aliquots should be stored at -20°C. Avoid multiple freezing and thawing. Centrifuge all antibody preparations before use (10000 x g 5 min).

Images



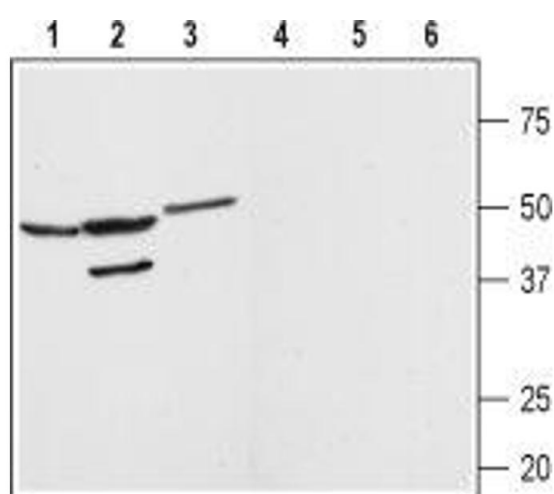
Western Blotting

**Image 1.** Western blot analysis of human HeLa cervix adenocarcinoma cell line lysate: - 1. Anti-Angiotensin-(1-7) Mas Receptor Antibody ((ABIN7042920, ABIN7043904 and ABIN7043905),(1:200).2. Anti-Angiotensin-(1-7) Mas Receptor Antibody, preincubated with Angiotensin-(1-7) Mas Receptor Blocking Peptide (#BLP-AR013).



### Immunohistochemistry

**Image 2.** Expression of Angiotensin-(1-7) Mas Receptor in rat kidney - Immunohistochemical staining of rat kidney paraffin embedded sections using Anti-Angiotensin-(1-7) Mas Receptor Antibody (ABIN7042920, ABIN7043904 and ABIN7043905), (1:100). Angiotensin-(1-7) Mas receptor (brown staining) is detected in proximal tubules (PT) and distal tubules (DT) in the renal cortex. Collecting ducts (CD) are less stained and both glomeruli (G) and blood vessels (A) are negative. Hematoxylin is used as the counterstain.



### Western Blotting

**Image 3.** Western blot analysis of rat brain (lanes 1 and 4) kidney (lanes 2 and 5) and heart (lanes 3 and 6) membranes: - 1-3. Anti-Angiotensin-(1-7) Mas Receptor Antibody ((ABIN7042920, ABIN7043904 and ABIN7043905), (1:200). 4-6. Anti-Angiotensin-(1-7) Mas Receptor Antibody, preincubated with Angiotensin-(1-7) Mas Receptor Blocking Peptide (#BLP-AR013).

Please check the [product details page](#) for more images. Overall 4 images are available for ABIN7042920.