



Datasheet for ABIN7042928

## anti-Anoctamin 2 antibody (3rd Extracellular Loop)



[Go to Product page](#)

### 2 Images

#### Overview

Quantity:	50 µL
Target:	Anoctamin 2 (ANO2)
Binding Specificity:	3rd Extracellular Loop, AA 632-646
Reactivity:	Mouse, Rat
Host:	Rabbit
Clonality:	Polyclonal
Conjugate:	This Anoctamin 2 antibody is un-conjugated
Application:	Western Blotting (WB), Immunohistochemistry (IHC), Immunofluorescence (IF), Immunocytochemistry (ICC)

#### Product Details

Immunogen:	Immunogen: Synthetic peptide Immunogen Sequence: (C)HSKRPEQWDLDSLE, corresponding to amino acid residues 632-646 of mouse Anoctamin-2
Isotype:	IgG
Characteristics:	Anti-TMEM16B (ANO2) (extracellular) Antibody (ABIN7042928, ABIN7044133 and ABIN7044134)) is a highly specific antibody directed against an epitope of mouse Anoctamin-2. The antibody can be used in western blot, immunocytochemistry, and immunohistochemistry applications. It has been designed to recognize Anoctamin-2 from mouse, rat, and human samples.
Purification:	Affinity purified on immobilized antigen.

## Target Details

---

Target:	Anoctamin 2 (ANO2)
Alternative Name:	TMEM16B (ANO2) ( <a href="#">ANO2 Products</a> )
Background:	Alternative names: TMEM16B (ANO2), Anoctamin-2, Transmembrane protein 16B, C12orf3
Gene ID:	243634
NCBI Accession:	<a href="#">NM_020373</a>
UniProt:	<a href="#">Q8CFW1</a>

## Application Details

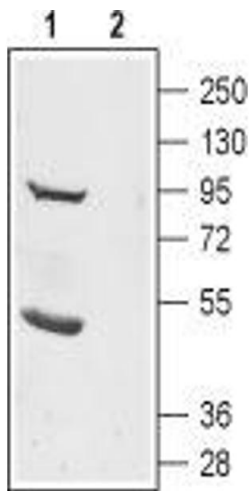
---

Application Notes:	Optimal working dilution should be determined by the investigator.
Restrictions:	For Research Use only

## Handling

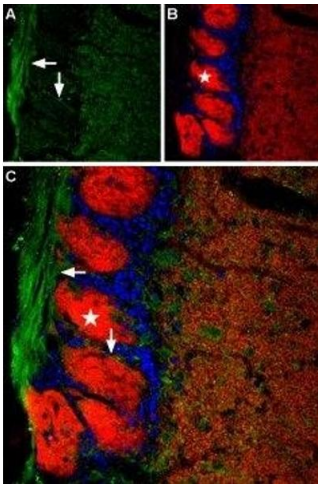
---

Format:	Lyophilized
Reconstitution:	25 µL, 50 µL or 0.2 mL double distilled water (DDW), depending on the sample size.
Concentration:	0.8 mg/mL
Buffer:	Reconstituted antibody contains phosphate buffered saline (PBS), pH 7.4, 1 % BSA, 0.05 % Sodium azide.
Preservative:	Sodium azide
Precaution of Use:	This product contains Sodium azide: a POISONOUS AND HAZARDOUS SUBSTANCE which should be handled by trained staff only.
Storage:	RT, 4 °C, -20 °C
Storage Comment:	Storage before reconstitution: The antibody ships as a lyophilized powder at room temperature. Upon arrival, it should be stored at -20°C. Storage after reconstitution: The reconstituted solution can be stored at 4°C for up to 1 week. For longer periods, small aliquots should be stored at -20°C. Avoid multiple freezing and thawing. Centrifuge all antibody preparations before use (10000 x g 5 min).



### Western Blotting

**Image 1.** Western blot analysis of rat brain lysate: - 1. Anti-TMEM16B (ANO2) (extracellular) Antibody (ABIN7042928, ABIN7044133 and ABIN7044134), (1:200). 2. Anti-TMEM16B (ANO2) (extracellular) Antibody, preincubated with TMEM16B/ANO2 (extracellular) Blocking Peptide (#BLP-CL012).



### Immunohistochemistry

**Image 2.** Expression of Anoctamin-2 in mouse olfactory bulb - Immunohistochemical staining of mouse olfactory bulb using Anti-TMEM16B (ANO2) (extracellular) Antibody (ABIN7042928, ABIN7044133 and ABIN7044134), (1:200). A. Anoctamin-2 is detected in anoctamin-positive axons (arrows). B. Staining with mouse anti-synaptophysin (red) and DAPI (blue) reveals the glomeruli of the olfactory bulb (asterisk). C. Merge of the above images reveals the spatial relationship of the anoctamin-2 positive axons to the olfactory bulb organization.