

Datasheet for ABIN7042930

anti-Anoctamin 6 antibody (2nd Extracellular Loop)

3 Images

[Go to Product page](#)

Overview

Quantity:	50 µL
Target:	Anoctamin 6 (ANO6)
Binding Specificity:	2nd Extracellular Loop, AA 487-500
Reactivity:	Human, Mouse, Rat
Host:	Rabbit
Clonality:	Polyclonal
Application:	Western Blotting (WB), Flow Cytometry (FACS)

Product Details

Immunogen:	Immunogen: Synthetic peptide Immunogen Sequence: (C)KLPKNINGTDPIQK, corresponding to amino acid residues 487-500 of human ANO6
Isotype:	IgG
Characteristics:	Anti-Anoctamin-6 (extracellular) Antibody (ABIN7042930, ABIN7044137 and ABIN7044138)) is a highly specific antibody directed against an epitope of the human protein. The antibody can be used in western blot, and live cell flow cytometry applications. It has been designed to recognize ANO6 from human, rat, and mouse samples.
Purification:	Affinity purified on immobilized antigen.

Target Details

Target:	Anoctamin 6 (ANO6)
---------	--------------------

Target Details

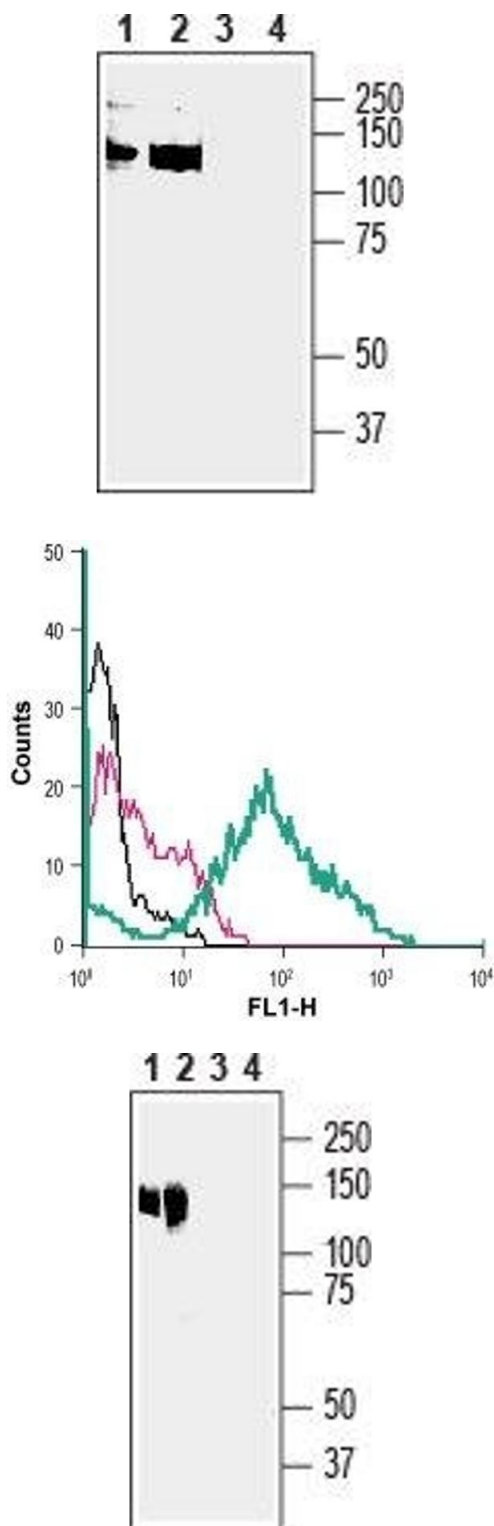
Alternative Name:	Anoctamin-6 (ANO6 Products)
Background:	Alternative names: Anoctamin-6, ANO6, Transmembrane protein 16F, TMEM16F, Small-conductance calcium-activated nonselective cation channel, SCAN channel
Gene ID:	196527
NCBI Accession:	NM_001025356
UniProt:	Q4KMQ2
Pathways:	SARS-CoV-2 Protein Interactome

Application Details

Application Notes:	Optimal working dilution should be determined by the investigator.
Restrictions:	For Research Use only

Handling

Format:	Lyophilized
Reconstitution:	25 µL, 50 µL or 0.2 mL double distilled water (DDW), depending on the sample size.
Concentration:	0.8 mg/mL
Buffer:	Reconstituted antibody contains phosphate buffered saline (PBS), pH 7.4, 1 % BSA, 0.05 % Sodium azide.
Preservative:	Sodium azide
Precaution of Use:	This product contains Sodium azide: a POISONOUS AND HAZARDOUS SUBSTANCE which should be handled by trained staff only.
Storage:	RT, 4 °C, -20 °C
Storage Comment:	<p>Storage before reconstitution: The antibody ships as a lyophilized powder at room temperature. Upon arrival, it should be stored at -20°C.</p> <p>Storage after reconstitution: The reconstituted solution can be stored at 4°C for up to 1 week. For longer periods, small aliquots should be stored at -20°C. Avoid multiple freezing and thawing. Centrifuge all antibody preparations before use (10000 x g 5 min).</p>



Western Blotting

Image 1. Western blot analysis of human THP-1 monocytic leukemia cell line lysate (lanes 1 and 3) and human MEG-01 megakaryoblastic leukemia cell line lysate (lanes 2 and 4): - 1,2. Anti-Anoctamin-6 (extracellular) Antibody (ABIN7042930, ABIN7044137 and ABIN7044138), (1:200).3,4. Anti-Anoctamin-6 (extracellular) Antibody, preincubated with Anoctamin-6 (extracellular) Blocking Peptide (#BLP-CL016).

Flow Cytometry

Image 2. Cell surface detection of ANO6 in live human MEG-01 megakaryoblastic leukemia cell line: (black line) Cells.(red line) Cells + goat-anti-rabbit-FITC.(green line) Cells + Anti-Anoctamin-6 (extracellular) Antibody (ABIN7042930, ABIN7044137 and ABIN7044138), 5 µg + goat-anti-rabbit-FITC.

Western Blotting

Image 3. Western blot analysis of mouse liver lysate (lanes 1 and 3) and rat liver membranes (lanes 2 and 4): - 1,2. Anti-Anoctamin-6 (extracellular) Antibody (ABIN7042930, ABIN7044137 and ABIN7044138), (1:200).3,4. Anti-Anoctamin-6 (extracellular) Antibody, preincubated with Anoctamin-6 (extracellular) Blocking Peptide (#BLP-CL016).