

Datasheet for ABIN7042931

anti-Anoctamin 6 antibody (2nd Extracellular Loop) (FITC)[Go to Product page](#)**2** Images

Overview

Quantity:	50 µL
Target:	Anoctamin 6 (ANO6)
Binding Specificity:	2nd Extracellular Loop, AA 487-500
Reactivity:	Human, Mouse, Rat
Host:	Rabbit
Clonality:	Polyclonal
Conjugate:	This Anoctamin 6 antibody is conjugated to FITC
Application:	Flow Cytometry (FACS)

Product Details

Immunogen:	Immunogen: Synthetic peptide Immunogen Sequence: (C)KLPKNINGTDPIQK, corresponding to amino acid residues 487-500 of human ANO6
Isotype:	IgG
Characteristics:	Anti-Anoctamin-6 (extracellular) Antibody (ABIN7042930, ABIN7044137 and ABIN7044138)) is a highly specific antibody directed against an epitope of the human protein. The antibody can be used in western blot, and live cell flow cytometry applications. It has been designed to recognize ANO6 from human, rat, and mouse samples. \nAnti-Anoctamin-6 (extracellular)-FITC Antibody (ABIN7042930, ABIN7044137 and ABIN7044138)-F) is directly conjugated to fluorescein isothiocyanate (FITC). The antibody can be used in immunofluorescent applications such as direct live cell flow cytometry.

Product Details

Purification: Affinity purified on immobilized antigen.

Target Details

Target: Anoctamin 6 (ANO6)

Alternative Name: Anoctamin-6 ([ANO6 Products](#))

Background: Alternative names: Anoctamin-6, ANO6, Transmembrane protein 16F, TMEM16F, Small-conductance calcium-activated nonselective cation channel, SCAN channel

Gene ID: 196527

NCBI Accession: [NM_001025356](#)

UniProt: [Q4KMQ2](#)

Pathways: [SARS-CoV-2 Protein Interactome](#)

Application Details

Application Notes: Optimal working dilution should be determined by the investigator.

Restrictions: For Research Use only

Handling

Format: Lyophilized

Reconstitution: 50 µL double distilled water (DDW).

Concentration: 1 mg/mL

Buffer: Reconstituted antibody contains phosphate buffered saline (PBS), pH 7.4, 1 % BSA, 0.05 % Sodium azide.

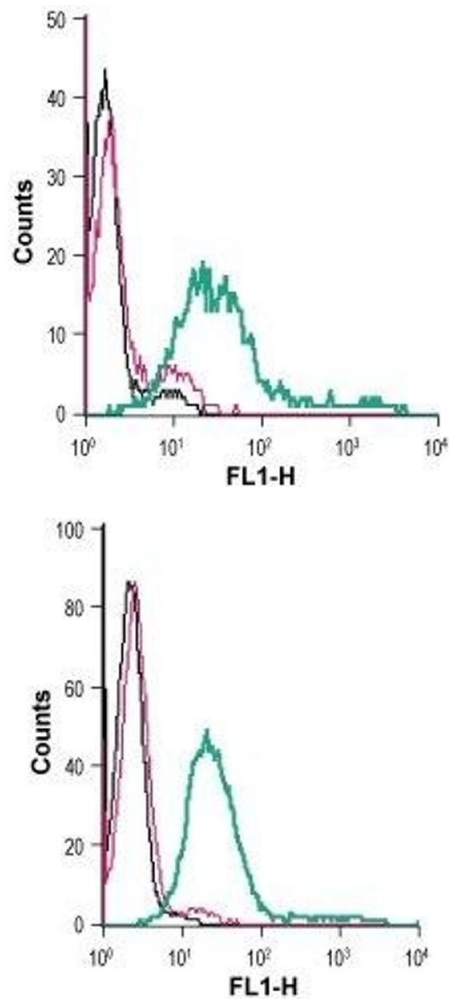
Preservative: Sodium azide

Precaution of Use: This product contains Sodium azide: a POISONOUS AND HAZARDOUS SUBSTANCE which should be handled by trained staff only.

Storage: RT, 4 °C, -20 °C

Storage Comment: Storage before reconstitution: The antibody ships as a lyophilized powder at room temperature. Upon arrival, it should be stored at -20°C.
Storage after reconstitution: The reconstituted solution can be stored at 4°C, protected from the light, for up to 1 week. For longer periods, small aliquots should be stored at -20°C. Avoid

multiple freezing and thawing. Centrifuge all antibody preparations before use (10000 x g 5 min).



Flow Cytometry

Image 1. Cell surface detection of ANO6 in live intact human MEG-01 megakaryoblastic leukemia cells: (black line) Cells.(red line) Cells + Rabbit IgG isotype control-FITC.(green line) Cells + Anti-Anoctamin-6 (extracellular)-FITC Antibody (ABIN7042931, ABIN7045493, ABIN7045494 and ABIN7045495), (5 µg).

Flow Cytometry

Image 2. Cell surface detection of ANO6 in live intact mouse P815 mastocytoma cells: (black line) Cells.(red line) Cells + Rabbit IgG isotype control-FITC.(green line) Cells + Anti-Anoctamin-6 (extracellular)-FITC Antibody (ABIN7042931, ABIN7045493, ABIN7045494 and ABIN7045495), (2.5 µg).