

Datasheet for ABIN7042942

anti-AQP6 antibody (C-Term, Intracellular)**1** Image[Go to Product page](#)

Overview

Quantity:	50 µL
Target:	AQP6
Binding Specificity:	AA 259-276, C-Term, Intracellular
Reactivity:	Rat, Mouse
Host:	Rabbit
Clonality:	Polyclonal
Conjugate:	This AQP6 antibody is un-conjugated
Application:	Western Blotting (WB), Immunohistochemistry (IHC)

Product Details

Immunogen:	Immunogen: Synthetic peptide Immunogen Sequence: (C)EPQKKESQTNSEDETVSV corresponding to amino acid residues 259-276 of rat AQP6
Isotype:	IgG
Characteristics:	Anti-Aquaporin 6 Antibody is directed against an epitope of rat AQP6. Anti-Aquaporin 6 Antibody (ABIN7042942 and ABIN7045202)) can be used in western blot and immunohistochemistry applications. It has been designed to recognize AQP6 from mouse and rat samples.
Purification:	Affinity purified on immobilized antigen.

Target Details

Target:	AQP6
---------	------

Target Details

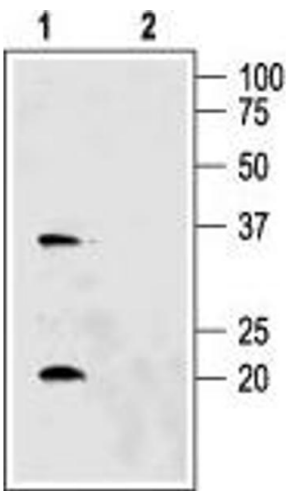
Alternative Name:	Aquaporin 6 (AQP6 Products)
Background:	Alternative names: Aquaporin 6, AQP6, AQP2L, Kidney-specific aquaporin
Gene ID:	29170
UniProt:	Q9WTY0

Application Details

Application Notes:	Optimal working dilution should be determined by the investigator.
Restrictions:	For Research Use only

Handling

Format:	Lyophilized
Reconstitution:	50 µL or 0.2 mL double distilled water (DDW), depending on the sample size.
Concentration:	0.8 mg/mL
Buffer:	Reconstituted antibody contains phosphate buffered saline (PBS), pH 7.4, 1 % BSA, 0.05 % Sodium azide.
Preservative:	Sodium azide
Precaution of Use:	This product contains Sodium azide: a POISONOUS AND HAZARDOUS SUBSTANCE which should be handled by trained staff only.
Storage:	RT, 4 °C, -20 °C
Storage Comment:	<p>Storage before reconstitution: The antibody ships as a lyophilized powder at room temperature. Upon arrival, it should be stored at -20°C.</p> <p>Storage after reconstitution: The reconstituted solution can be stored at 4°C for up to 1 week. For longer periods, small aliquots should be stored at -20°C. Avoid multiple freezing and thawing. Centrifuge all antibody preparations before use (10000 x g 5 min).</p>



Western Blotting

Image 1. Western blot analysis of rat kidney membranes: -
1. Anti-Aquaporin 6 Antibody (ABIN7042942 and ABIN7045202), (1:200). 2. Anti-Aquaporin 6 Antibody, preincubated with Aquaporin 6 Blocking Peptide (#BLP-QP006).