



[Go to Product page](#)

Datasheet for ABIN7042953

## anti-ATP2A1/SERCA1 antibody (Cytosolic, N-Term)

### 3 Images

#### Overview

Quantity:	50 µL
Target:	ATP2A1/SERCA1 (ATP2A1)
Binding Specificity:	AA 25-37, Cytosolic, N-Term
Reactivity:	Rat, Mouse
Host:	Rabbit
Clonality:	Polyclonal
Application:	Western Blotting (WB), Immunohistochemistry (IHC), Immunofluorescence (IF), Immunocytochemistry (ICC)

#### Product Details

Immunogen:	Immunogen: Synthetic peptide Immunogen Sequence: (C)TPDQVKRHLEKYG, corresponding to amino acid residues 25-37 of rat SERCA1
Isotype:	IgG
Characteristics:	Anti-SERCA1 Antibody (ABIN7042953 and ABIN7044150)) is a highly specific antibody directed against an epitope of the rat protein. The antibody can be used in western blot, immunohistochemistry, and immunocytochemistry applications. It has been designed to recognize SERCA1 from rat, mouse, and human samples.
Purification:	Affinity purified on immobilized antigen.

## Target Details

---

Target:	ATP2A1/SERCA1 (ATP2A1)
Alternative Name:	SERCA1 ( <a href="#">ATP2A1 Products</a> )
Background:	Alternative names: SERCA1, Sarcoplasmic/endoplasmic reticulum calcium ATPase 1, Calcium pump 1, ATP2A1
Gene ID:	116601
NCBI Accession:	<a href="#">NM_004320</a>
UniProt:	<a href="#">Q64578</a>
Pathways:	<a href="#">Ribonucleoside Biosynthetic Process</a>

## Application Details

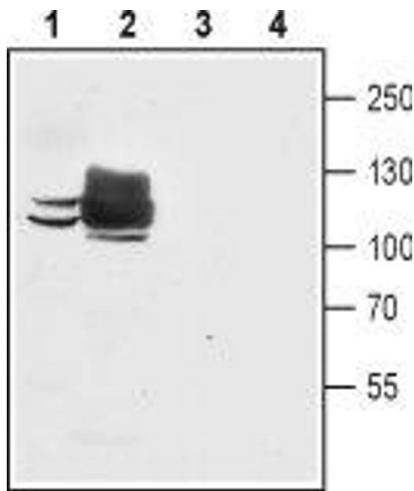
---

Application Notes:	Optimal working dilution should be determined by the investigator.
Restrictions:	For Research Use only

## Handling

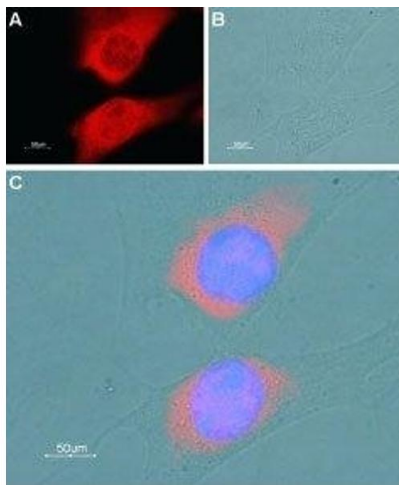
---

Format:	Lyophilized
Reconstitution:	50 µL or 0.2 mL double distilled water (DDW), depending on the sample size.
Concentration:	0.8 mg/mL
Buffer:	Reconstituted antibody contains phosphate buffered saline (PBS), pH 7.4, 1 % BSA, 0.05 % Sodium azide.
Preservative:	Sodium azide
Precaution of Use:	This product contains Sodium azide: a POISONOUS AND HAZARDOUS SUBSTANCE which should be handled by trained staff only.
Storage:	RT, 4 °C, -20 °C
Storage Comment:	Storage before reconstitution: The antibody ships as a lyophilized powder at room temperature. Upon arrival, it should be stored at -20°C. Storage after reconstitution: The reconstituted solution can be stored at 4°C for up to 1 week. For longer periods, small aliquots should be stored at -20°C. Avoid multiple freezing and thawing. Centrifuge all antibody preparations before use (10000 x g 5 min).



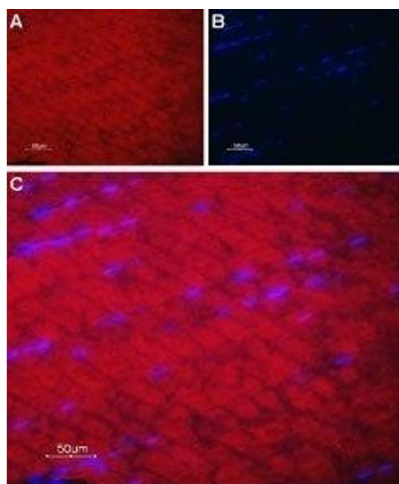
### Western Blotting

**Image 1.** Western blot analysis of mouse C2C12 myoblast cell line lysate (lanes 1 and 3) and rat skeletal muscle membranes (lanes 2 and 4): - 1,2. Anti-SERCA1 Antibody (ABIN7042953 and ABIN7044150), (1:200).3,4. Anti-SERCA1 Antibody, preincubated with SERCA1 Blocking Peptide (#BLP-CP011).



### Immunocytochemistry

**Image 2.** Expression of SERCA1 in mouse C2C12 myoblast cell line - Immunocytochemical staining of fixed and permeabilized C2C12 cells. A. Cells were stained with Anti-SERCA1 Antibody (ABIN7042953 and ABIN7044150), (1:400), followed by goat anti-rabbit-AlexaFluor-594 secondary antibody (red). B. Live image of the cells stained in A. C. Merge image of A and B and visualization of cell nuclei using Hoechst 33342 (blue).



### Immunohistochemistry

**Image 3.** Expression of SERCA1 in rat skeletal muscle - Immunohistochemical staining of rat skeletal muscle paraffin-embedded sections using Anti-SERCA1 Antibody (ABIN7042953 and ABIN7044150), followed by goat anti-rabbit-AlexaFluor-594 secondary antibody. A. SERCA1 labeling appears in the muscle fibers, in a pattern that could indicate the location of the sarcoplasmic reticulum. The endomysium, surrounding muscle fibers, is not stained. B. Nuclear staining using DAPI as the counterstain. C. Merged image of A and B.