

Datasheet for ABIN7042960

anti-ATP6AP2 antibody (Extracellular, N-Term)

4 Images

[Go to Product page](#)

Overview

Quantity:	0.2 mL
Target:	ATP6AP2
Binding Specificity:	AA 200-214, Extracellular, N-Term
Reactivity:	Human, Mouse, Rat
Host:	Rabbit
Clonality:	Polyclonal
Application:	Western Blotting (WB), Immunohistochemistry (IHC), Flow Cytometry (FACS)

Product Details

Immunogen:	Immunogen: Synthetic peptide Immunogen Sequence: (C)RHKHLAKDHSPDLYS, corresponding to amino acid residues 200 - 214 of mouse Renin Receptor
Isotype:	IgG
Cross-Reactivity (Details):	This antibody will recognize both the membrane form of the Renin Receptor and the soluble cleaved form (sPRR).
Characteristics:	A Rabbit Polyclonal Antibody to Renin Receptor

Target Details

Target:	ATP6AP2
Alternative Name:	Renin Receptor/ATP6AP2 (ATP6AP2 Products)
Background:	Alternative names: Prorenin Receptor, Renin/prorenin receptor, PRR, (pro)renin receptor,

Target Details

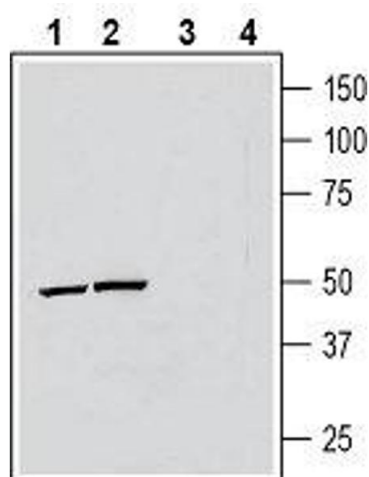
	ATPase H+ Transporting Accessory Protein 2, ATP6IP2
Gene ID:	10159
NCBI Accession:	NM_005765
UniProt:	Q9CYN9
Pathways:	ACE Inhibitor Pathway , Peptide Hormone Metabolism , Regulation of Systemic Arterial Blood Pressure by Hormones

Application Details

Application Notes:	Optimal working dilution should be determined by the investigator.
Restrictions:	For Research Use only

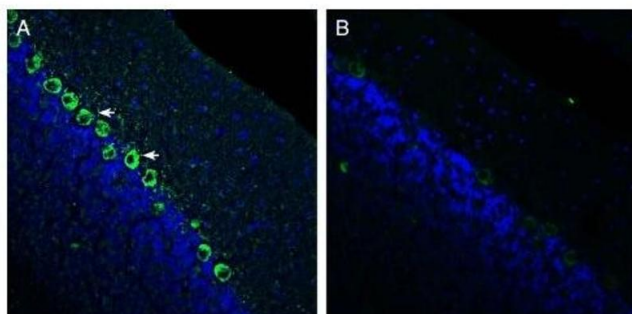
Handling

Format:	Lyophilized
Reconstitution:	25 µL, 50 µL or 0.2 mL double distilled water (DDW), depending on the sample size.
Concentration:	0.8 mg/mL
Buffer:	Reconstituted antibody contains phosphate buffered saline (PBS), pH 7.4, 1 % BSA, 0.05 % Sodium azide.
Preservative:	Sodium azide
Precaution of Use:	This product contains Sodium azide: a POISONOUS AND HAZARDOUS SUBSTANCE which should be handled by trained staff only.
Storage:	RT, 4 °C, -20 °C
Storage Comment:	<p>Storage before reconstitution: The antibody ships as a lyophilized powder at room temperature. Upon arrival, it should be stored at -20°C.</p> <p>Storage after reconstitution: The reconstituted solution can be stored at 4°C for up to 1 week. For longer periods, small aliquots should be stored at -20°C. Avoid multiple freezing and thawing. Centrifuge all antibody preparations before use (10000 x g 5 min).</p>



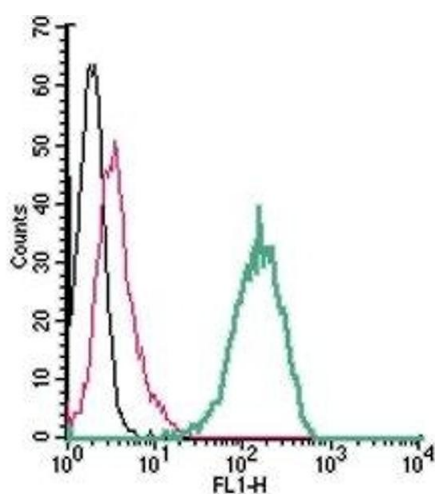
Western Blotting

Image 1. Western blot analysis of human THP-1 monocytic leukemia cell line lysate (lanes 1 and 3) and mouse BV-2 microglia cell line lysate (lanes 2 and 4): - 1, 2. Anti-Renin Receptor/ATP6AP2 (extracellular) Antibody (ABIN7042960, ABIN7043906 and ABIN7043907), (1:200). 3, 4. Anti-Renin Receptor/ATP6AP2 (extracellular) Antibody, preincubated with Renin Receptor/ATP6AP2 (extracellular) Blocking Peptide (#BLP-AR014).



Immunohistochemistry

Image 2. Expression of Renin Receptor in rat cerebellum. - Immunohistochemical staining of perfusion-fixed frozen rat brain sections with Anti-Renin Receptor/ATP6AP2 (extracellular) Antibody (ABIN7042960, ABIN7043906 and ABIN7043907), (1:300), followed by goat anti-rabbit-AlexaFluor-488. A. Renin Receptor immunoreactivity (green) appears in neuronal profiles in the Purkinje cell layer (arrows). B. Pre-incubation of the antibody with Renin Receptor/ATP6AP2 (extracellular) Blocking Peptide (BLP-AR014), suppressed staining. Cell nuclei are stained with DAPI (blue).



Flow Cytometry

Image 3. Cell surface detection of Renin Receptor in live intact human THP-1 monocytic leukemia cells: (black line) Cells. (red line) Cells + goat-anti-rabbit-FITC. (green line) Cells + Anti-Renin Receptor/ATP6AP2 (extracellular) Antibody (ABIN7042960, ABIN7043906 and ABIN7043907), (2.5 µg) + goat-anti-rabbit-FITC.

Please check the [product details page](#) for more images. Overall 4 images are available for ABIN7042960.