

Datasheet for ABIN7042961

anti-ATP1A2 antibody (Intracellular, N-Term)

3 Images

[Go to Product page](#)

Overview

Quantity:	25 µL
Target:	ATP1A2
Binding Specificity:	AA 7-19, Intracellular, N-Term
Reactivity:	Human, Mouse, Rat
Host:	Rabbit
Clonality:	Polyclonal
Application:	Western Blotting (WB), Immunohistochemistry (IHC), Immunofluorescence (IF)

Product Details

Immunogen:	Immunogen: Synthetic peptide Immunogen Sequence: (C)REYSPAATTAENG, corresponding to amino acid residues 7-19 of rat ATP1A2
Isotype:	IgG
Characteristics:	Anti-Alpha 2 Na ⁺ /K ⁺ ATPase Antibody (ABIN7042961, ABIN7044639 and ABIN7044640)) is a highly specific antibody directed against an epitope of the rat ATP1A2. The antibody can be used in western blot and immunohistochemistry applications. It has been designed to recognize ATP1A2 from human, rat, and mouse samples.
Purification:	Affinity purified on immobilized antigen.

Target Details

Target:	ATP1A2
---------	--------

Target Details

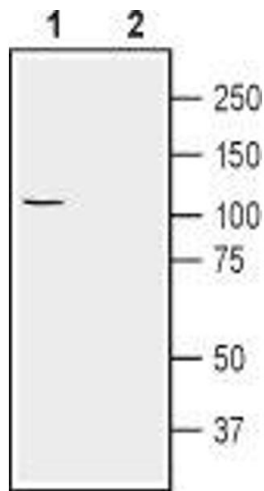
Alternative Name:	Alpha 2 Na ⁺ /K ⁺ ATPase (ATP1A2 Products)
Background:	Alternative names: Alpha 2 Na ⁺ /K ⁺ ATPase, ATP1A2, Sodium/potassium ATPase catalytic subunit alpha-2, Sodium pump subunit alpha-2
Gene ID:	24212
NCBI Accession:	NM_000702
UniProt:	P06686
Pathways:	Thyroid Hormone Synthesis , Proton Transport , Ribonucleoside Biosynthetic Process

Application Details

Application Notes:	Optimal working dilution should be determined by the investigator.
Restrictions:	For Research Use only

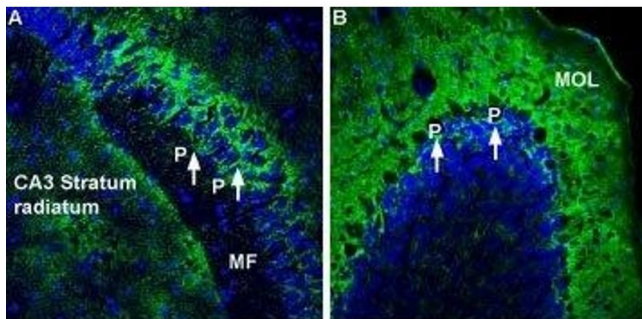
Handling

Format:	Lyophilized
Reconstitution:	25 µL, 50 µL or 0.2 mL double distilled water (DDW), depending on the sample size.
Concentration:	0.8 mg/mL
Buffer:	Reconstituted antibody contains phosphate buffered saline (PBS), pH 7.4, 1 % BSA, 0.05 % Sodium azide.
Preservative:	Sodium azide
Precaution of Use:	This product contains Sodium azide: a POISONOUS AND HAZARDOUS SUBSTANCE which should be handled by trained staff only.
Storage:	RT, 4 °C, -20 °C
Storage Comment:	Storage before reconstitution: The antibody ships as a lyophilized powder at room temperature. Upon arrival, it should be stored at -20°C. Storage after reconstitution: The reconstituted solution can be stored at 4°C for up to 1 week. For longer periods, small aliquots should be stored at -20°C. Avoid multiple freezing and thawing. Centrifuge all antibody preparations before use (10000 x g 5 min).



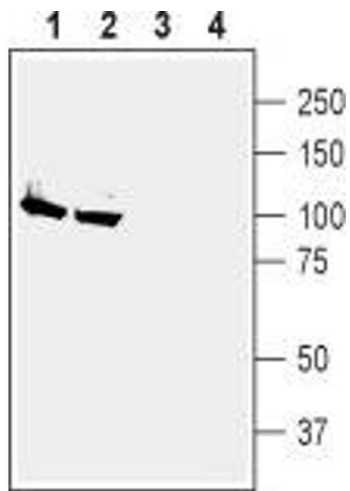
Western Blotting

Image 1. Western blot analysis of human U-87 MG glioblastoma cell lysate: - 1. Anti-Alpha 2 Na⁺/K⁺ ATPase Antibody (ABIN7042961, ABIN7044639 and ABIN7044640), (1:200). 2. Anti- Alpha 2 Na⁺/K⁺ ATPase Antibody, preincubated with Alpha 2 Na⁺/K⁺ ATPase Blocking Peptide (#BLP-NP002).



Immunohistochemistry

Image 2. Expression of Na⁺/K⁺ ATPase α 2 (ATP1A2) in mouse hippocampus and cerebellum - Immunohistochemical staining of perfusion-fixed frozen rat brain sections using Anti-Alpha 2 Na⁺/K⁺ ATPase Antibody (ABIN7042961, ABIN7044639 and ABIN7044640), (1:300), followed by goat-anti-rabbit-AlexaFluor-488 secondary antibody. A. ATP1A2 staining (green) in mouse hippocampal CA3 region is labeled in astrocytic processes (arrows surrounding pyramidal cells, P) and diffused staining is observed in the CA3 stratum radiatum. Note absence of staining in the mossy fiber terminal region (MF). B. Staining in mouse cerebellum shows labeling of the basket shape (arrows) under Purkinje cells (P) and diffused staining in the molecular layer (MOL). Cell nuclei are stained with DAPI (blue).



Western Blotting

Image 3. Western blot analysis of rat (lanes 1 and 3) and mouse (lanes 2 and 4) brain membranes: - 1,2. Anti-Alpha 2 Na⁺/K⁺ ATPase Antibody (ABIN7042961, ABIN7044639 and ABIN7044640), (1:200).3,4. Anti-Alpha 2 Na⁺/K⁺ ATPase Antibody, preincubated with Alpha 2 Na⁺/K⁺ ATPase Blocking Peptide (#BLP-NP002).