

Datasheet for ABIN7042962

anti-ATP1A3 antibody (Intracellular, N-Term)

3 Images

[Go to Product page](#)

Overview

Quantity:	50 µL
Target:	ATP1A3
Binding Specificity:	AA 3-15, Intracellular, N-Term
Reactivity:	Human, Mouse, Rat
Host:	Rabbit
Clonality:	Polyclonal
Application:	Western Blotting (WB), Immunofluorescence (IF), Immunohistochemistry (IHC)

Product Details

Immunogen:	Immunogen: Synthetic peptide Immunogen Sequence: (C)DKKDDKSSPKKSK, corresponding to amino acid residues 3-15 of rat ATP1A3
Isotype:	IgG
Characteristics:	Anti-Alpha 3 Na ⁺ /K ⁺ ATPase Antibody (ABIN7042962, ABIN7044641 and ABIN7044642)) is a highly specific antibody directed against an epitope of the rat ATP1A3. The antibody can be used in western blot and immunohistochemistry applications. It has been designed to recognize ATP1A3 from rat, mouse, and human samples.
Purification:	Affinity purified on immobilized antigen.

Target Details

Target:	ATP1A3
---------	--------

Target Details

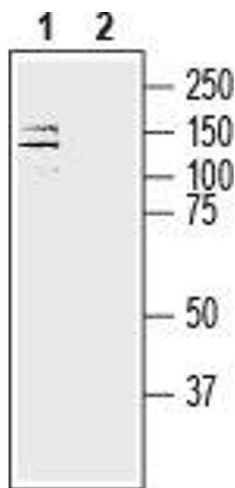
Alternative Name:	Alpha 3 Na ⁺ /K ⁺ ATPase (ATP1A3 Products)
Background:	Alternative names: Alpha 3 Na ⁺ /K ⁺ ATPase, ATP1A3, Sodium/potassium ATPase catalytic subunit alpha-3, Sodium pump subunit alpha-3, Na ⁺ /K ⁺ -transporting ATPase subunit alpha-3
Gene ID:	24213
NCBI Accession:	NM_152296
UniProt:	P06687
Pathways:	Thyroid Hormone Synthesis , Proton Transport , Ribonucleoside Biosynthetic Process

Application Details

Application Notes:	Optimal working dilution should be determined by the investigator.
Restrictions:	For Research Use only

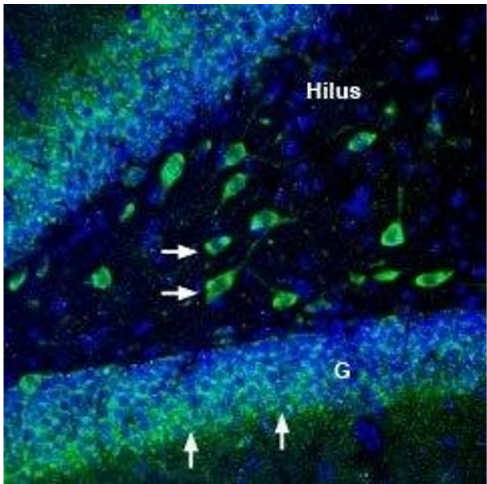
Handling

Format:	Lyophilized
Reconstitution:	25 µL, 50 µL or 0.2 mL double distilled water (DDW), depending on the sample size.
Concentration:	0.8 mg/mL
Buffer:	Reconstituted antibody contains phosphate buffered saline (PBS), pH 7.4, 1 % BSA, 0.05 % Sodium azide.
Preservative:	Sodium azide
Precaution of Use:	This product contains Sodium azide: a POISONOUS AND HAZARDOUS SUBSTANCE which should be handled by trained staff only.
Storage:	RT, 4 °C, -20 °C
Storage Comment:	<p>Storage before reconstitution: The antibody ships as a lyophilized powder at room temperature. Upon arrival, it should be stored at -20°C.</p> <p>Storage after reconstitution: The reconstituted solution can be stored at 4°C for up to 1 week. For longer periods, small aliquots should be stored at -20°C. Avoid multiple freezing and thawing. Centrifuge all antibody preparations before use (10000 x g 5 min).</p>



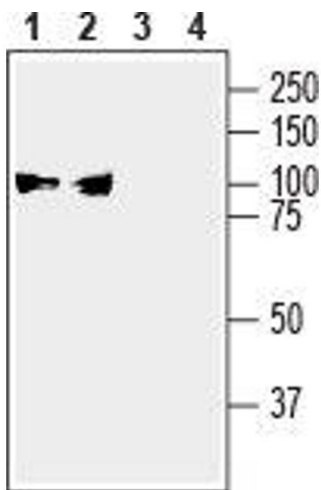
Western Blotting

Image 1. Western blot analysis of human SH-SY5Y neuroblastoma cell line lysate: - 1. Anti-Alpha 3 Na⁺/K⁺ ATPase Antibody (ABIN7042962, ABIN7044641 and ABIN7044642), (1:200).2. Anti-Alpha 3 Na⁺/K⁺ ATPase Antibody, preincubated with Alpha 3 Na⁺/K⁺ ATPase Blocking Peptide (#BLP-NP003).



Immunohistochemistry

Image 2. Expression of Na⁺/K⁺ ATPase α 3 (ATP1A3) in rat hippocampus - Immunohistochemical staining of perfusion-fixed frozen rat brain sections with Anti-Alpha 3 Na⁺/K⁺ ATPase Antibody (ABIN7042962, ABIN7044641 and ABIN7044642), (1:200), followed by goat-anti-rabbit-AlexaFluor-488. ATP1A3 staining (green) in the hippocampal dentate gyrus is detected in the granule layer (G), (vertical arrows) and in hilar interneurons (horizontal arrows). Cell nuclei are stained with DAPI (blue).



Western Blotting

Image 3. Western blot analysis of mouse (lanes 1 and 3) and rat (lanes 2 and 4) brain membranes: - 1,2. Anti-Alpha 3 Na⁺/K⁺ ATPase Antibody (ABIN7042962, ABIN7044641 and ABIN7044642), (1:200).3,4. Anti-Alpha 3 Na⁺/K⁺ ATPase Antibody, preincubated with Alpha 3 Na⁺/K⁺ ATPase Blocking Peptide (#BLP-NP003).