



[Go to Product page](#)

Datasheet for ABIN7042963

anti-ATP1B3 antibody (C-Term, Extracellular)

4 Images

Overview

| | |
|----------------------|--|
| Quantity: | 0.2 mL |
| Target: | ATP1B3 |
| Binding Specificity: | AA 66-80, C-Term, Extracellular |
| Reactivity: | Human, Rat, Mouse |
| Host: | Rabbit |
| Clonality: | Polyclonal |
| Conjugate: | This ATP1B3 antibody is un-conjugated |
| Application: | Western Blotting (WB), Flow Cytometry (FACS) |

Product Details

| | |
|------------------|--|
| Immunogen: | Immunogen: Synthetic peptide Immunogen Sequence: Peptide (C)NDEVPKYRDQIPSPG, corresponding to amino acid residues 66 - 80 of human Beta 3 Na ⁺ /K ⁺ ATPase |
| Isotype: | IgG |
| Characteristics: | Anti-ATP1B3 (extracellular) Antibody (ABIN7042963, ABIN7044645 and ABIN7044646)) is a highly specific antibody directed against an epitope of the rat protein. The antibody can be used in western blot analysis. It has been designed to recognize ATP1B3 from rat, mouse, and human samples. |
| Purification: | Affinity purified on immobilized antigen. |

Target Details

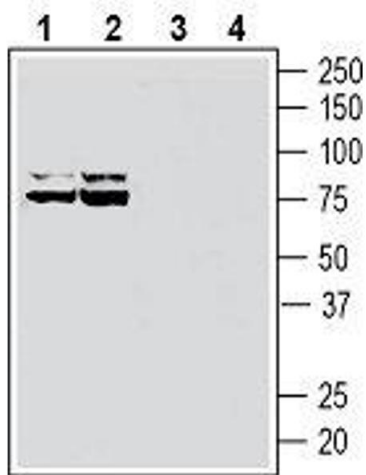
| | |
|-------------------|--|
| Target: | ATP1B3 |
| Alternative Name: | ATP1B3 (ATP1B3 Products) |
| Background: | Alternative names: Sodium/Potassium-Transporting ATPase Subunit Beta-3, CD298, Beta 3 Na ⁺ /K ⁺ ATPase, ATP1B3 |
| Gene ID: | 483 |
| NCBI Accession: | NM_001679 |
| UniProt: | P54709 |
| Pathways: | Thyroid Hormone Synthesis |

Application Details

| | |
|--------------------|--|
| Application Notes: | Optimal working dilution should be determined by the investigator. |
| Restrictions: | For Research Use only |

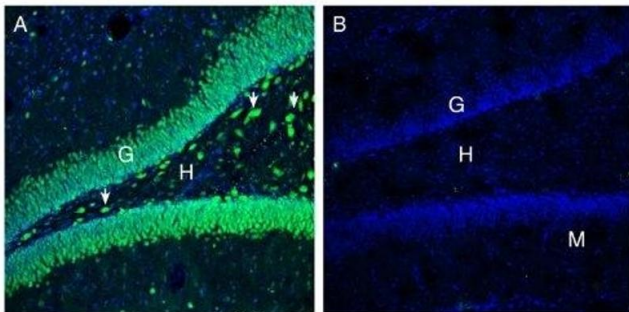
Handling

| | |
|--------------------|---|
| Format: | Lyophilized |
| Reconstitution: | 25 µL, 50 µL or 0.2 mL double distilled water (DDW), depending on the sample size. |
| Concentration: | 0.8 mg/mL |
| Buffer: | Reconstituted antibody contains phosphate buffered saline (PBS), pH 7.4, 1 % BSA, 0.05 % Sodium azide. |
| Preservative: | Sodium azide |
| Precaution of Use: | This product contains Sodium azide: a POISONOUS AND HAZARDOUS SUBSTANCE which should be handled by trained staff only. |
| Storage: | RT, 4 °C, -20 °C |
| Storage Comment: | Storage before reconstitution: The antibody ships as a lyophilized powder at room temperature. Upon arrival, it should be stored at -20°C. Storage after reconstitution: The reconstituted solution can be stored at 4°C for up to 1 week. For longer periods, small aliquots should be stored at -20°C. Avoid multiple freezing and thawing. Centrifuge all antibody preparations before use (10000 x g 5 min). |



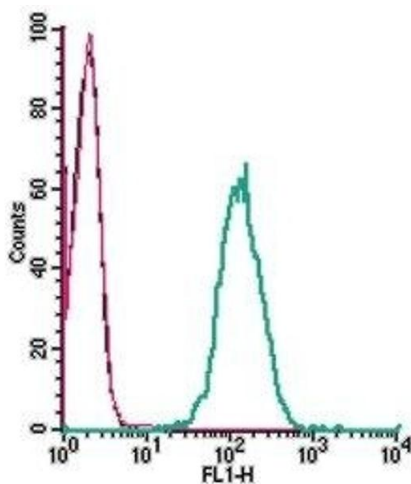
Western Blotting

Image 1. Western blot analysis of rat brain lysates (lanes 1 and 3) and mouse brain lysates (lanes 2 and 4): - 1, 2. Anti-ATP1B3 (extracellular) Antibody (ABIN7042963, ABIN7044645 and ABIN7044646), (1:200). 3, 4. Anti-ATP1B3 (extracellular) Antibody, preincubated with ATP1B3 (extracellular) Blocking Peptide (#BLP-NT013)



Immunohistochemistry

Image 2. Expression of ATP1B3 in rat hippocampus. - Immunohistochemical staining of perfusion-fixed frozen rat brain sections with Anti-ATP1B3 (extracellular) Antibody (ABIN7042963, ABIN7044645 and ABIN7044646), followed by goat anti-rabbit-AlexaFluor-488. A. Staining in the in rat hippocampal dentate gyrus region, revealed immunoreactivity (green) in neurons of the hilus (H, arrows) and the granule layer (G). B. Pre-incubation of the antibody with ATP1B3 (extracellular) Blocking Peptide (BLP-NP013), suppressed staining. Cell nuclei are stained with DAPI (blue).



Flow Cytometry

Image 3. Cell surface detection of ATP1B3 in live intact human THP-1 monocytic leukemia cells: (black line) Cells.(red line) Cells + goat-anti-rabbit-FITC.(green line) Cells + Anti-ATP1B3 (extracellular) Antibody (ABIN7042963, ABIN7044645 and ABIN7044646), (2.5 µg) + goat-anti-rabbit-FITC.

Please check the [product details page](#) for more images. Overall 4 images are available for ABIN7042963.